

The REG Procedure
Model: MODEL1
Dependent Variable: price

Number of Observations Read	59
Number of Observations Used	58
Number of Observations with Missing Values	1

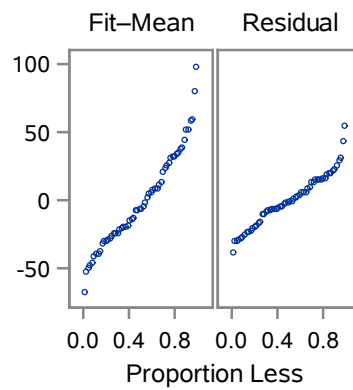
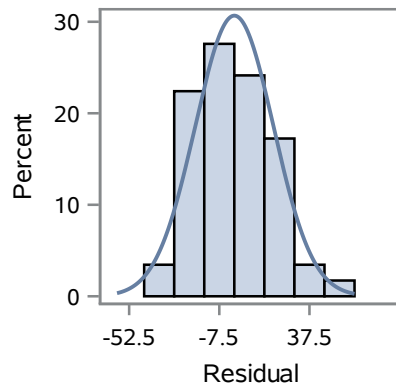
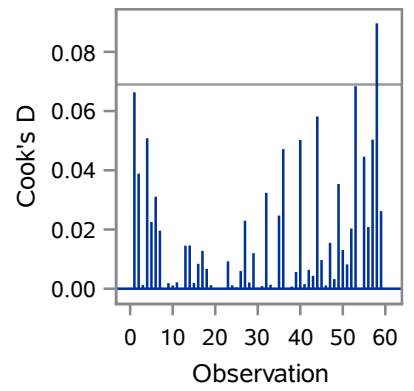
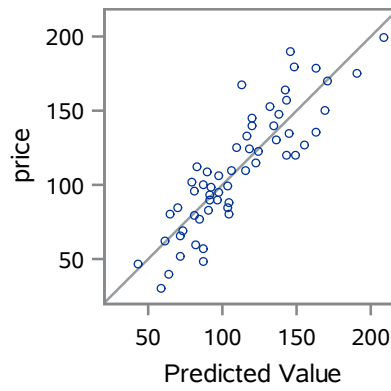
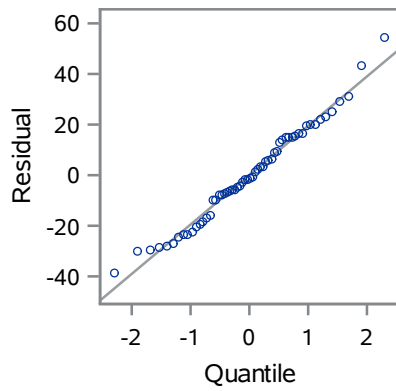
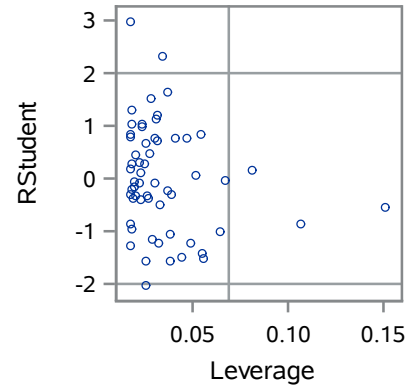
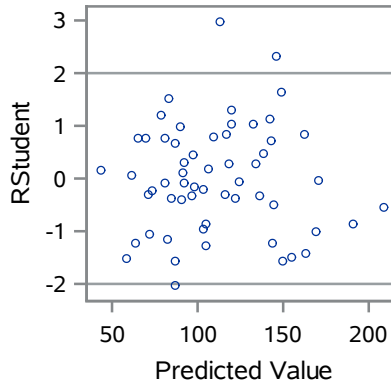
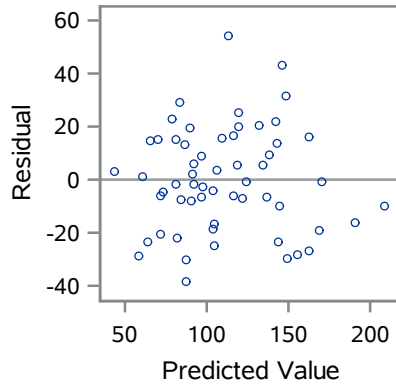
Analysis of Variance					
Source	DF	Sum of Squares	Mean Square	F Value	Pr > F
Model	1	71534	71534	184.62	<.0001
Error	56	21698	387.46904		
Corrected Total	57	93232			

Root MSE	19.68423	R-Square	0.7673
Dependent Mean	111.03445	Adj R-Sq	0.7631
Coeff Var	17.72804		

Parameter Estimates							
Variable	DF	Parameter Estimate	Standard Error	t Value	Pr > t	95% Confidence Limits	
Intercept	1	5.43157	8.19061	0.66	0.5100	-10.97619	21.83933
size	1	56.08328	4.12758	13.59	<.0001	47.81473	64.35183

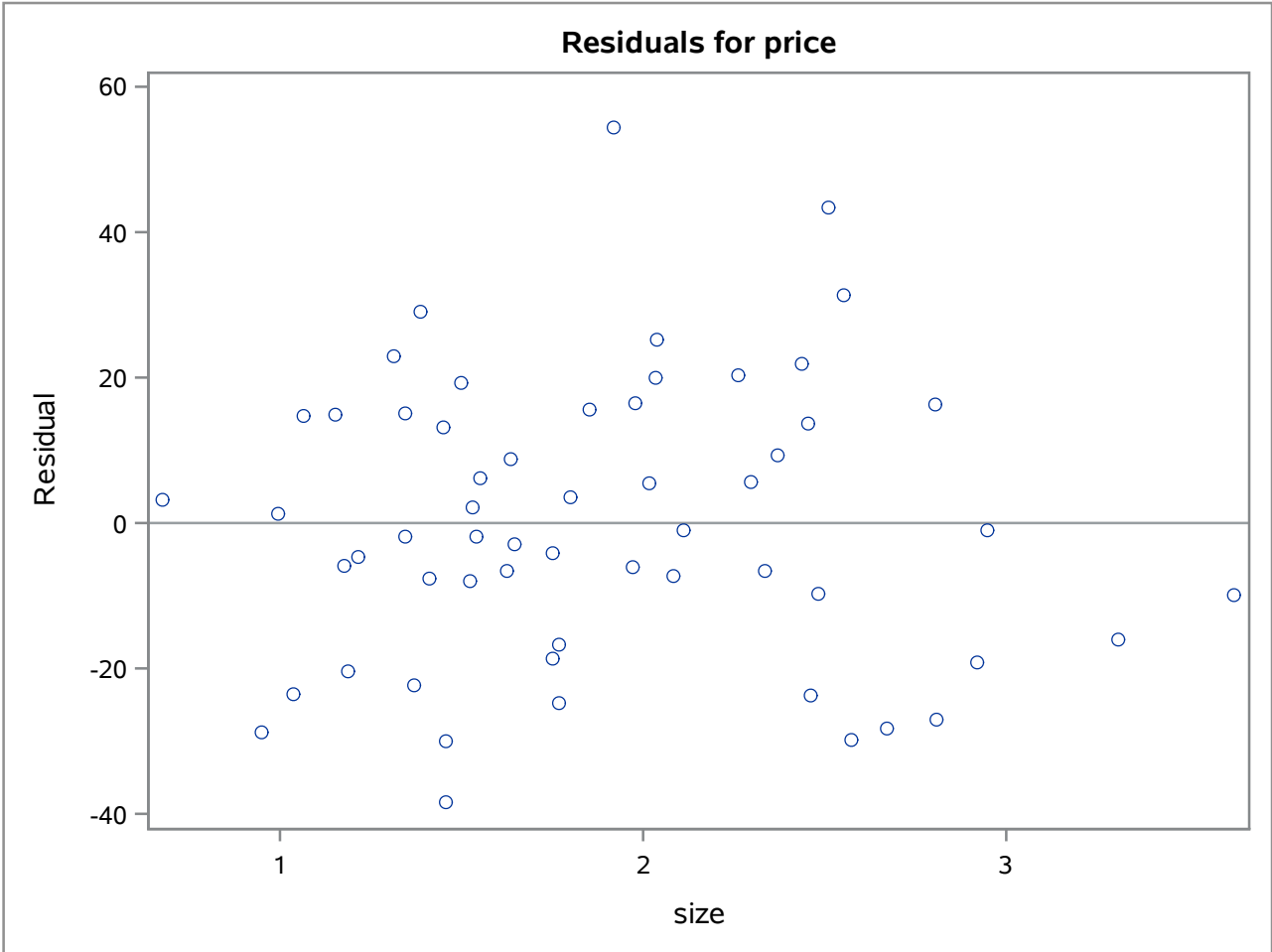
The REG Procedure
Model: MODEL1
Dependent Variable: price

Fit Diagnostics for price

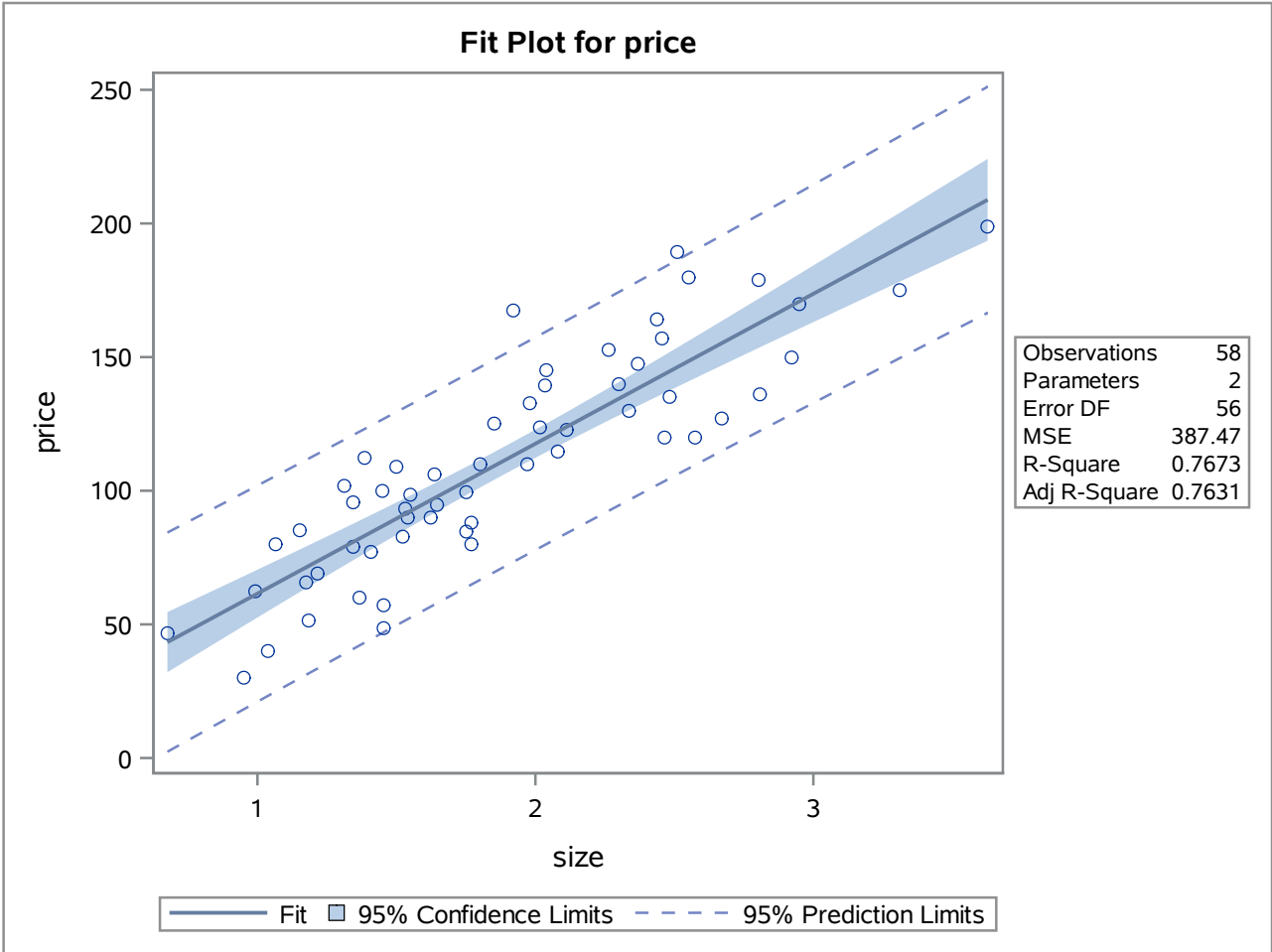


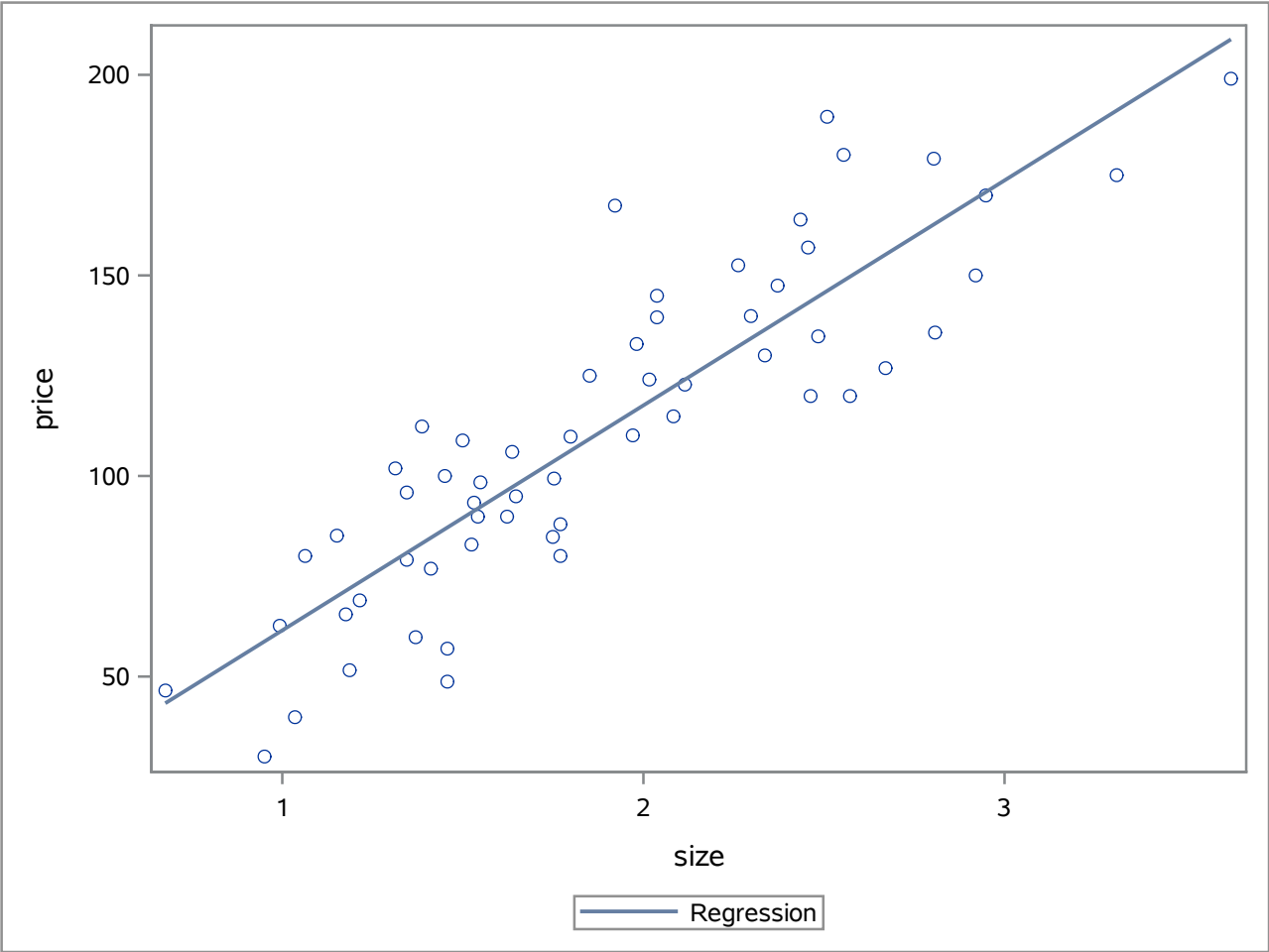
Observations	58
Parameters	2
Error DF	56
MSE	387.47
R-Square	0.7673
Adj R-Square	0.7631

The REG Procedure
Model: MODEL1
Dependent Variable: price



The REG Procedure
Model: MODEL1
Dependent Variable: price





The REG Procedure
Model: MODEL1
Dependent Variable: price

Number of Observations Read	60
Number of Observations Used	58
Number of Observations with Missing Values	2

Analysis of Variance					
Source	DF	Sum of Squares	Mean Square	F Value	Pr > F
Model	1	71534	71534	184.62	<.0001
Error	56	21698	387.46904		
Corrected Total	57	93232			

Root MSE	19.68423	R-Square	0.7673
Dependent Mean	111.03445	Adj R-Sq	0.7631
Coeff Var	17.72804		

Parameter Estimates					
Variable	DF	Parameter Estimate	Standard Error	t Value	Pr > t
Intercept	1	5.43157	8.19061	0.66	0.5100
size	1	56.08328	4.12758	13.59	<.0001

The REG Procedure
Model: MODEL1
Dependent Variable: price

Output Statistics								
Obs	Dependent Variable	Predicted Value	Std Error Mean Predict	95% CL Mean		95% CL Predict		Residual
1	30.0	58.7668	4.6344	49.4828	68.0507	18.2563	99.2772	-28.7668
2	39.9	63.5338	4.3476	54.8245	72.2432	23.1512	103.9165	-23.6338
3	46.5	43.3439	5.6124	32.1008	54.5869	2.3401	84.3476	3.1561
4	48.6	87.0888	3.1283	80.8221	93.3556	47.1617	127.0159	-38.4888
5	51.5	71.9463	3.8673	64.1991	79.6936	31.7602	112.1324	-20.4463
6	57.0	87.0888	3.1283	80.8221	93.3556	47.1617	127.0159	-30.0988
7	59.9	82.1535	3.3464	75.4498	88.8572	42.1555	122.1515	-22.2535
8	62.5	61.1783	4.4882	52.1874	70.1693	20.7341	101.6226	1.3217
9	65.5	71.3855	3.8982	63.5766	79.1944	31.1875	111.5835	-5.8855
10	69.0	73.6288	3.7761	66.0643	81.1934	33.4776	113.7801	-4.6288
11	76.9	84.5090	3.2391	78.0203	90.9976	44.5464	124.4715	-7.6090
12	79.0	80.8075	3.4102	73.9760	87.6389	40.7879	120.8271	-1.8075
13	79.9	65.1042	4.2553	56.5799	73.6285	24.7611	105.4473	14.7958
14	80.0	104.6990	2.6264	99.4377	109.9603	64.9173	144.4807	-24.7490
15	82.9	90.9025	2.9792	84.9344	96.8706	51.0211	130.7838	-8.0025
16	84.9	103.5773	2.6423	98.2842	108.8705	63.7914	143.3632	-18.6773
17	85.0	70.0395	3.9728	62.0809	77.9981	29.8121	110.2669	14.9605
18	87.9	104.6990	2.6264	99.4377	109.9603	64.9173	144.4807	-16.7990
19	89.9	96.5108	2.7970	90.9078	102.1138	56.6825	136.3392	-6.6108
20	89.9	91.7998	2.9469	85.8964	97.7033	51.9281	131.6715	-1.8998
21	93.5	91.3512	2.9629	85.4157	97.2866	51.4747	131.2276	2.1488
22	94.9	97.8007	2.7621	92.2676	103.3338	57.9822	137.6193	-2.9007
23	95.8	80.8075	3.4102	73.9760	87.6389	40.7879	120.8271	14.9925
24	98.5	92.3607	2.9273	86.4965	98.2248	52.4947	132.2266	6.1393
25	99.5	103.6895	2.6406	98.3997	108.9792	63.9040	143.4750	-4.1895
26	99.9	86.7523	3.1423	80.4575	93.0472	46.8208	126.6839	13.1477
27	102.0	79.0128	3.4978	72.0059	86.0198	38.9629	119.0628	22.9872
28	106.0	97.1838	2.7784	91.6180	102.7497	57.3607	137.0069	8.8162
29	108.9	89.5565	3.0297	83.4872	95.6257	49.6599	129.4531	19.3435
30	109.9	106.3815	2.6073	101.1585	111.6044	66.6048	146.1581	3.5185
31	110.0	116.0278	2.6107	110.7980	121.2576	76.2502	155.8053	-6.0278
32	112.3	83.2191	3.2972	76.6141	89.8241	43.2375	123.2007	29.0709
33	114.9	122.1970	2.7121	116.7640	127.6299	82.3922	162.0017	-7.2970

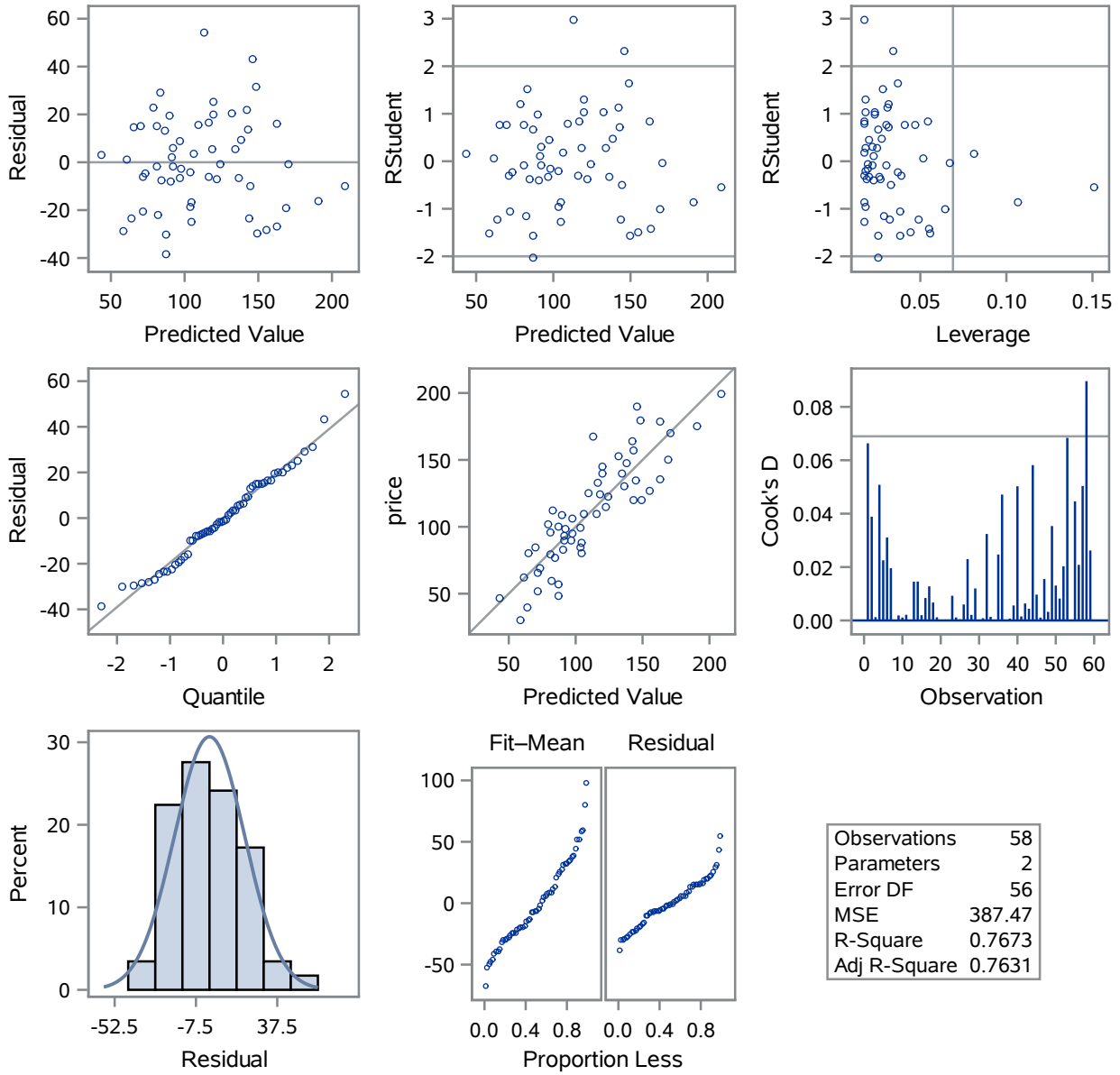
The REG Procedure
Model: MODEL1
Dependent Variable: price

Output Statistics								
Obs	Dependent Variable	Predicted Value	Std Error Mean Predict	95% CL Mean		95% CL Predict		Residual
34	119.5
35	119.9	143.5647	3.5231	136.5070	150.6224	103.5058	183.6236	-23.6647
36	119.9	149.6778	3.8431	141.9792	157.3763	109.5010	189.8545	-29.7778
37	122.9	123.9355	2.7535	118.4195	129.4516	84.1193	163.7517	-1.0355
38	123.9	118.4955	2.6424	113.2022	123.7887	78.7095	158.2814	5.4425
39	124.9	109.2978	2.5878	104.1138	114.4818	69.5262	149.0694	15.6022
40	126.9	155.1739	4.1513	146.8578	163.4900	114.8743	195.4736	-28.2739
41	129.9	136.4421	3.1902	130.0514	142.8328	96.4953	176.3889	-6.5421
42	132.9	116.4765	2.6155	111.2370	121.7160	76.6976	156.2553	16.4235
43	134.9	144.6863	3.5797	137.5153	151.8574	104.6073	184.7654	-9.7863
44	135.9	162.9695	4.6141	153.7262	172.2127	122.4684	203.4706	-27.0695
45	139.5	119.6171	2.6607	114.2870	124.9472	79.8263	159.4080	19.8829
46	140.0	134.3109	3.1008	128.0992	140.5227	94.3924	174.2295	5.6791
47	144.9	119.7293	2.6627	114.3953	125.0633	79.9379	159.5207	25.1707
48	147.6	138.3489	3.2744	131.7895	144.9084	98.3748	178.3230	9.2511
49	150.0	169.2508	5.0038	159.2270	179.2747	128.5645	209.9372	-19.2608
50	152.6	132.2919	3.0213	126.2396	138.3443	92.3979	172.1860	20.2581
51	156.9	143.1721	3.5036	136.1536	150.1906	103.1201	183.2241	13.7279
52	164.0	142.0504	3.4484	135.1425	148.9583	102.0177	182.0832	21.9496
53	167.5	113.1115	2.5892	107.9247	118.2982	73.3395	152.8834	54.3885
54	169.9	170.8212	5.1031	160.5984	181.0439	130.0853	211.5570	-0.9212
55	175.0	191.0672	6.4323	178.1817	203.9528	149.5830	232.5514	-16.0672
56	179.0	162.7452	4.6005	153.5293	171.9610	122.2503	203.2400	16.2548
57	179.9	148.6122	3.7854	141.0291	156.1952	108.4574	188.7669	31.2878
58	189.5	146.2006	3.6577	138.8733	153.5279	106.0933	186.3079	43.2994
59	199.0	208.8456	7.6486	193.5236	224.1676	166.5412	251.1501	-9.8456
60	.	103.5773	2.6423	98.2842	108.8705	63.7914	143.3632	.

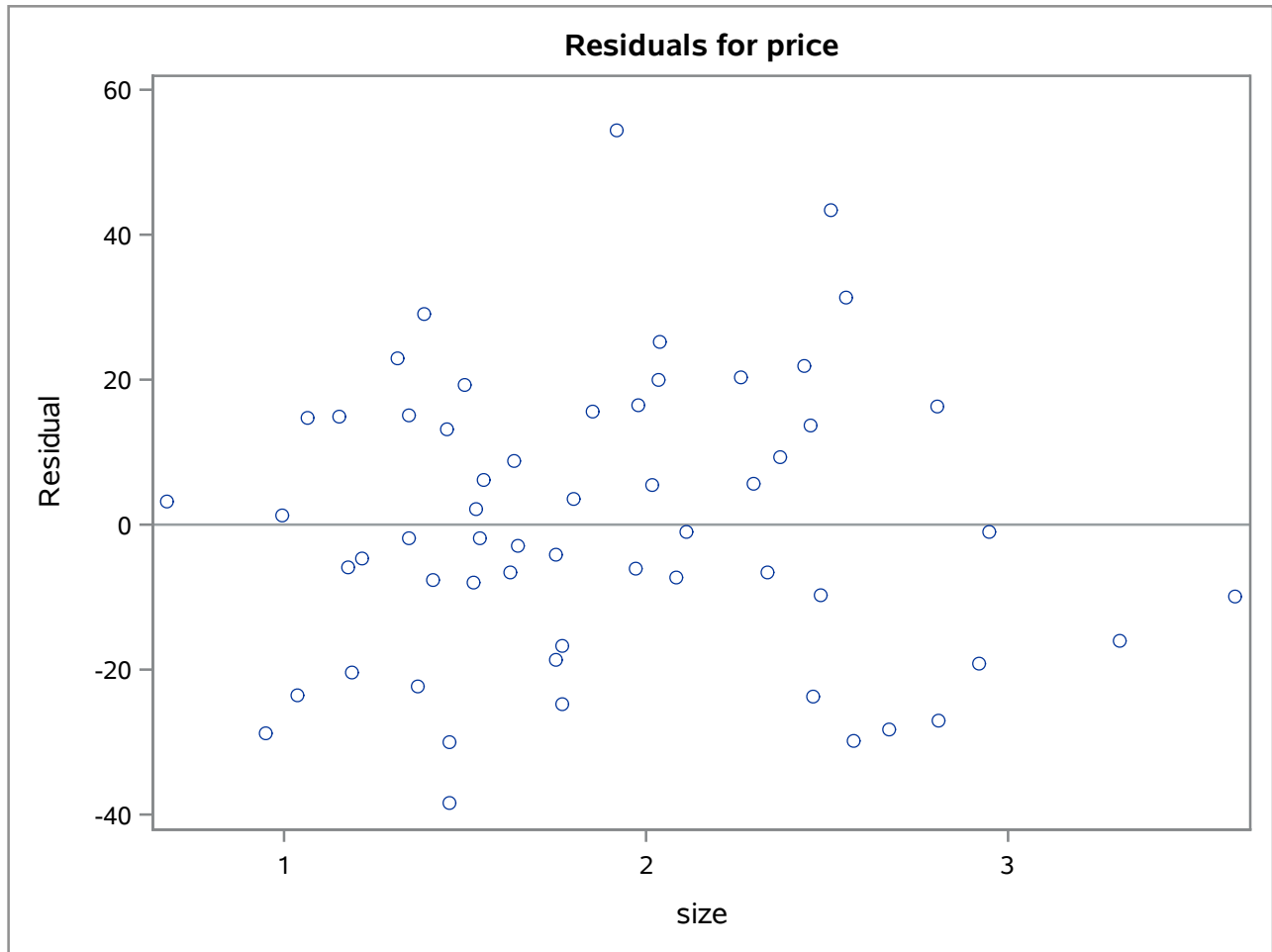
Sum of Residuals	0
Sum of Squared Residuals	21698
Predicted Residual SS (PRESS)	23201

The REG Procedure
Model: MODEL1

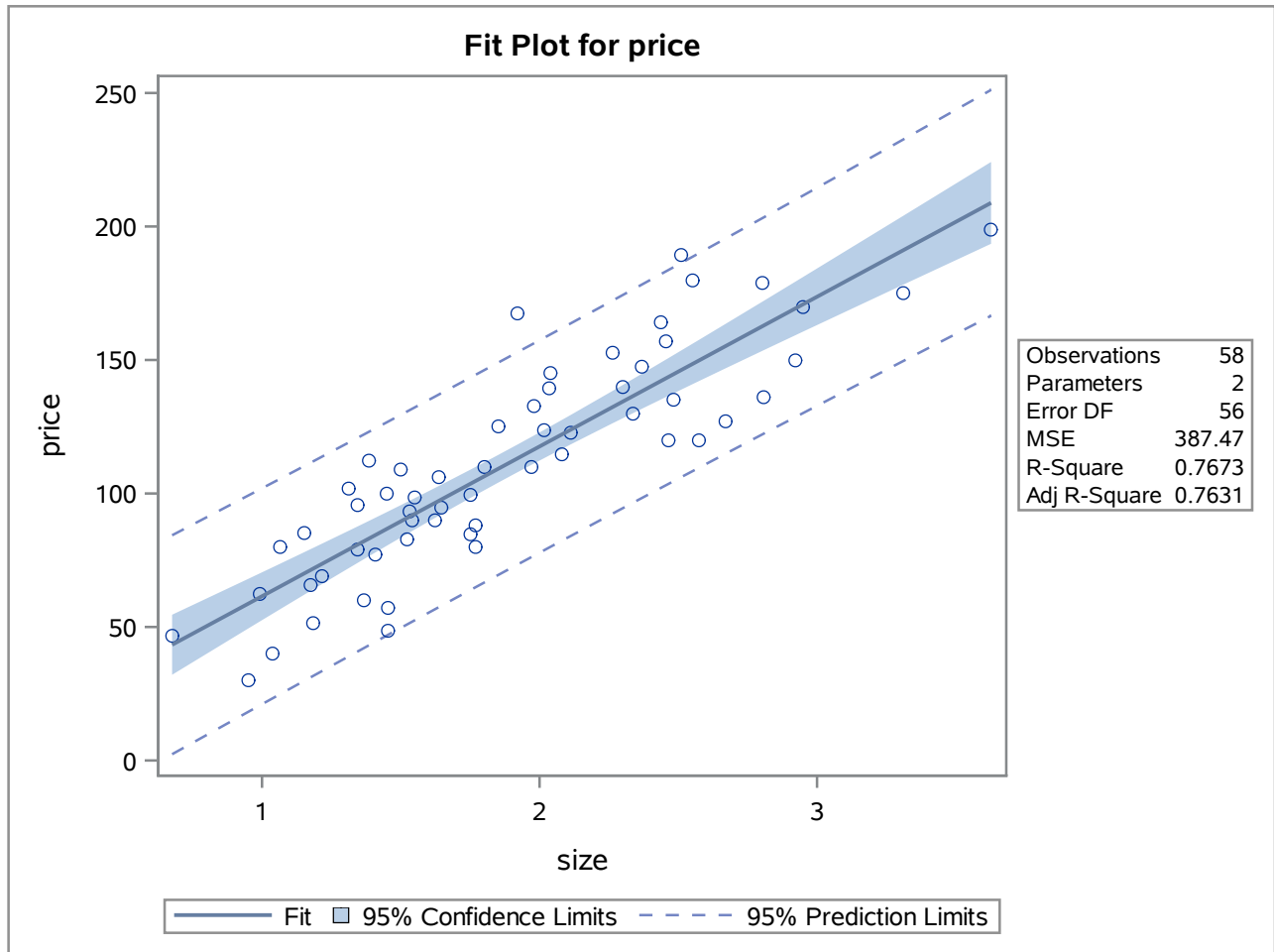
Fit Diagnostics for price



The REG Procedure
Model: MODEL1



The REG Procedure
 Model: MODEL1



The CORR Procedure

2 Variables:	price size
---------------------	------------

Simple Statistics						
Variable	N	Mean	Std Dev	Sum	Minimum	Maximum
price	59	111.17793	40.10817	6559	30.00000	199.00000
size	59	1.88071	0.62643	110.96200	0.67600	3.62700

Pearson Correlation Coefficients		
Prob > r under H0: Rho=0		
Number of Observations		
	price	size
price	1.00000 59	0.87594 <.0001 58
size	0.87594 <.0001 58	1.00000 59

The REG Procedure
Model: MODEL1
Dependent Variable: price

Number of Observations Read	60
Number of Observations Used	58
Number of Observations with Missing Values	2

Analysis of Variance					
Source	DF	Sum of Squares	Mean Square	F Value	Pr > F
Model	1	71534	71534	184.62	<.0001
Error	56	21698	387.46904		
Corrected Total	57	93232			

Root MSE	19.68423	R-Square	0.7673
Dependent Mean	111.03445	Adj R-Sq	0.7631
Coeff Var	17.72804		

Parameter Estimates					
Variable	DF	Parameter Estimate	Standard Error	t Value	Pr > t
Intercept	1	5.43157	8.19061	0.66	0.5100
size	1	56.08328	4.12758	13.59	<.0001

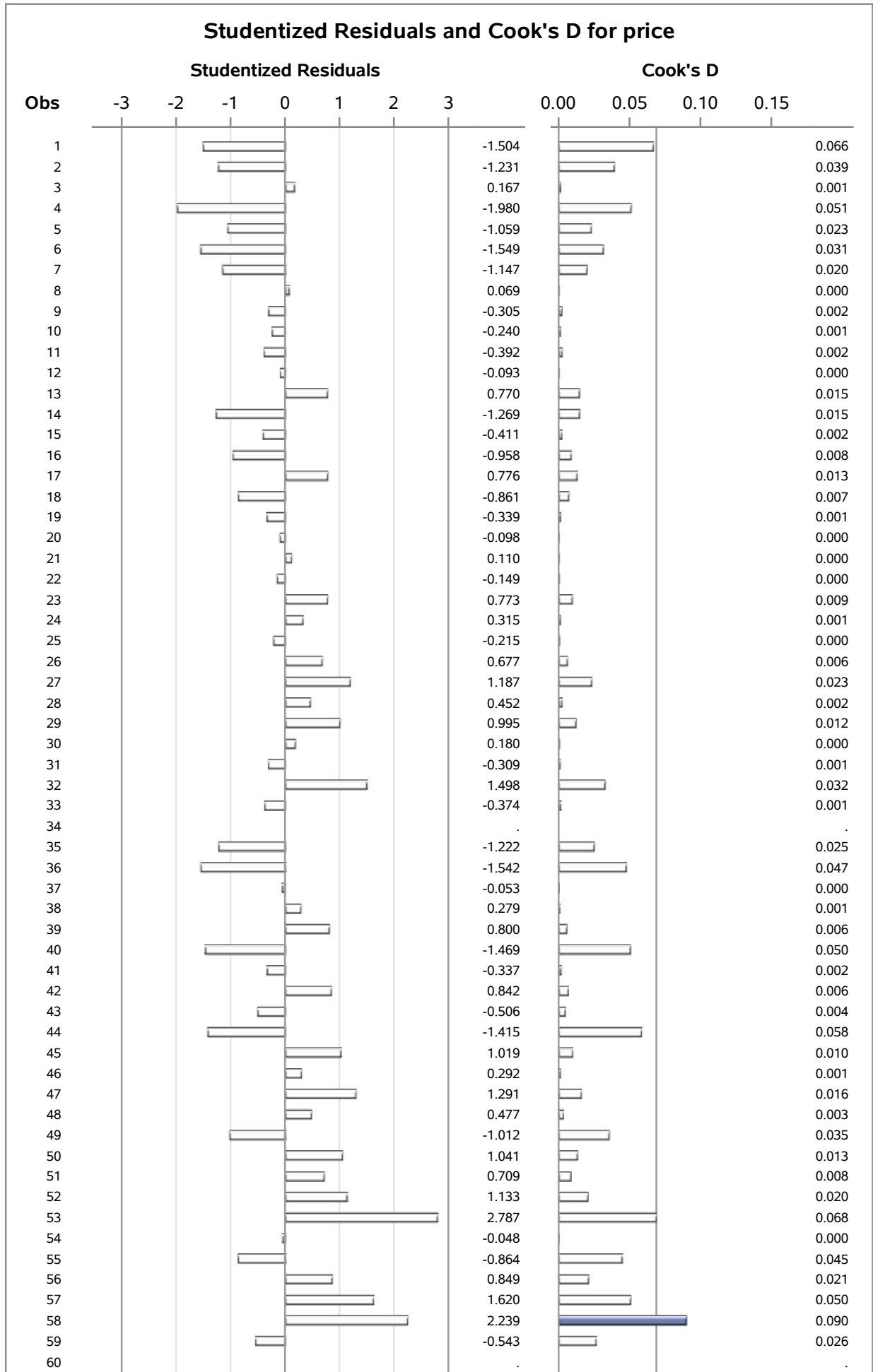
The REG Procedure
Model: MODEL1
Dependent Variable: price

Output Statistics							
Obs	Dependent Variable	Predicted Value	Std Error Mean Predict	Residual	Std Error Residual	Student Residual	Cook's D
1	30.0	58.7668	4.6344	-28.7668	19.131	-1.504	0.066
2	39.9	63.5338	4.3476	-23.6338	19.198	-1.231	0.039
3	46.5	43.3439	5.6124	3.1561	18.867	0.167	0.001
4	48.6	87.0888	3.1283	-38.4888	19.434	-1.980	0.051
5	51.5	71.9463	3.8673	-20.4463	19.301	-1.059	0.023
6	57.0	87.0888	3.1283	-30.0988	19.434	-1.549	0.031
7	59.9	82.1535	3.3464	-22.2535	19.398	-1.147	0.020
8	62.5	61.1783	4.4882	1.3217	19.166	0.069	0.000
9	65.5	71.3855	3.8982	-5.8855	19.294	-0.305	0.002
10	69.0	73.6288	3.7761	-4.6288	19.319	-0.240	0.001
11	76.9	84.5090	3.2391	-7.6090	19.416	-0.392	0.002
12	79.0	80.8075	3.4102	-1.8075	19.387	-0.093	0.000
13	79.9	65.1042	4.2553	14.7958	19.219	0.770	0.015
14	80.0	104.6990	2.6264	-24.7490	19.508	-1.269	0.015
15	82.9	90.9025	2.9792	-8.0025	19.457	-0.411	0.002
16	84.9	103.5773	2.6423	-18.6773	19.506	-0.958	0.008
17	85.0	70.0395	3.9728	14.9605	19.279	0.776	0.013
18	87.9	104.6990	2.6264	-16.7990	19.508	-0.861	0.007
19	89.9	96.5108	2.7970	-6.6108	19.485	-0.339	0.001
20	89.9	91.7998	2.9469	-1.8998	19.462	-0.098	0.000
21	93.5	91.3512	2.9629	2.1488	19.460	0.110	0.000
22	94.9	97.8007	2.7621	-2.9007	19.489	-0.149	0.000
23	95.8	80.8075	3.4102	14.9925	19.387	0.773	0.009
24	98.5	92.3607	2.9273	6.1393	19.465	0.315	0.001
25	99.5	103.6895	2.6406	-4.1895	19.506	-0.215	0.000
26	99.9	86.7523	3.1423	13.1477	19.432	0.677	0.006
27	102.0	79.0128	3.4978	22.9872	19.371	1.187	0.023
28	106.0	97.1838	2.7784	8.8162	19.487	0.452	0.002
29	108.9	89.5565	3.0297	19.3435	19.450	0.995	0.012
30	109.9	106.3815	2.6073	3.5185	19.511	0.180	0.000
31	110.0	116.0278	2.6107	-6.0278	19.510	-0.309	0.001
32	112.3	83.2191	3.2972	29.0709	19.406	1.498	0.032
33	114.9	122.1970	2.7121	-7.2970	19.497	-0.374	0.001

The REG Procedure
Model: MODEL1
Dependent Variable: price

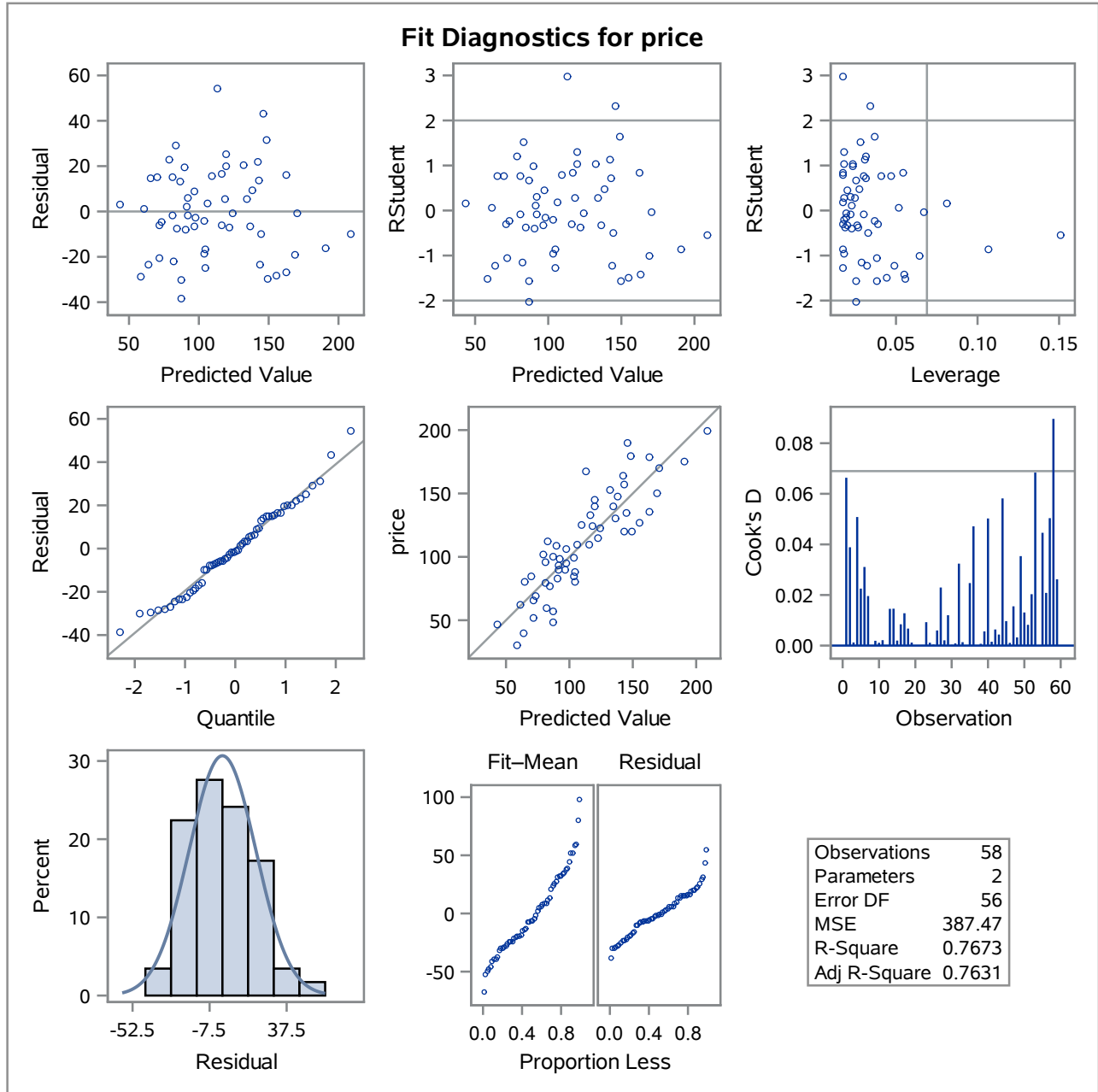
Output Statistics							
Obs	Dependent Variable	Predicted Value	Std Error Mean Predict	Residual	Std Error Residual	Student Residual	Cook's D
34	119.5
35	119.9	143.5647	3.5231	-23.6647	19.366	-1.222	0.025
36	119.9	149.6778	3.8431	-29.7778	19.305	-1.542	0.047
37	122.9	123.9355	2.7535	-1.0355	19.491	-0.053	0.000
38	123.9	118.4955	2.6424	5.4425	19.506	0.279	0.001
39	124.9	109.2978	2.5878	15.6022	19.513	0.800	0.006
40	126.9	155.1739	4.1513	-28.2739	19.242	-1.469	0.050
41	129.9	136.4421	3.1902	-6.5421	19.424	-0.337	0.002
42	132.9	116.4765	2.6155	16.4235	19.510	0.842	0.006
43	134.9	144.6863	3.5797	-9.7863	19.356	-0.506	0.004
44	135.9	162.9695	4.6141	-27.0695	19.136	-1.415	0.058
45	139.5	119.6171	2.6607	19.8829	19.504	1.019	0.010
46	140.0	134.3109	3.1008	5.6791	19.438	0.292	0.001
47	144.9	119.7293	2.6627	25.1707	19.503	1.291	0.016
48	147.6	138.3489	3.2744	9.2511	19.410	0.477	0.003
49	150.0	169.2508	5.0038	-19.2608	19.038	-1.012	0.035
50	152.6	132.2919	3.0213	20.2581	19.451	1.041	0.013
51	156.9	143.1721	3.5036	13.7279	19.370	0.709	0.008
52	164.0	142.0504	3.4484	21.9496	19.380	1.133	0.020
53	167.5	113.1115	2.5892	54.3885	19.513	2.787	0.068
54	169.9	170.8212	5.1031	-0.9212	19.011	-0.048	0.000
55	175.0	191.0672	6.4323	-16.0672	18.604	-0.864	0.045
56	179.0	162.7452	4.6005	16.2548	19.139	0.849	0.021
57	179.9	148.6122	3.7854	31.2878	19.317	1.620	0.050
58	189.5	146.2006	3.6577	43.2994	19.341	2.239	0.090
59	199.0	208.8456	7.6486	-9.8456	18.137	-0.543	0.026
60	.	103.5773	2.6423

The REG Procedure
Model: MODEL1
Dependent Variable: price

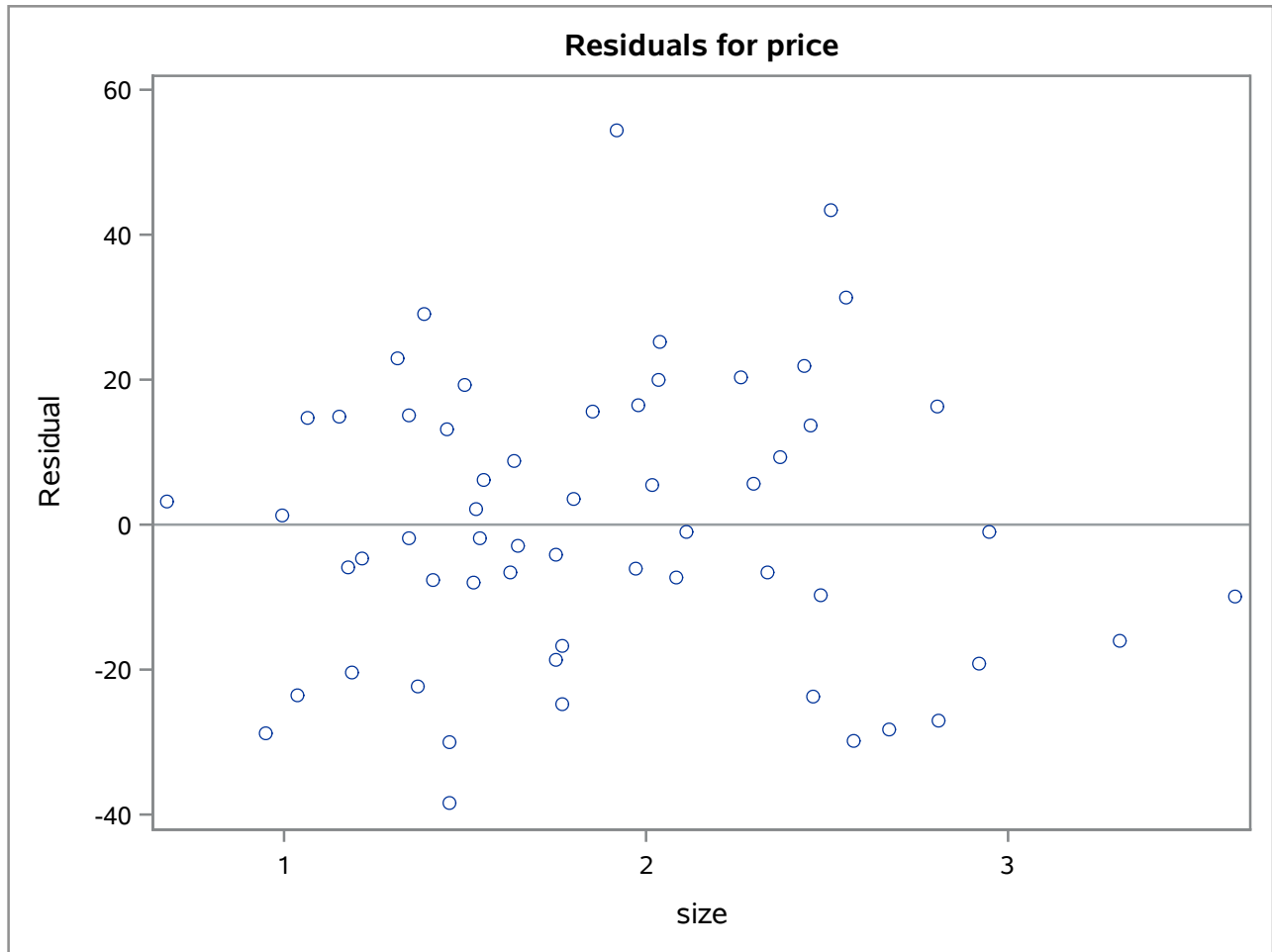


The REG Procedure
 Model: MODEL1
 Dependent Variable: price

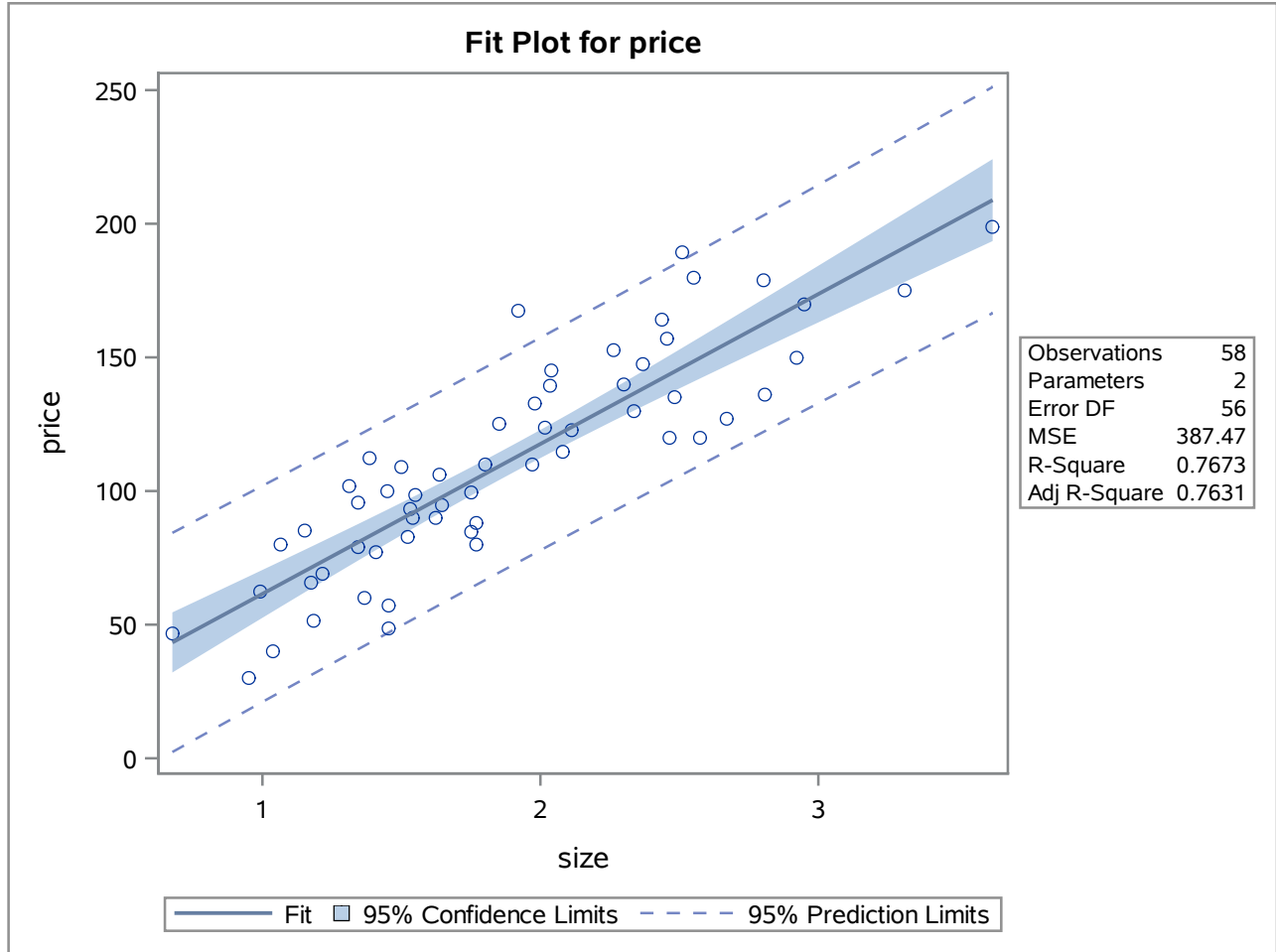
Sum of Residuals	0
Sum of Squared Residuals	21698
Predicted Residual SS (PRESS)	23201

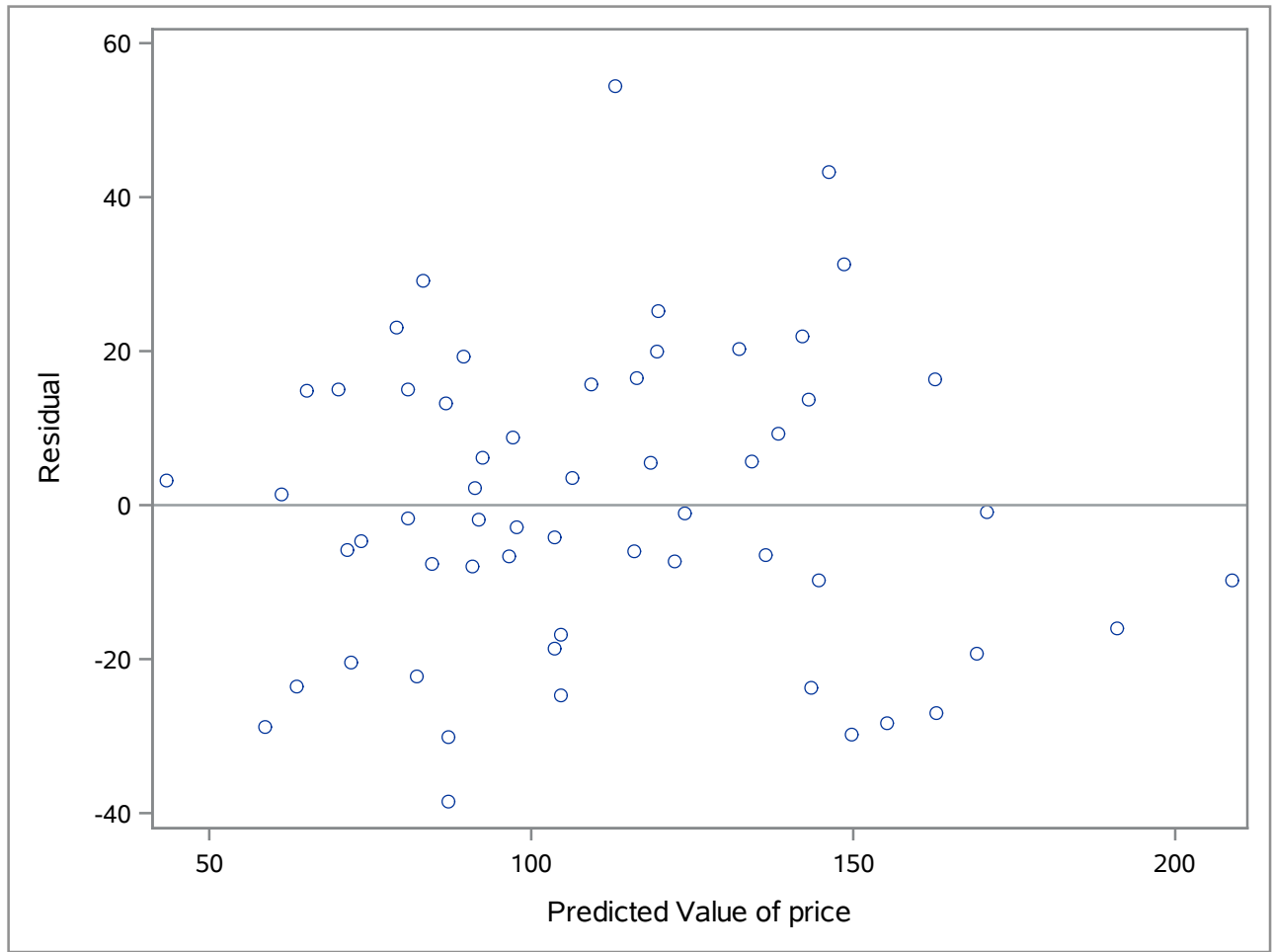


The REG Procedure
Model: MODEL1

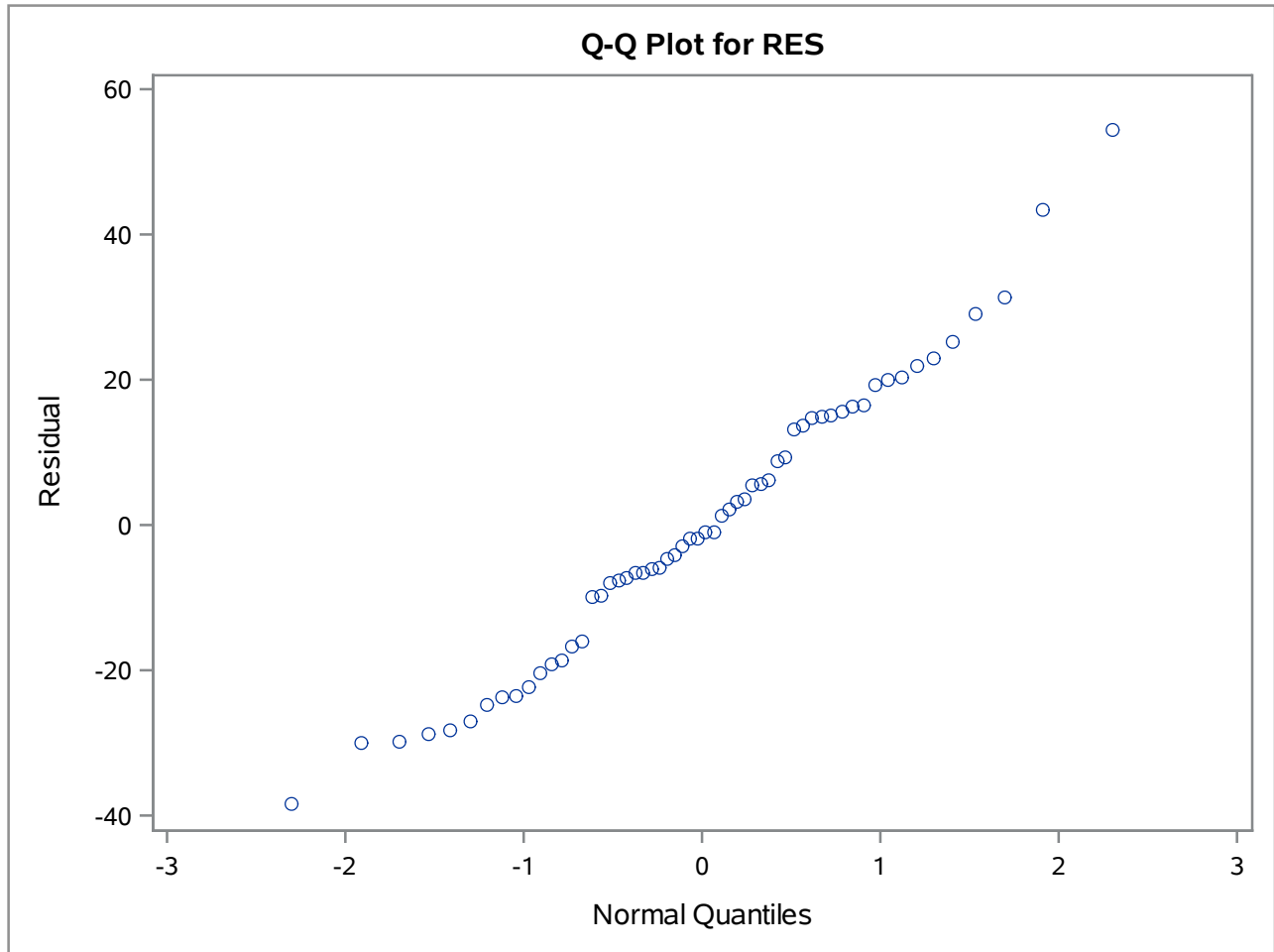


The REG Procedure
Model: MODEL1





The UNIVARIATE Procedure



The REG Procedure
Model: MODEL1
Dependent Variable: logprice

Number of Observations Read	60
Number of Observations Used	58
Number of Observations with Missing Values	2

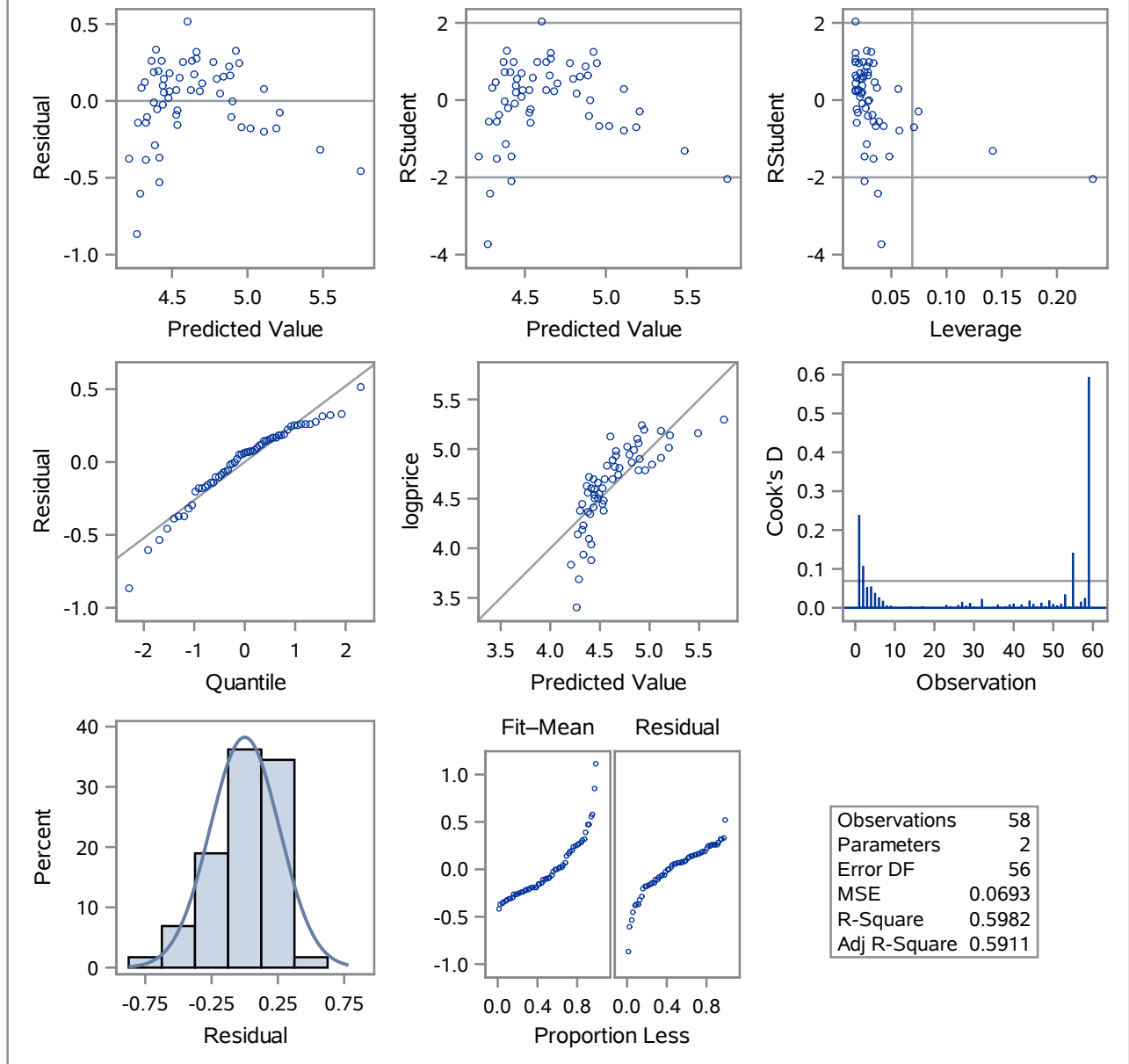
Analysis of Variance					
Source	DF	Sum of Squares	Mean Square	F Value	Pr > F
Model	1	5.77554	5.77554	83.39	<.0001
Error	56	3.87854	0.06926		
Corrected Total	57	9.65408			

Root MSE	0.26317	R-Square	0.5982
Dependent Mean	4.63466	Adj R-Sq	0.5911
Coeff Var	5.67835		

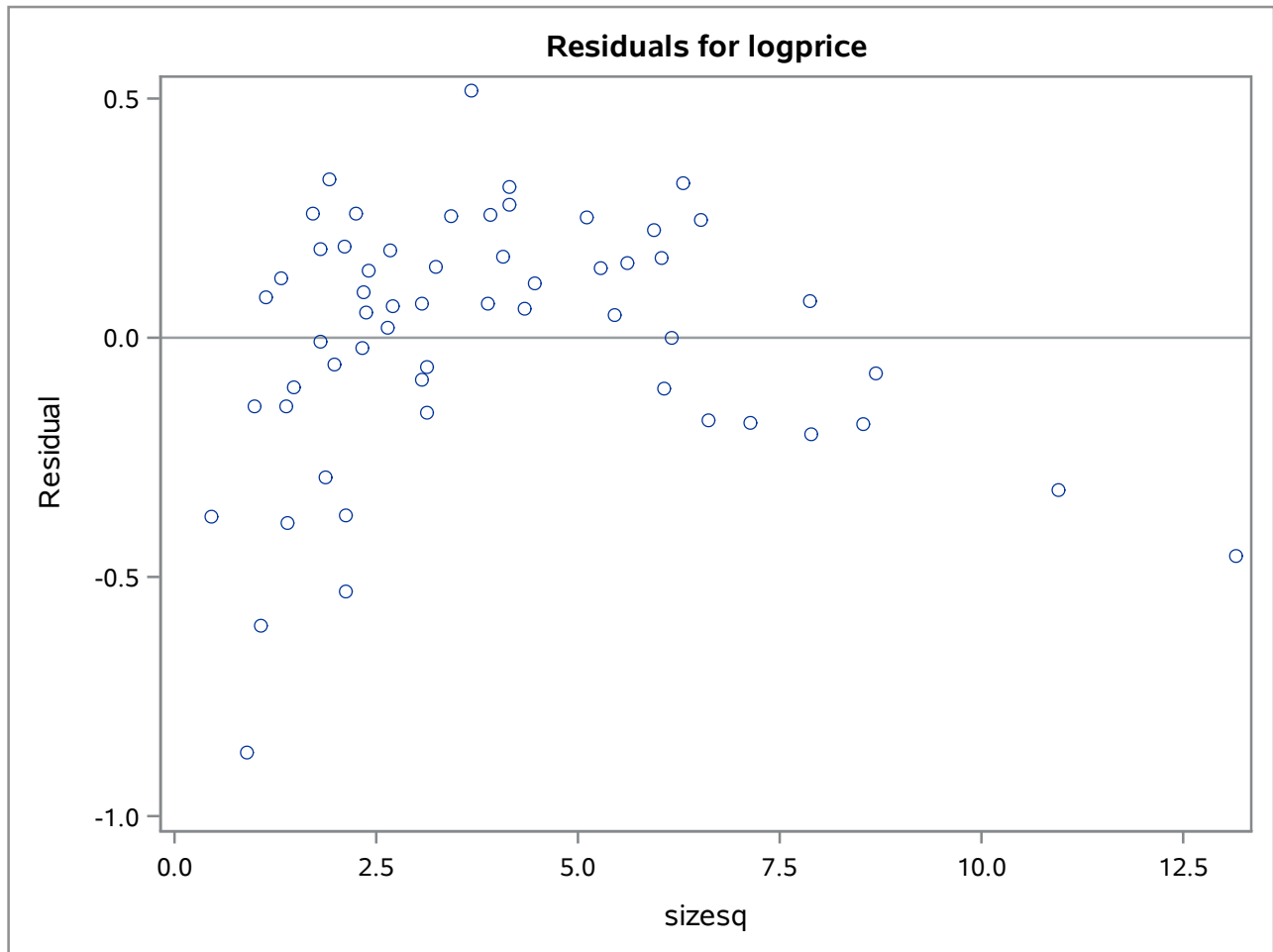
Parameter Estimates					
Variable	DF	Parameter Estimate	Standard Error	t Value	Pr > t
Intercept	1	4.15825	0.06258	66.45	<.0001
sizesq	1	0.12099	0.01325	9.13	<.0001

The REG Procedure
Model: MODEL1
Dependent Variable: logprice

Fit Diagnostics for logprice



The REG Procedure
Model: MODEL1
Dependent Variable: logprice



The REG Procedure
 Model: MODEL1
 Dependent Variable: logprice

