

The REG Procedure
Model: MODEL1
Dependent Variable: precip

Number of Observations Read	30
Number of Observations Used	30

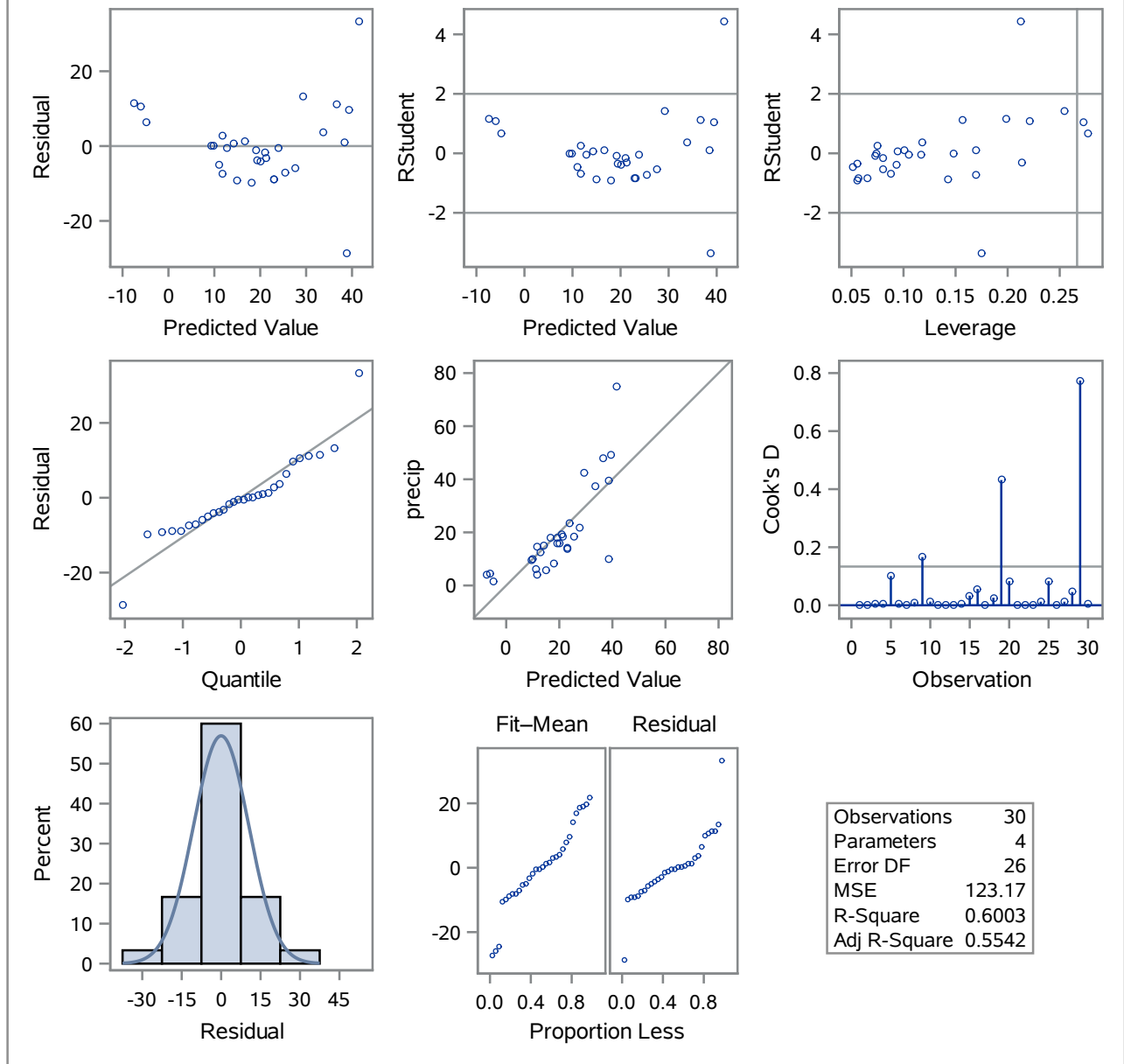
Analysis of Variance					
Source	DF	Sum of Squares	Mean Square	F Value	Pr > F
Model	3	4809.35596	1603.11865	13.02	<.0001
Error	26	3202.29762	123.16529		
Corrected Total	29	8011.65359			

Root MSE	11.09799	R-Square	0.6003
Dependent Mean	19.80733	Adj R-Sq	0.5542
Coeff Var	56.02968		

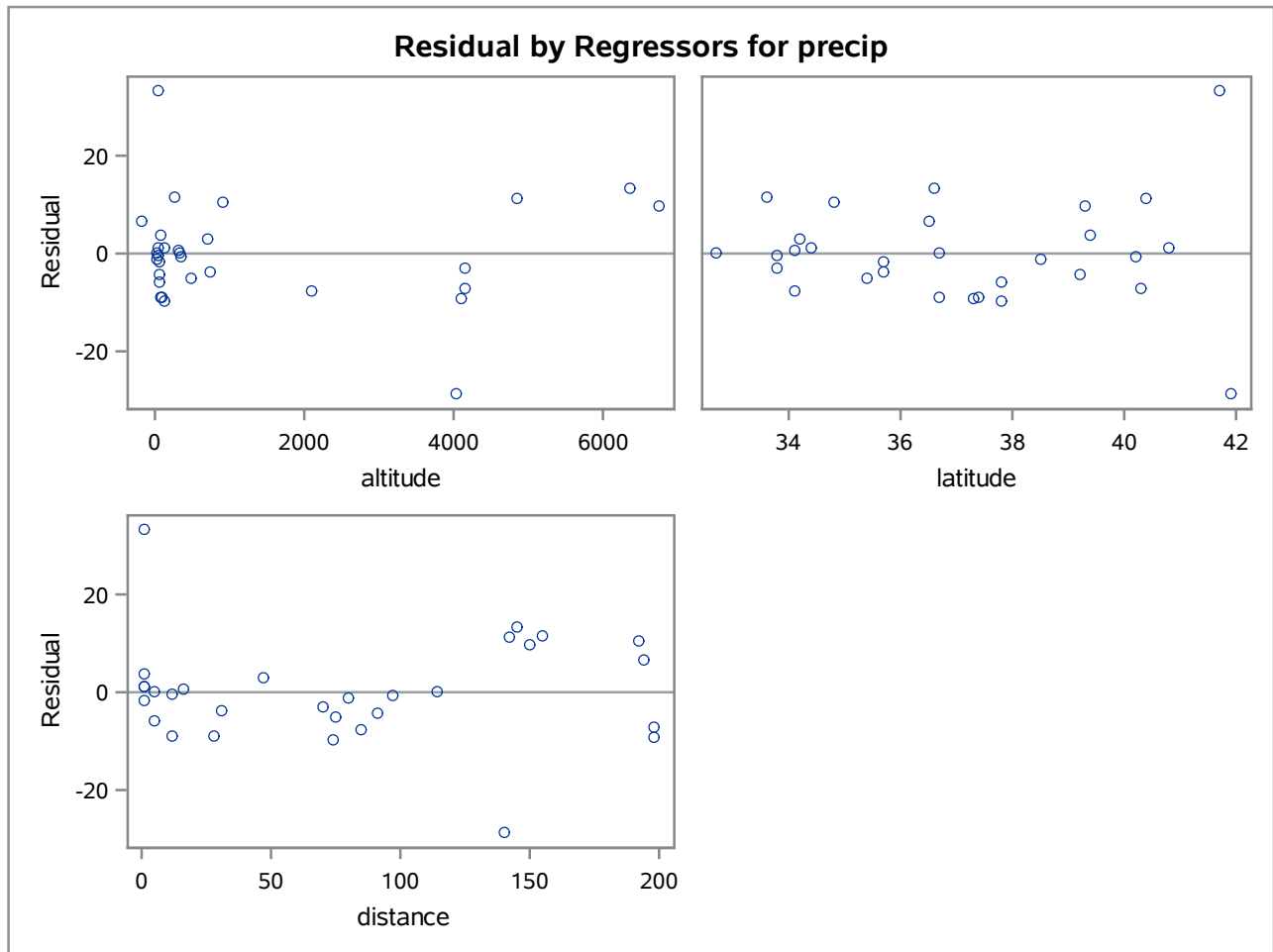
Parameter Estimates					
Variable	DF	Parameter Estimate	Standard Error	t Value	Pr > t
Intercept	1	-102.35743	29.20548	-3.50	0.0017
altitude	1	0.00409	0.00122	3.36	0.0024
latitude	1	3.45108	0.79486	4.34	0.0002
distance	1	-0.14286	0.03634	-3.93	0.0006

The REG Procedure
Model: MODEL1
Dependent Variable: precip

Fit Diagnostics for precip



The REG Procedure
Model: MODEL1
Dependent Variable: precip



The GLM Procedure

Number of Observations Read	30
Number of Observations Used	30

The GLM Procedure

Dependent Variable: precip

Source	DF	Sum of Squares	Mean Square	F Value	Pr > F
Model	3	4809.355964	1603.118655	13.02	<.0001
Error	26	3202.297623	123.165293		
Corrected Total	29	8011.653587			

R-Square	Coeff Var	Root MSE	precip Mean
0.600295	56.02968	11.09799	19.80733

Source	DF	Type I SS	Mean Square	F Value	Pr > F
altitude	1	730.727433	730.727433	5.93	0.0220
latitude	1	2175.250979	2175.250979	17.66	0.0003
distance	1	1903.377552	1903.377552	15.45	0.0006

Source	DF	Type III SS	Mean Square	F Value	Pr > F
altitude	1	1388.445025	1388.445025	11.27	0.0024
latitude	1	2321.740295	2321.740295	18.85	0.0002
distance	1	1903.377552	1903.377552	15.45	0.0006

Parameter	Estimate	Standard Error	t Value	Pr > t
Intercept	-102.3574291	29.20548173	-3.50	0.0017
altitude	0.0040905	0.00121831	3.36	0.0024
latitude	3.4510798	0.79486312	4.34	0.0002
distance	-0.1428578	0.03634006	-3.93	0.0006

The REG Procedure
Model: MODEL1
Dependent Variable: precip

Number of Observations Read	30
Number of Observations Used	30

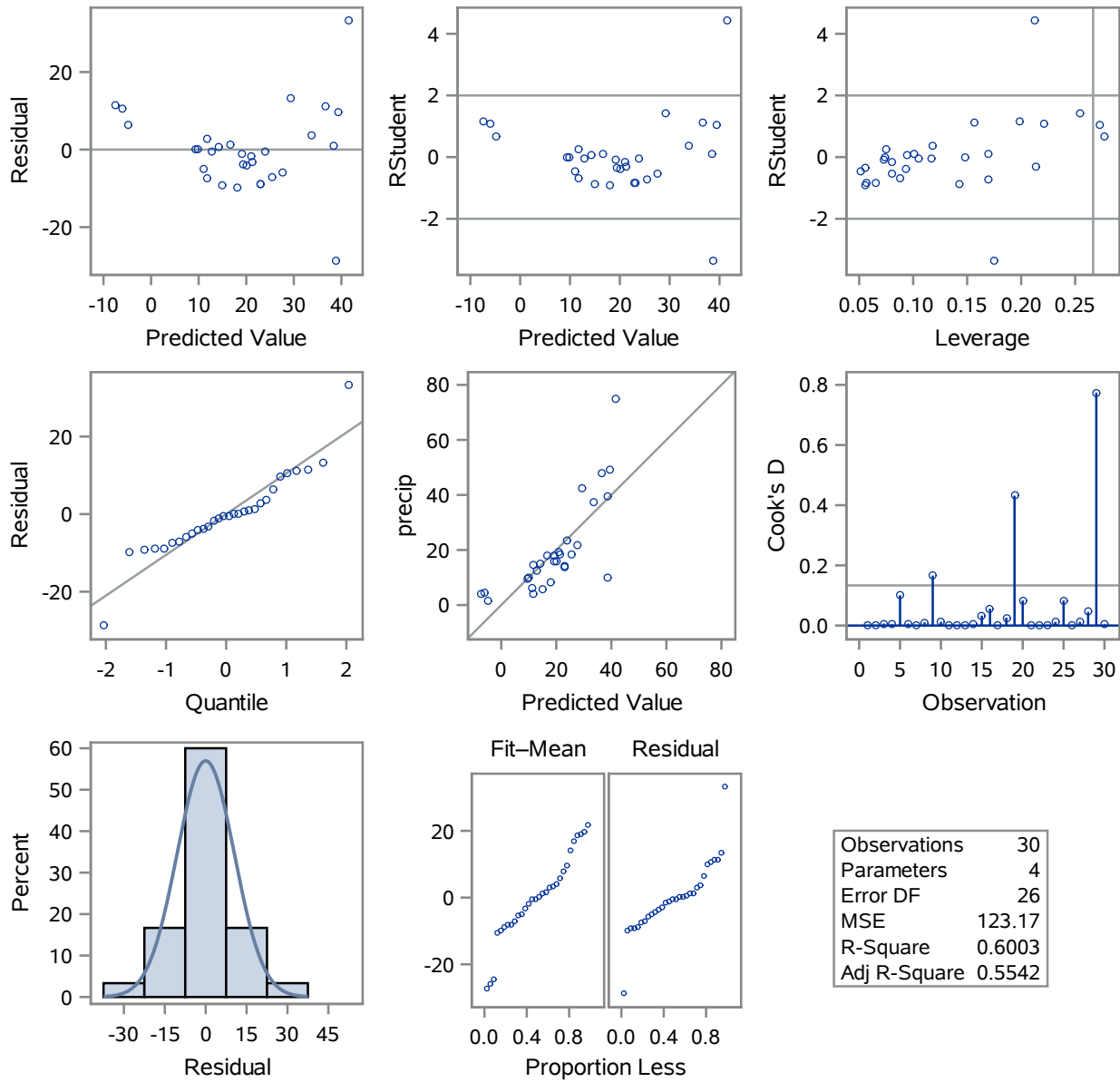
Analysis of Variance					
Source	DF	Sum of Squares	Mean Square	F Value	Pr > F
Model	3	4809.35596	1603.11865	13.02	<.0001
Error	26	3202.29762	123.16529		
Corrected Total	29	8011.65359			

Root MSE	11.09799	R-Square	0.6003
Dependent Mean	19.80733	Adj R-Sq	0.5542
Coeff Var	56.02968		

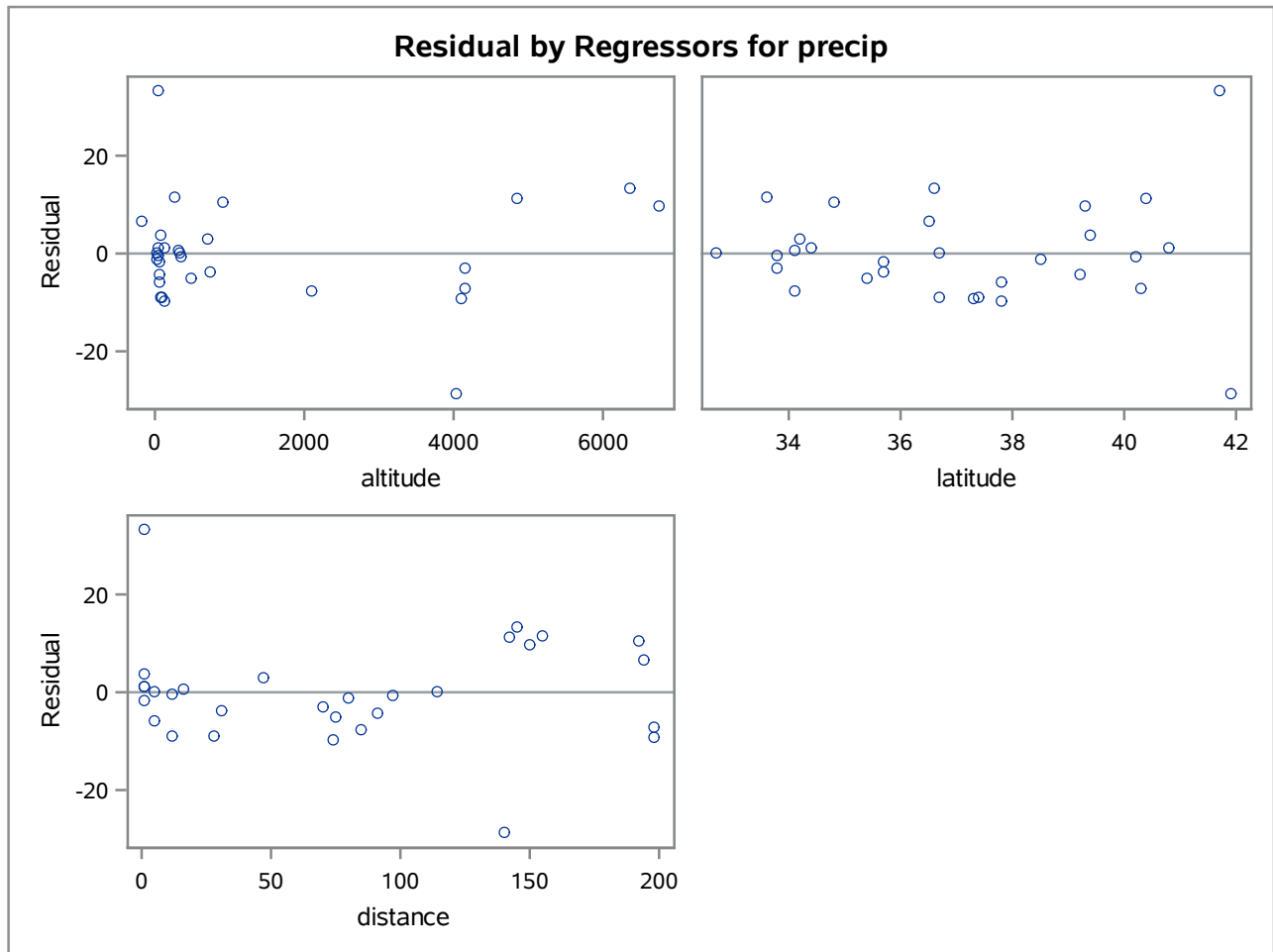
Parameter Estimates					
Variable	DF	Parameter Estimate	Standard Error	t Value	Pr > t
Intercept	1	-102.35743	29.20548	-3.50	0.0017
altitude	1	0.00409	0.00122	3.36	0.0024
latitude	1	3.45108	0.79486	4.34	0.0002
distance	1	-0.14286	0.03634	-3.93	0.0006

The REG Procedure
Model: MODEL1
Dependent Variable: precip

Fit Diagnostics for precip



The REG Procedure
Model: MODEL1
Dependent Variable: precip



The REG Procedure
Model: MODEL1

Test 1 Results for Dependent Variable precip				
Source	DF	Mean Square	F Value	Pr > F
Numerator	2	1072.23426	8.71	0.0013
Denominator	26	123.16529		

The REG Procedure
Model: MODEL1
Dependent Variable: precip

Number of Observations Read	31
Number of Observations Used	30
Number of Observations with Missing Values	1

Analysis of Variance					
Source	DF	Sum of Squares	Mean Square	F Value	Pr > F
Model	3	4809.35596	1603.11865	13.02	<.0001
Error	26	3202.29762	123.16529		
Corrected Total	29	8011.65359			

Root MSE	11.09799	R-Square	0.6003
Dependent Mean	19.80733	Adj R-Sq	0.5542
Coeff Var	56.02968		

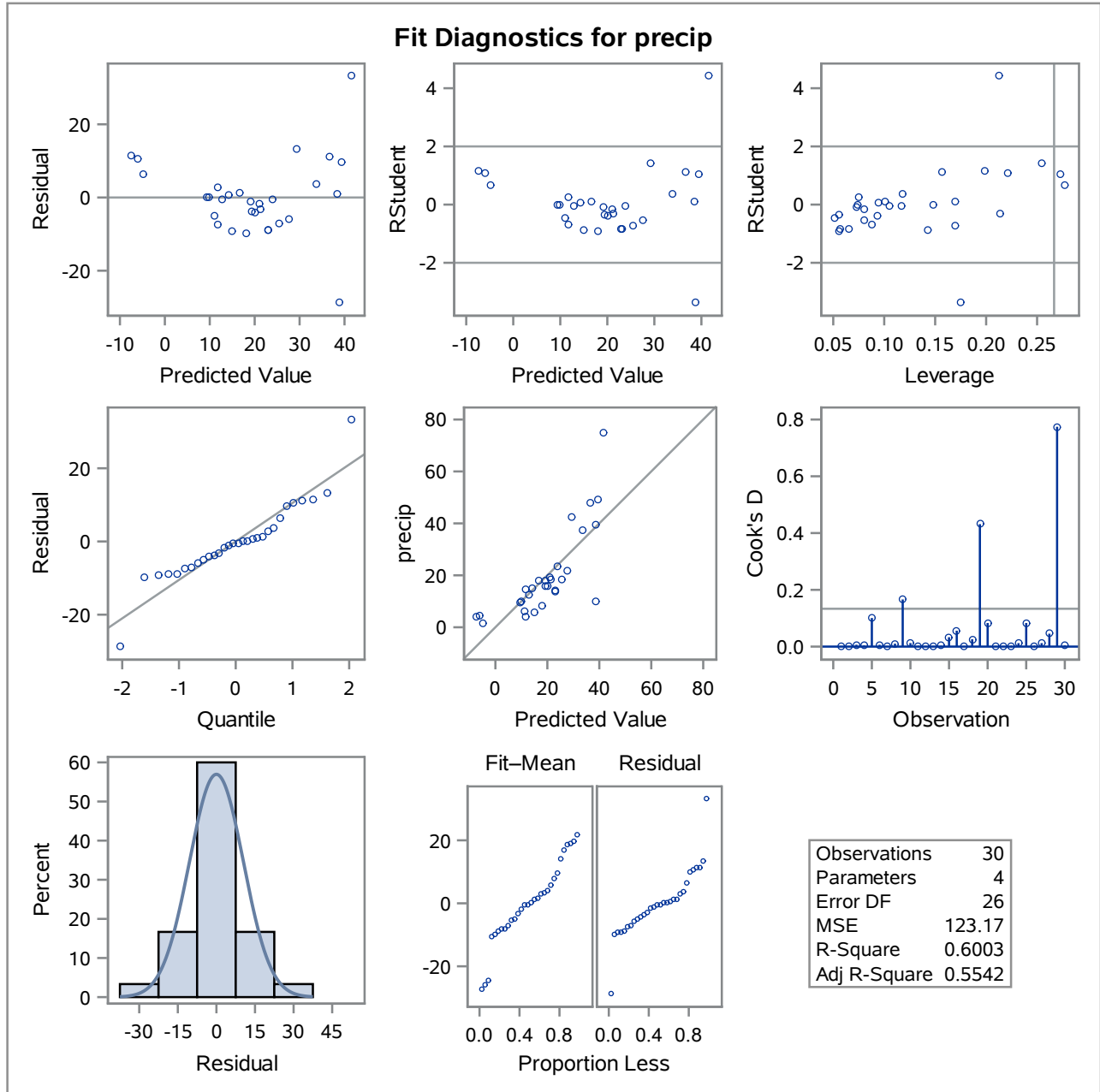
Parameter Estimates					
Variable	DF	Parameter Estimate	Standard Error	t Value	Pr > t
Intercept	1	-102.35743	29.20548	-3.50	0.0017
altitude	1	0.00409	0.00122	3.36	0.0024
latitude	1	3.45108	0.79486	4.34	0.0002
distance	1	-0.14286	0.03634	-3.93	0.0006

The REG Procedure
Model: MODEL1
Dependent Variable: precip

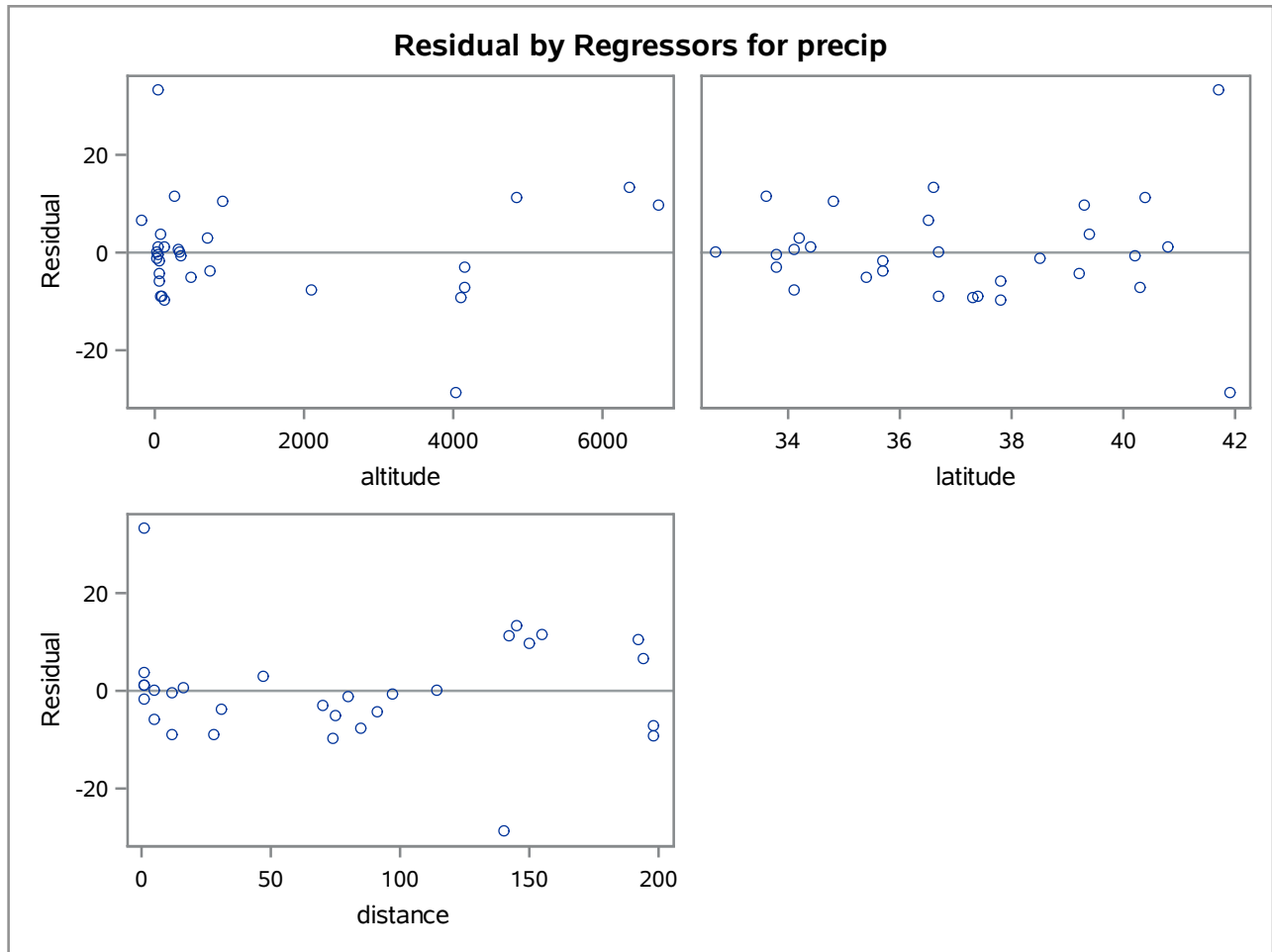
Output Statistics								
Obs	Dependent Variable	Predicted Value	Std Error Mean Predict	90% CL Mean		90% CL Predict		Residual
1	39.57	38.4797	4.5677	30.6889	46.2704	18.0102	58.9491	1.0903
2	23.27	23.9136	3.7950	17.4408	30.3865	3.9086	43.9187	-0.6436
3	18.20	21.2729	5.1318	12.5199	30.0258	0.4182	42.1276	-3.0729
4	37.48	33.7750	3.8151	27.2679	40.2820	13.7588	53.7911	3.7050
5	49.26	39.4605	5.7989	29.5699	49.3511	18.1034	60.8177	9.7995
6	21.82	27.5918	3.1443	22.2288	32.9548	7.9178	47.2658	-5.7718
7	18.07	19.1828	2.9880	14.0864	24.2792	-0.4202	38.7858	-1.1128
8	14.17	23.1015	2.6469	18.5869	27.6162	3.6417	42.5614	-8.9315
9	42.63	29.2534	5.5957	19.7092	38.7976	8.0544	50.4524	13.3766
10	13.85	22.8856	2.8424	18.0376	27.7336	3.3457	42.4255	-9.0356
11	9.44	9.3654	3.0287	4.1996	14.5311	-10.2558	28.9865	0.0746
12	19.33	20.9364	3.1472	15.5685	26.3043	1.2611	40.6118	-1.6064
13	15.67	19.4445	2.6287	14.9610	23.9280	-0.008149	38.8972	-3.7745
14	6.00	11.0967	2.5116	6.8128	15.3806	-8.3109	30.5043	-5.0967
15	5.73	14.8859	4.1929	7.7344	22.0373	-5.3490	35.1207	-9.1559
16	47.82	36.6194	4.3918	29.1287	44.1101	16.2622	56.9766	11.2006
17	17.95	16.7077	3.5255	10.6945	22.7209	-3.1534	36.5688	1.2423
18	18.20	25.4191	4.5705	17.6235	33.2146	4.9478	45.8904	-7.2191
19	10.03	38.7521	4.6459	30.8279	46.6762	18.2314	59.2727	-28.7221
20	4.63	-5.9539	5.2235	-14.8632	2.9554	-26.8747	14.9669	10.5839
21	14.74	11.8145	3.0459	6.6193	17.0096	-7.8144	31.4434	2.9255
22	15.02	14.3149	3.4165	8.4877	20.1421	-5.4907	34.1205	0.7051
23	12.36	12.7793	3.5949	6.6478	18.9108	-7.1179	32.6765	-0.4193
24	8.26	18.0332	2.6211	13.5626	22.5038	-1.4165	37.4829	-9.7732
25	4.05	-7.4478	4.9499	-15.8904	0.9947	-28.1742	13.2785	11.4978
26	9.94	9.8563	4.2752	2.5644	17.1482	-10.4286	30.1412	0.0837
27	4.25	11.7920	3.2983	6.1663	17.4177	-7.9552	31.5392	-7.5420
28	1.66	-4.8355	5.8428	-14.8011	5.1300	-26.2275	16.5564	6.4955
29	74.87	41.5529	5.1209	32.8186	50.2872	20.7060	62.3998	33.3171
30	15.95	20.1703	3.3986	14.3736	25.9670	0.3737	39.9669	-4.2203
31	.	26.0948	3.6010	19.9528	32.2368	6.1943	45.9952	.

The REG Procedure
 Model: MODEL1
 Dependent Variable: precip

Sum of Residuals	0
Sum of Squared Residuals	3202.29762
Predicted Residual SS (PRESS)	4862.75577



The REG Procedure
Model: MODEL1



The REG Procedure
Model: MODEL1
Dependent Variable: precip

Number of Observations Read	31
Number of Observations Used	30
Number of Observations with Missing Values	1

Analysis of Variance					
Source	DF	Sum of Squares	Mean Square	F Value	Pr > F
Model	3	4809.35596	1603.11865	13.02	<.0001
Error	26	3202.29762	123.16529		
Corrected Total	29	8011.65359			

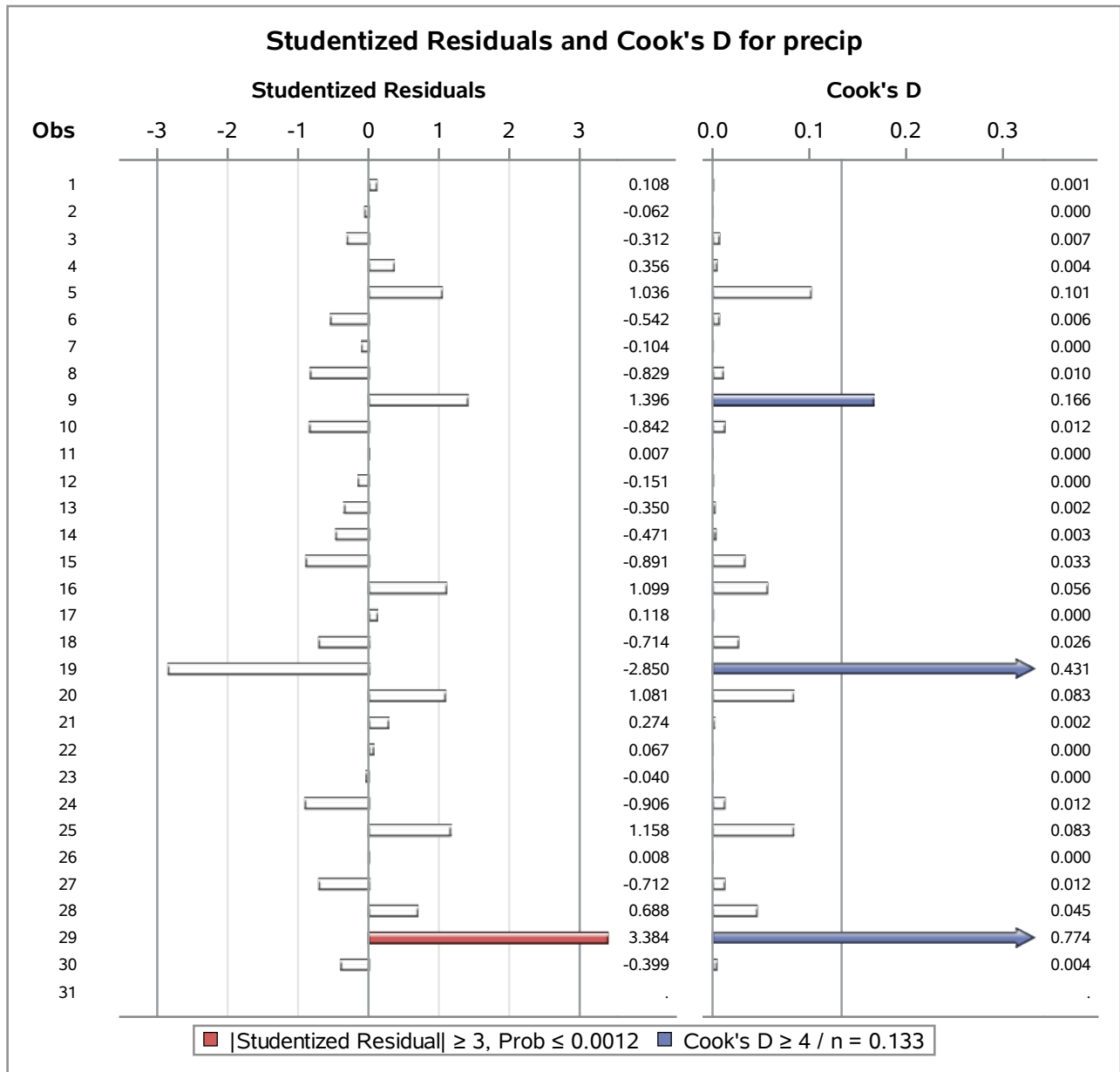
Root MSE	11.09799	R-Square	0.6003
Dependent Mean	19.80733	Adj R-Sq	0.5542
Coeff Var	56.02968		

Parameter Estimates					
Variable	DF	Parameter Estimate	Standard Error	t Value	Pr > t
Intercept	1	-102.35743	29.20548	-3.50	0.0017
altitude	1	0.00409	0.00122	3.36	0.0024
latitude	1	3.45108	0.79486	4.34	0.0002
distance	1	-0.14286	0.03634	-3.93	0.0006

The REG Procedure
Model: MODEL1
Dependent Variable: precip

Output Statistics							
Obs	Dependent Variable	Predicted Value	Std Error Mean Predict	Residual	Std Error Residual	Student Residual	Cook's D
1	39.57	38.4797	4.5677	1.0903	10.114	0.108	0.001
2	23.27	23.9136	3.7950	-0.6436	10.429	-0.062	0.000
3	18.20	21.2729	5.1318	-3.0729	9.840	-0.312	0.007
4	37.48	33.7750	3.8151	3.7050	10.422	0.356	0.004
5	49.26	39.4605	5.7989	9.7995	9.462	1.036	0.101
6	21.82	27.5918	3.1443	-5.7718	10.643	-0.542	0.006
7	18.07	19.1828	2.9880	-1.1128	10.688	-0.104	0.000
8	14.17	23.1015	2.6469	-8.9315	10.778	-0.829	0.010
9	42.63	29.2534	5.5957	13.3766	9.584	1.396	0.166
10	13.85	22.8856	2.8424	-9.0356	10.728	-0.842	0.012
11	9.44	9.3654	3.0287	0.0746	10.677	0.007	0.000
12	19.33	20.9364	3.1472	-1.6064	10.642	-0.151	0.000
13	15.67	19.4445	2.6287	-3.7745	10.782	-0.350	0.002
14	6.00	11.0967	2.5116	-5.0967	10.810	-0.471	0.003
15	5.73	14.8859	4.1929	-9.1559	10.275	-0.891	0.033
16	47.82	36.6194	4.3918	11.2006	10.192	1.099	0.056
17	17.95	16.7077	3.5255	1.2423	10.523	0.118	0.000
18	18.20	25.4191	4.5705	-7.2191	10.113	-0.714	0.026
19	10.03	38.7521	4.6459	-28.7221	10.079	-2.850	0.431
20	4.63	-5.9539	5.2235	10.5839	9.792	1.081	0.083
21	14.74	11.8145	3.0459	2.9255	10.672	0.274	0.002
22	15.02	14.3149	3.4165	0.7051	10.559	0.067	0.000
23	12.36	12.7793	3.5949	-0.4193	10.500	-0.040	0.000
24	8.26	18.0332	2.6211	-9.7732	10.784	-0.906	0.012
25	4.05	-7.4478	4.9499	11.4978	9.933	1.158	0.083
26	9.94	9.8563	4.2752	0.0837	10.241	0.008	0.000
27	4.25	11.7920	3.2983	-7.5420	10.597	-0.712	0.012
28	1.66	-4.8355	5.8428	6.4955	9.435	0.688	0.045
29	74.87	41.5529	5.1209	33.3171	9.846	3.384	0.774
30	15.95	20.1703	3.3986	-4.2203	10.565	-0.399	0.004
31	.	26.0948	3.6010

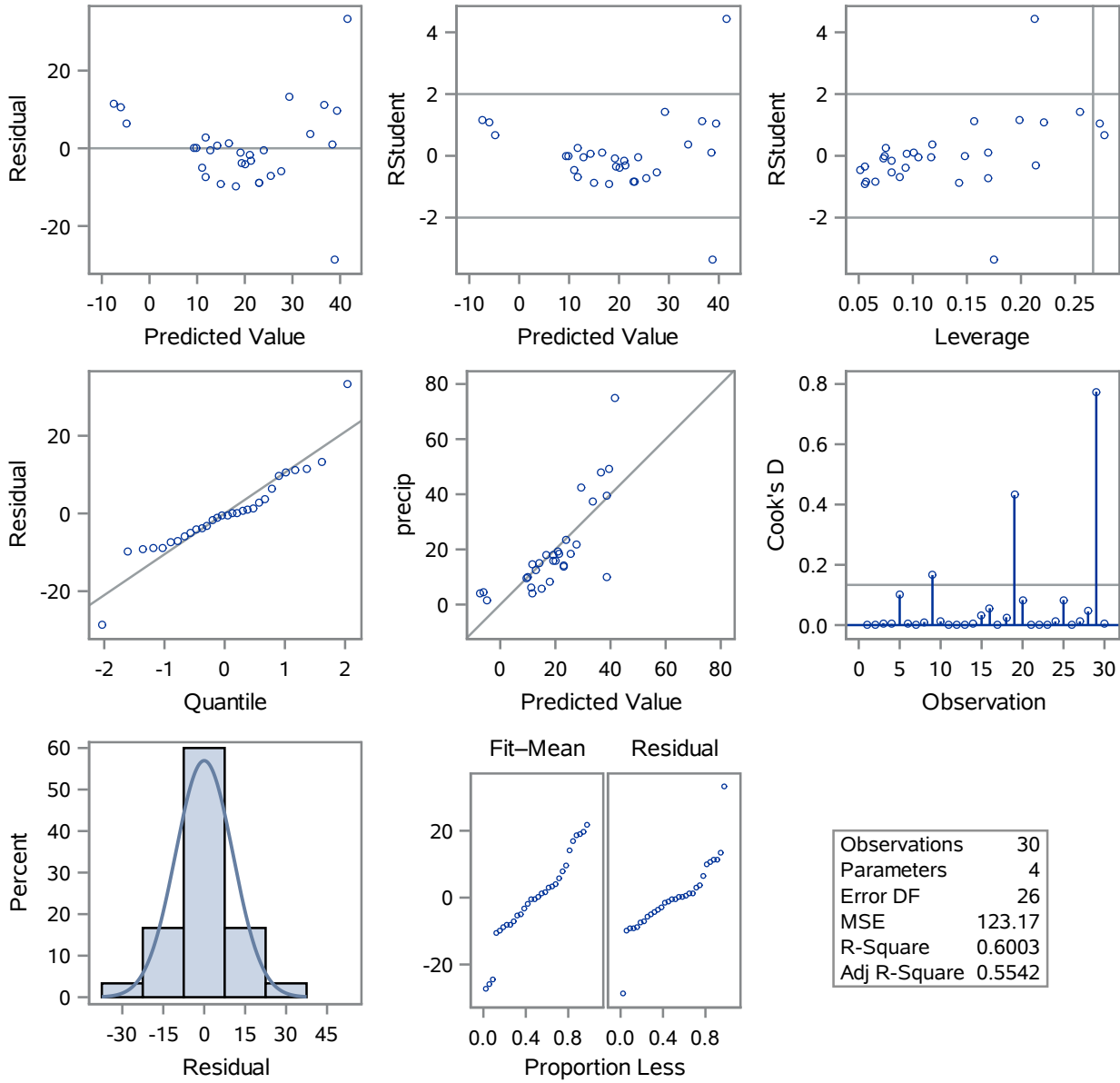
The REG Procedure
 Model: MODEL1
 Dependent Variable: precip



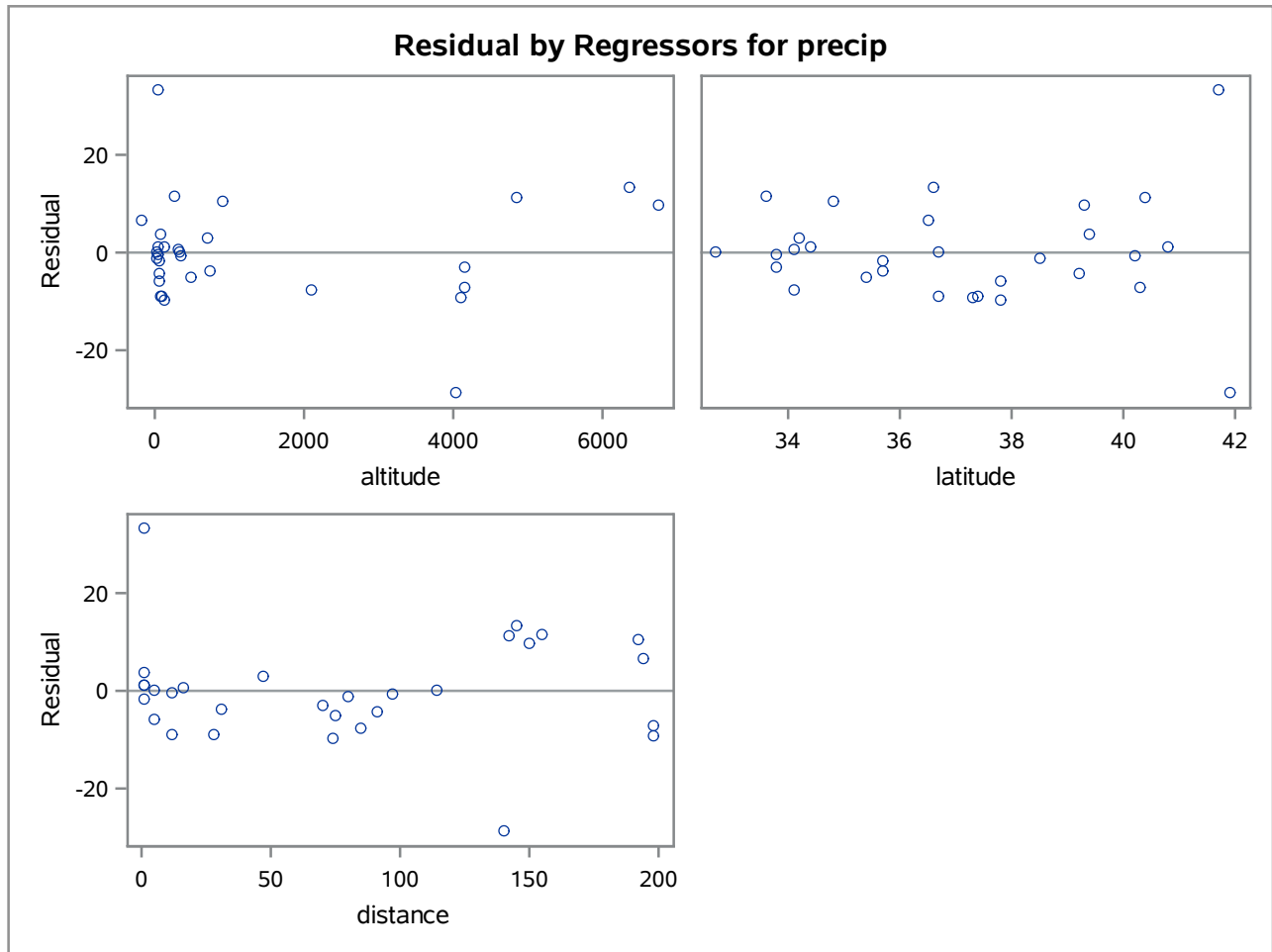
Sum of Residuals	0
Sum of Squared Residuals	3202.29762
Predicted Residual SS (PRESS)	4862.75577

The REG Procedure
Model: MODEL1

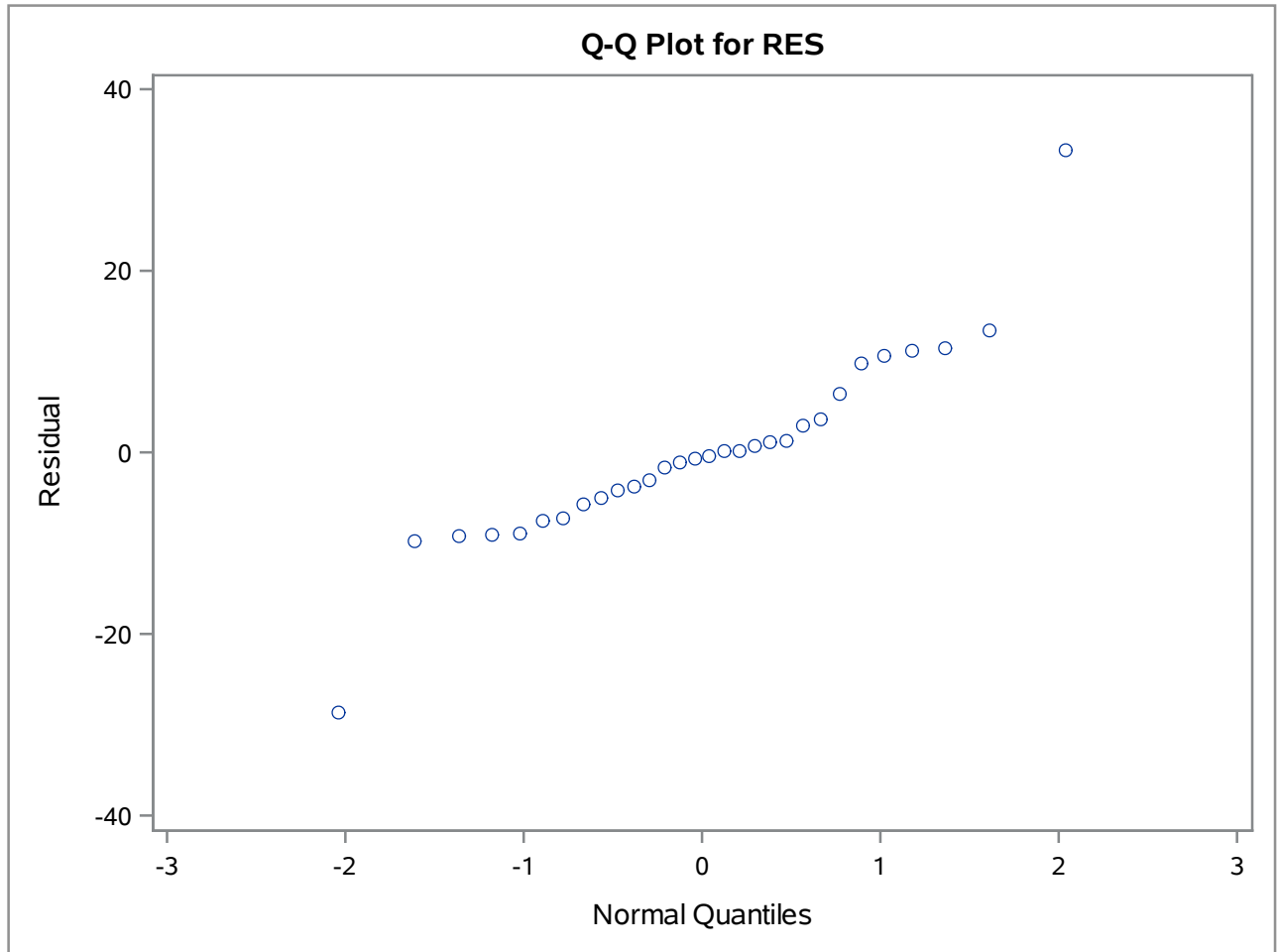
Fit Diagnostics for precip



The REG Procedure
Model: MODEL1



The UNIVARIATE Procedure



The REG Procedure
Model: MODEL1
Dependent Variable: precip

Number of Observations Read	31
Number of Observations Used	30
Number of Observations with Missing Values	1

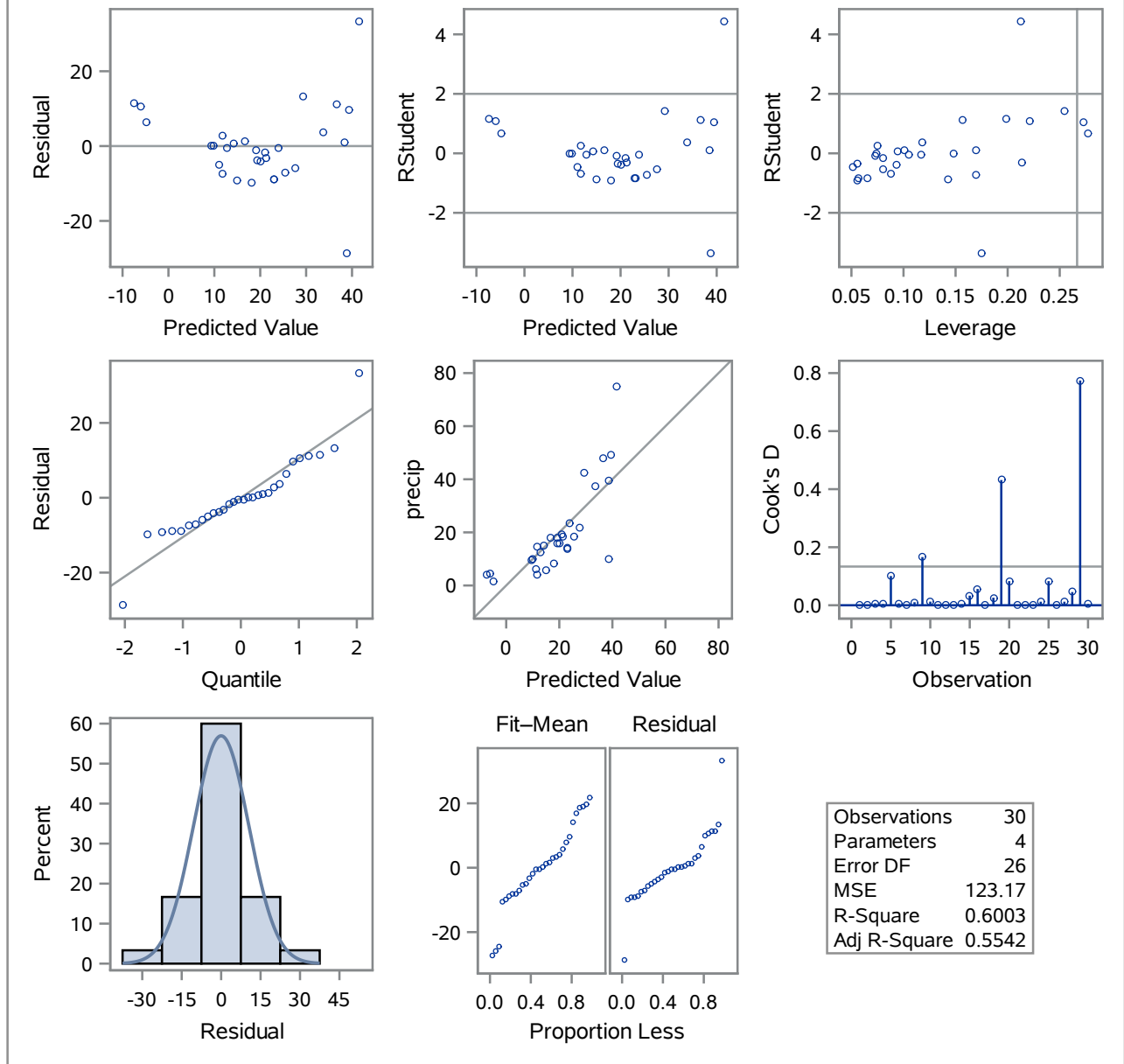
Analysis of Variance					
Source	DF	Sum of Squares	Mean Square	F Value	Pr > F
Model	3	4809.35596	1603.11865	13.02	<.0001
Error	26	3202.29762	123.16529		
Corrected Total	29	8011.65359			

Root MSE	11.09799	R-Square	0.6003
Dependent Mean	19.80733	Adj R-Sq	0.5542
Coeff Var	56.02968		

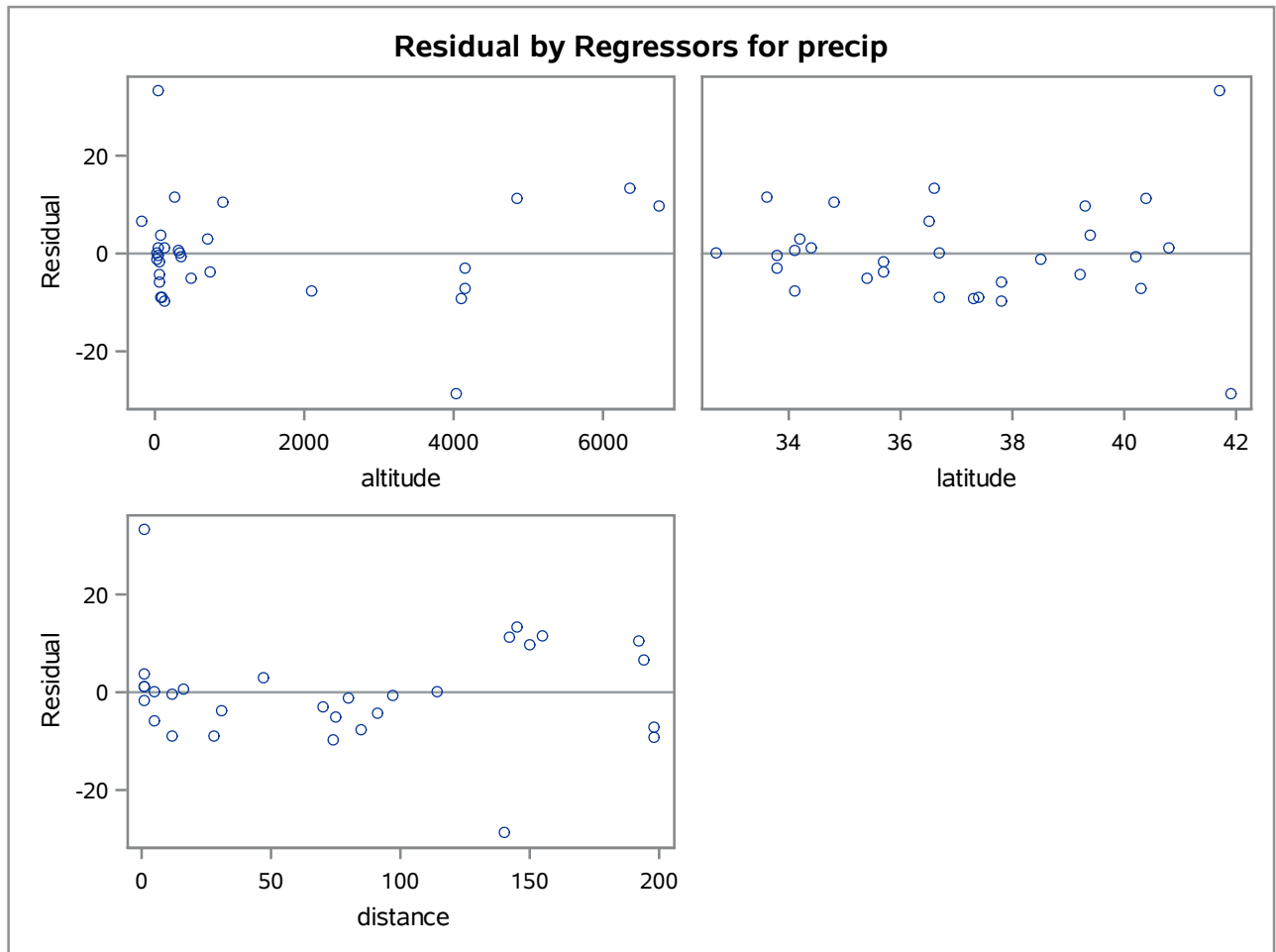
Parameter Estimates						
Variable	DF	Parameter Estimate	Standard Error	t Value	Pr > t	Variance Inflation
Intercept	1	-102.35743	29.20548	-3.50	0.0017	0
altitude	1	0.00409	0.00122	3.36	0.0024	1.53645
latitude	1	3.45108	0.79486	4.34	0.0002	1.05775
distance	1	-0.14286	0.03634	-3.93	0.0006	1.49334

The REG Procedure
 Model: MODEL1
 Dependent Variable: precip

Fit Diagnostics for precip



The REG Procedure
Model: MODEL1
Dependent Variable: precip



The REG Procedure
Model: MODEL1
Dependent Variable: precip

Number of Observations Read	31
Number of Observations Used	30
Number of Observations with Missing Values	1

Analysis of Variance					
Source	DF	Sum of Squares	Mean Square	F Value	Pr > F
Model	3	4809.35596	1603.11865	13.02	<.0001
Error	26	3202.29762	123.16529		
Corrected Total	29	8011.65359			

Root MSE	11.09799	R-Square	0.6003
Dependent Mean	19.80733	Adj R-Sq	0.5542
Coeff Var	56.02968		

Parameter Estimates					
Variable	DF	Parameter Estimate	Standard Error	t Value	Pr > t
Intercept	1	-102.35743	29.20548	-3.50	0.0017
altitude	1	0.00409	0.00122	3.36	0.0024
latitude	1	3.45108	0.79486	4.34	0.0002
distance	1	-0.14286	0.03634	-3.93	0.0006

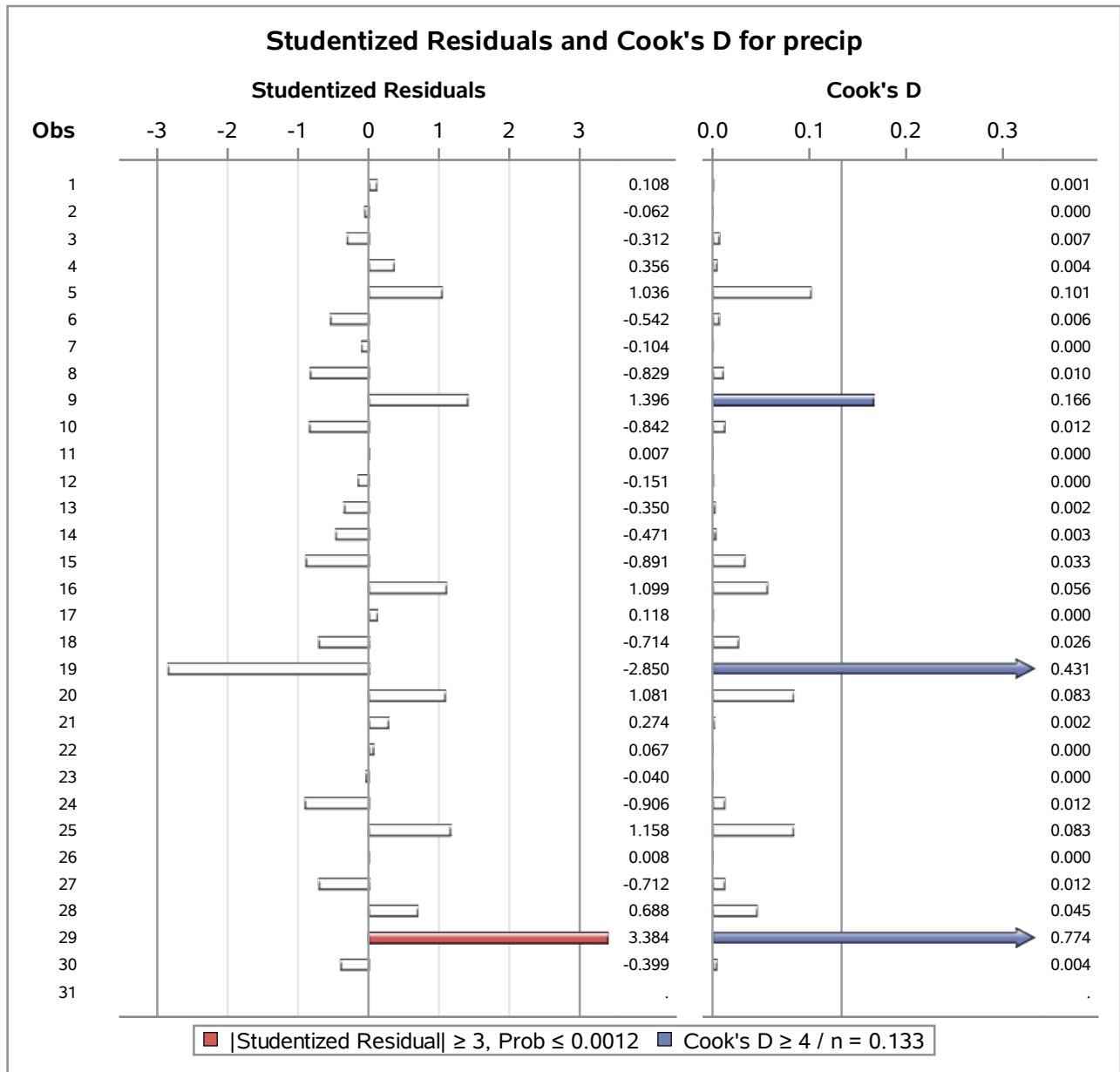
The REG Procedure
Model: MODEL1
Dependent Variable: precip

Output Statistics											
Obs	Dependent Variable	Predicted Value	Std Error Mean Predict	Residual	Std Error Residual	Student Residual	Cook's D	RStudent	Hat Diag H	Cov Ratio	DFFITS
1	39.57	38.4797	4.5677	1.0903	10.114	0.108	0.001	0.1057	0.1694	1.4059	0.0477
2	23.27	23.9136	3.7950	-0.6436	10.429	-0.062	0.000	-0.0605	0.1169	1.3240	-0.0220
3	18.20	21.2729	5.1318	-3.0729	9.840	-0.312	0.007	-0.3068	0.2138	1.4658	-0.1600
4	37.48	33.7750	3.8151	3.7050	10.422	0.356	0.004	0.3495	0.1182	1.3010	0.1279
5	49.26	39.4605	5.7989	9.7995	9.462	1.036	0.101	1.0371	0.2730	1.3597	0.6356
6	21.82	27.5918	3.1443	-5.7718	10.643	-0.542	0.006	-0.5348	0.0803	1.2154	-0.1580
7	18.07	19.1828	2.9880	-1.1128	10.688	-0.104	0.000	-0.1021	0.0725	1.2592	-0.0285
8	14.17	23.1015	2.6469	-8.9315	10.778	-0.829	0.010	-0.8236	0.0569	1.1145	-0.2023
9	42.63	29.2534	5.5957	13.3766	9.584	1.396	0.166	1.4230	0.2542	1.1488	0.8308
10	13.85	22.8856	2.8424	-9.0356	10.728	-0.842	0.012	-0.8374	0.0656	1.1208	-0.2219
11	9.44	9.3654	3.0287	0.0746	10.677	0.007	0.000	0.006854	0.0745	1.2640	0.0019
12	19.33	20.9364	3.1472	-1.6064	10.642	-0.151	0.000	-0.1481	0.0804	1.2677	-0.0438
13	15.67	19.4445	2.6287	-3.7745	10.782	-0.350	0.002	-0.3441	0.0561	1.2162	-0.0839
14	6.00	11.0967	2.5116	-5.0967	10.810	-0.471	0.003	-0.4643	0.0512	1.1914	-0.1079
15	5.73	14.8859	4.1929	-9.1559	10.275	-0.891	0.033	-0.8874	0.1427	1.2054	-0.3621
16	47.82	36.6194	4.3918	11.2006	10.192	1.099	0.056	1.1036	0.1566	1.1468	0.4755
17	17.95	16.7077	3.5255	1.2423	10.523	0.118	0.000	0.1158	0.1009	1.2984	0.0388
18	18.20	25.4191	4.5705	-7.2191	10.113	-0.714	0.026	-0.7069	0.1696	1.3016	-0.3195
19	10.03	38.7521	4.6459	-28.7221	10.079	-2.850	0.431	-3.3698	0.1752	0.3172	-1.5534
20	4.63	-5.9539	5.2235	10.5839	9.792	1.081	0.083	1.0845	0.2215	1.2503	0.5786
21	14.74	11.8145	3.0459	2.9255	10.672	0.274	0.002	0.2692	0.0753	1.2506	0.0768
22	15.02	14.3149	3.4165	0.7051	10.559	0.067	0.000	0.0655	0.0948	1.2914	0.0212
23	12.36	12.7793	3.5949	-0.4193	10.500	-0.040	0.000	-0.0392	0.1049	1.3067	-0.0134
24	8.26	18.0332	2.6211	-9.7732	10.784	-0.906	0.012	-0.9030	0.0558	1.0897	-0.2195
25	4.05	-7.4478	4.9499	11.4978	9.933	1.158	0.083	1.1655	0.1989	1.1818	0.5808
26	9.94	9.8563	4.2752	0.0837	10.241	0.008	0.000	0.008013	0.1484	1.3737	0.0033
27	4.25	11.7920	3.2983	-7.5420	10.597	-0.712	0.012	-0.7048	0.0883	1.1861	-0.2194
28	1.66	-4.8355	5.8428	6.4955	9.435	0.688	0.045	0.6813	0.2772	1.5036	0.4219
29	74.87	41.5529	5.1209	33.3171	9.846	3.384	0.774	4.4356	0.2129	0.1458	2.3070
30	15.95	20.1703	3.3986	-4.2203	10.565	-0.399	0.004	-0.3929	0.0938	1.2595	-0.1264
31	.	26.0948	3.6010	0.1053	.	.

The REG Procedure
Model: MODEL1
Dependent Variable: precip

Output Statistics				
Obs	DFBETAS			
	Intercept	altitude	latitude	distance
1	-0.0317	-0.0058	0.0353	-0.0212
2	0.0151	0.0120	-0.0158	-0.0074
3	-0.1021	-0.1247	0.0977	0.0659
4	-0.0644	-0.0111	0.0758	-0.0673
5	-0.0679	0.5253	0.0649	-0.1245
6	0.0334	0.0111	-0.0496	0.0904
7	0.0125	0.0179	-0.0139	-0.0088
8	0.0279	0.0444	-0.0482	0.0750
9	0.2136	0.7103	-0.2177	-0.1445
10	-0.0157	0.0145	-0.0078	0.1193
11	0.0001	-0.0012	-0.0001	0.0013
12	-0.0139	-0.0021	0.0094	0.0263
13	-0.0354	-0.0120	0.0274	0.0403
14	-0.0536	0.0336	0.0474	-0.0222
15	-0.0313	-0.0750	0.0440	-0.2130
16	-0.2029	0.2694	0.2028	-0.0176
17	0.0224	0.0045	-0.0190	-0.0208
18	0.1398	-0.0359	-0.1304	-0.1643
19	1.0786	-0.4457	-1.0827	-0.0922
20	0.1865	-0.2837	-0.2018	0.4980
21	0.0572	0.0052	-0.0521	-0.0154
22	0.0143	0.0023	-0.0125	-0.0091
23	-0.0093	-0.0007	0.0082	0.0053
24	0.0607	0.1284	-0.0738	-0.0551
25	0.2978	-0.2854	-0.3042	0.4254
26	0.0026	0.0003	-0.0024	-0.0013
27	-0.1728	-0.0771	0.1654	0.0122
28	0.0081	-0.3006	-0.0178	0.3800
29	-1.6882	-0.3111	1.8454	-0.9213
30	0.0693	0.0799	-0.0739	-0.0476
31

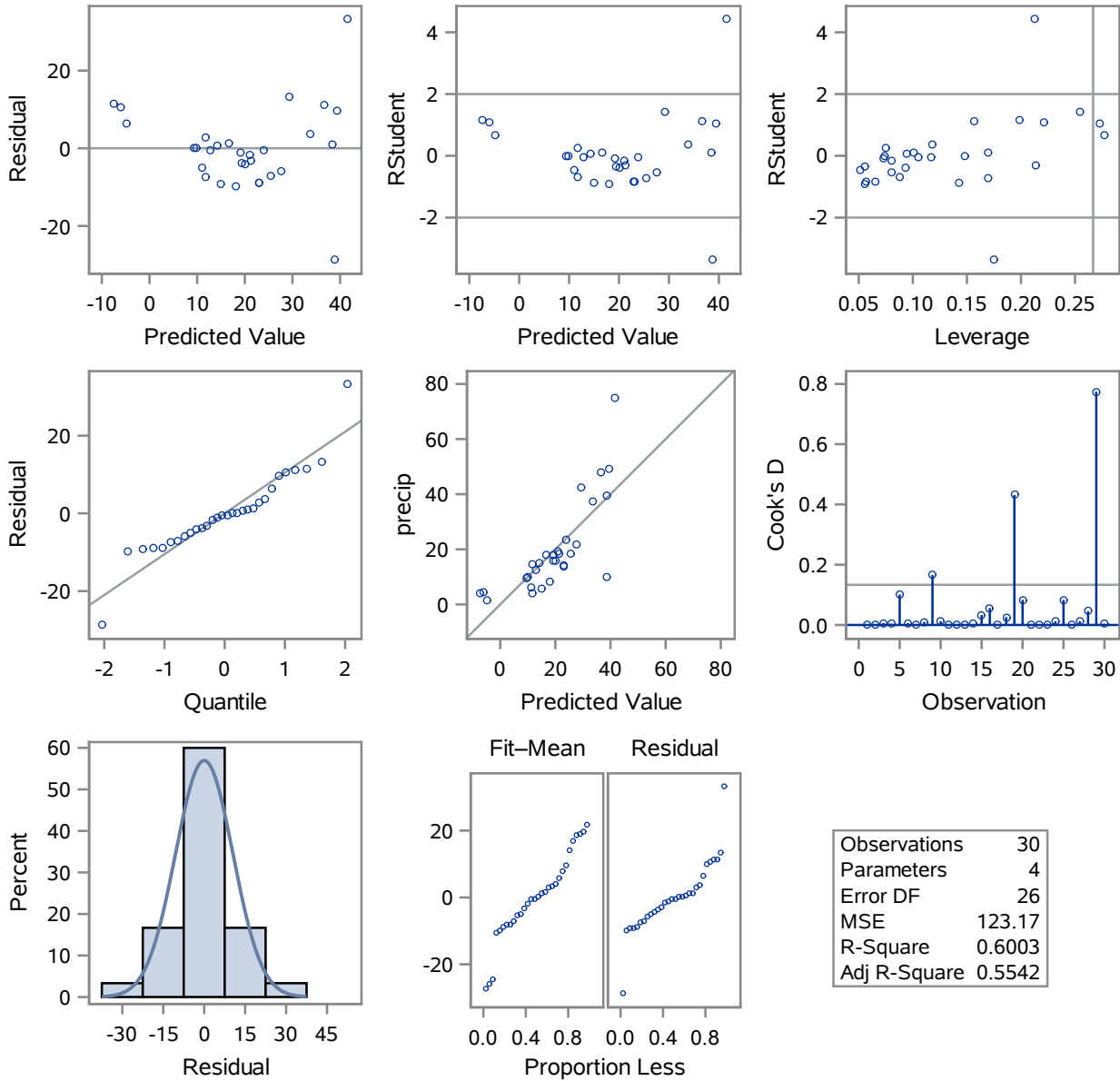
The REG Procedure
 Model: MODEL1
 Dependent Variable: precip



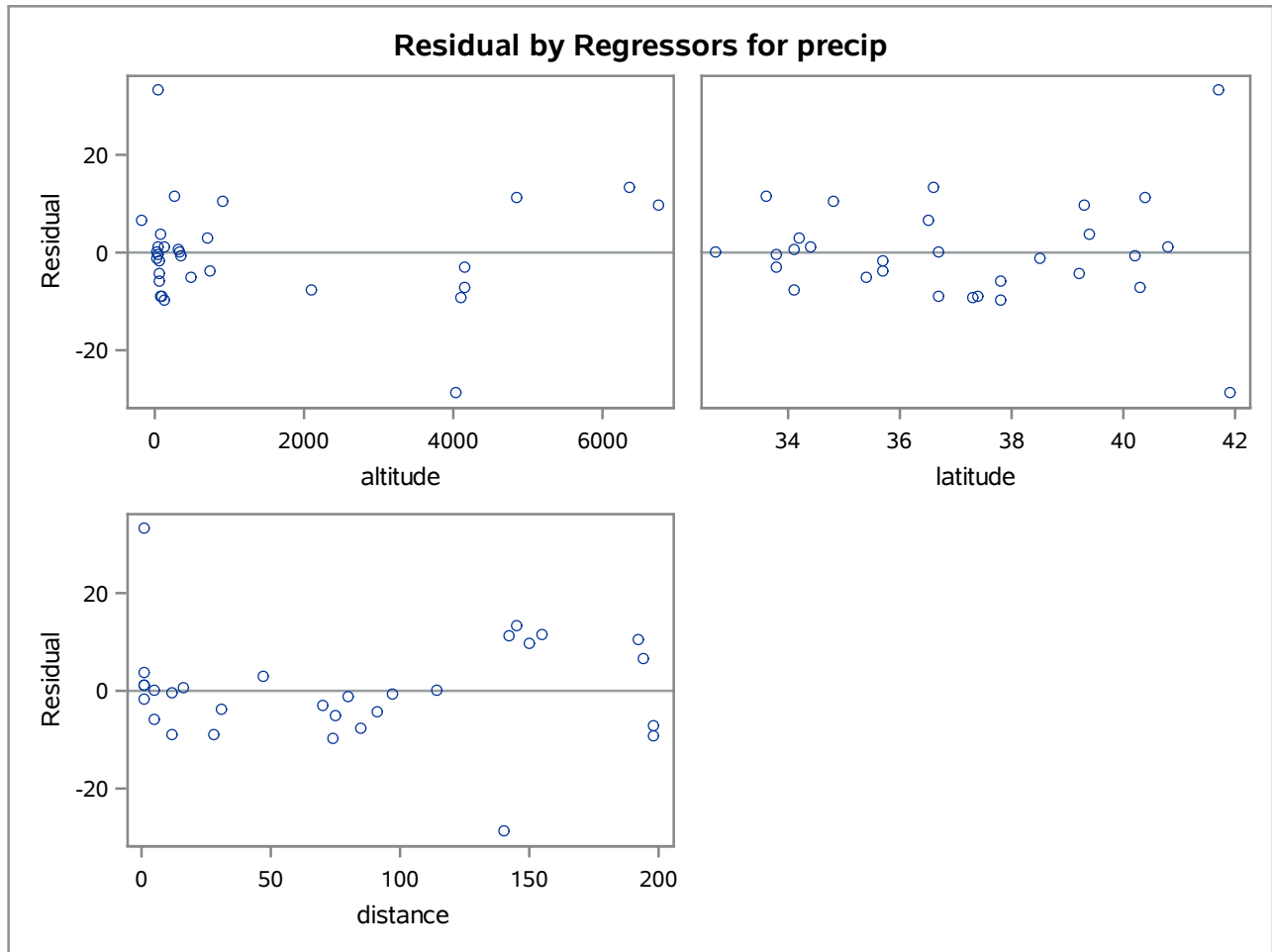
Sum of Residuals	0
Sum of Squared Residuals	3202.29762
Predicted Residual SS (PRESS)	4862.75577

The REG Procedure
Model: MODEL1

Fit Diagnostics for precip



The REG Procedure
Model: MODEL1



The REG Procedure
Model: MODEL1
Dependent Variable: precip

Number of Observations Read	31
Number of Observations Used	30
Number of Observations with Missing Values	1

Analysis of Variance					
Source	DF	Sum of Squares	Mean Square	F Value	Pr > F
Model	3	4809.35596	1603.11865	13.02	<.0001
Error	26	3202.29762	123.16529		
Corrected Total	29	8011.65359			

Root MSE	11.09799	R-Square	0.6003
Dependent Mean	19.80733	Adj R-Sq	0.5542
Coeff Var	56.02968		

Parameter Estimates						
Variable	DF	Parameter Estimate	Standard Error	t Value	Pr > t	Variance Inflation
Intercept	1	-102.35743	29.20548	-3.50	0.0017	0
altitude	1	0.00409	0.00122	3.36	0.0024	1.53645
latitude	1	3.45108	0.79486	4.34	0.0002	1.05775
distance	1	-0.14286	0.03634	-3.93	0.0006	1.49334

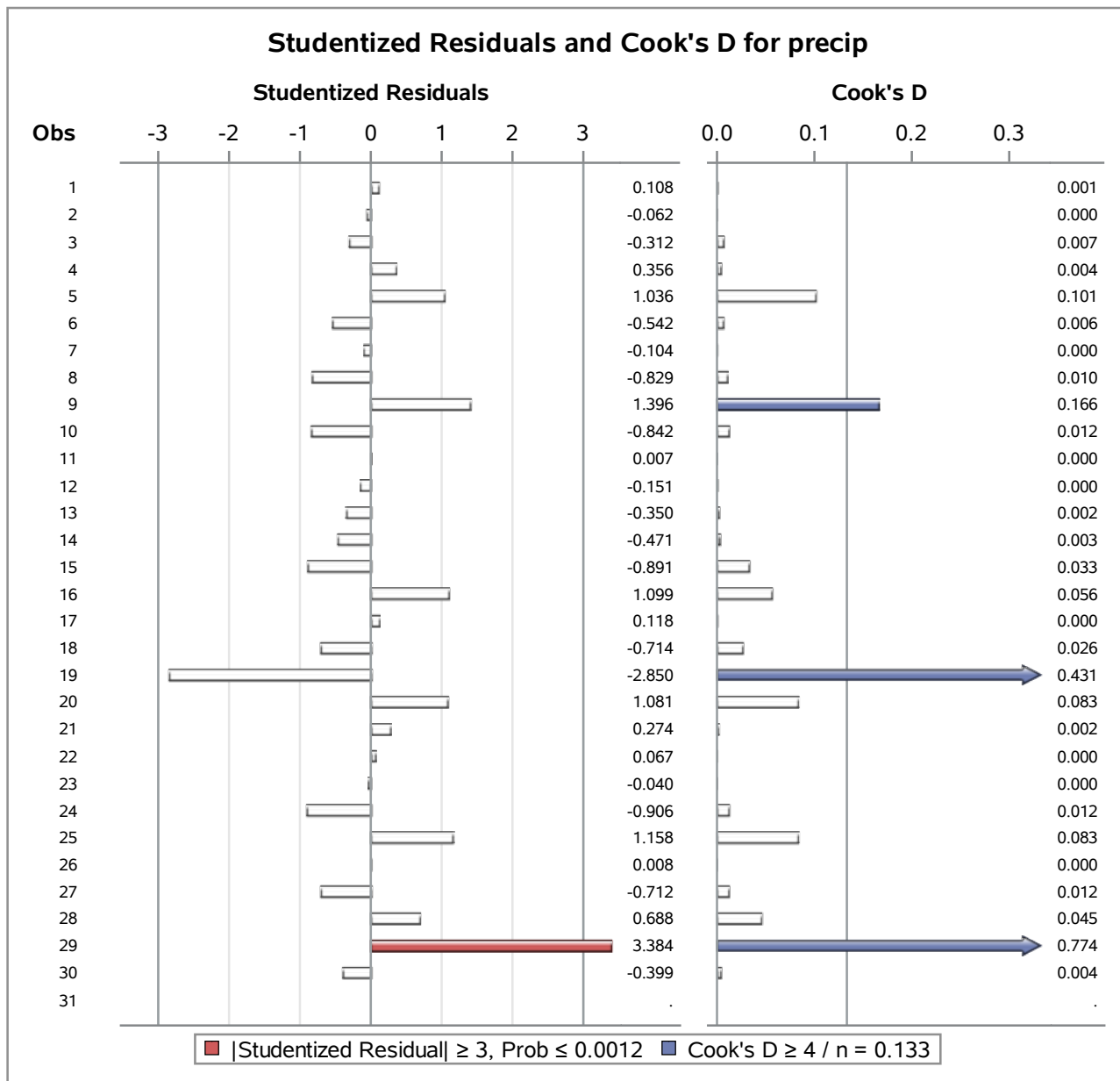
The REG Procedure
Model: MODEL1
Dependent Variable: precip

Output Statistics											
Obs	Dependent Variable	Predicted Value	Std Error Mean Predict	Residual	Std Error Residual	Student Residual	Cook's D	RStudent	Hat Diag H	Cov Ratio	DFFITs
1	39.57	38.4797	4.5677	1.0903	10.114	0.108	0.001	0.1057	0.1694	1.4059	0.0477
2	23.27	23.9136	3.7950	-0.6436	10.429	-0.062	0.000	-0.0605	0.1169	1.3240	-0.0220
3	18.20	21.2729	5.1318	-3.0729	9.840	-0.312	0.007	-0.3068	0.2138	1.4658	-0.1600
4	37.48	33.7750	3.8151	3.7050	10.422	0.356	0.004	0.3495	0.1182	1.3010	0.1279
5	49.26	39.4605	5.7989	9.7995	9.462	1.036	0.101	1.0371	0.2730	1.3597	0.6356
6	21.82	27.5918	3.1443	-5.7718	10.643	-0.542	0.006	-0.5348	0.0803	1.2154	-0.1580
7	18.07	19.1828	2.9880	-1.1128	10.688	-0.104	0.000	-0.1021	0.0725	1.2592	-0.0285
8	14.17	23.1015	2.6469	-8.9315	10.778	-0.829	0.010	-0.8236	0.0569	1.1145	-0.2023
9	42.63	29.2534	5.5957	13.3766	9.584	1.396	0.166	1.4230	0.2542	1.1488	0.8308
10	13.85	22.8856	2.8424	-9.0356	10.728	-0.842	0.012	-0.8374	0.0656	1.1208	-0.2219
11	9.44	9.3654	3.0287	0.0746	10.677	0.007	0.000	0.006854	0.0745	1.2640	0.0019
12	19.33	20.9364	3.1472	-1.6064	10.642	-0.151	0.000	-0.1481	0.0804	1.2677	-0.0438
13	15.67	19.4445	2.6287	-3.7745	10.782	-0.350	0.002	-0.3441	0.0561	1.2162	-0.0839
14	6.00	11.0967	2.5116	-5.0967	10.810	-0.471	0.003	-0.4643	0.0512	1.1914	-0.1079
15	5.73	14.8859	4.1929	-9.1559	10.275	-0.891	0.033	-0.8874	0.1427	1.2054	-0.3621
16	47.82	36.6194	4.3918	11.2006	10.192	1.099	0.056	1.1036	0.1566	1.1468	0.4755
17	17.95	16.7077	3.5255	1.2423	10.523	0.118	0.000	0.1158	0.1009	1.2984	0.0388
18	18.20	25.4191	4.5705	-7.2191	10.113	-0.714	0.026	-0.7069	0.1696	1.3016	-0.3195
19	10.03	38.7521	4.6459	-28.7221	10.079	-2.850	0.431	-3.3698	0.1752	0.3172	-1.5534
20	4.63	-5.9539	5.2235	10.5839	9.792	1.081	0.083	1.0845	0.2215	1.2503	0.5786
21	14.74	11.8145	3.0459	2.9255	10.672	0.274	0.002	0.2692	0.0753	1.2506	0.0768
22	15.02	14.3149	3.4165	0.7051	10.559	0.067	0.000	0.0655	0.0948	1.2914	0.0212
23	12.36	12.7793	3.5949	-0.4193	10.500	-0.040	0.000	-0.0392	0.1049	1.3067	-0.0134
24	8.26	18.0332	2.6211	-9.7732	10.784	-0.906	0.012	-0.9030	0.0558	1.0897	-0.2195
25	4.05	-7.4478	4.9499	11.4978	9.933	1.158	0.083	1.1655	0.1989	1.1818	0.5808
26	9.94	9.8563	4.2752	0.0837	10.241	0.008	0.000	0.008013	0.1484	1.3737	0.0033
27	4.25	11.7920	3.2983	-7.5420	10.597	-0.712	0.012	-0.7048	0.0883	1.1861	-0.2194
28	1.66	-4.8355	5.8428	6.4955	9.435	0.688	0.045	0.6813	0.2772	1.5036	0.4219
29	74.87	41.5529	5.1209	33.3171	9.846	3.384	0.774	4.4356	0.2129	0.1458	2.3070
30	15.95	20.1703	3.3986	-4.2203	10.565	-0.399	0.004	-0.3929	0.0938	1.2595	-0.1264
31	.	26.0948	3.6010	0.1053	.	.

The REG Procedure
Model: MODEL1
Dependent Variable: precip

Output Statistics				
Obs	DFBETAS			
	Intercept	altitude	latitude	distance
1	-0.0317	-0.0058	0.0353	-0.0212
2	0.0151	0.0120	-0.0158	-0.0074
3	-0.1021	-0.1247	0.0977	0.0659
4	-0.0644	-0.0111	0.0758	-0.0673
5	-0.0679	0.5253	0.0649	-0.1245
6	0.0334	0.0111	-0.0496	0.0904
7	0.0125	0.0179	-0.0139	-0.0088
8	0.0279	0.0444	-0.0482	0.0750
9	0.2136	0.7103	-0.2177	-0.1445
10	-0.0157	0.0145	-0.0078	0.1193
11	0.0001	-0.0012	-0.0001	0.0013
12	-0.0139	-0.0021	0.0094	0.0263
13	-0.0354	-0.0120	0.0274	0.0403
14	-0.0536	0.0336	0.0474	-0.0222
15	-0.0313	-0.0750	0.0440	-0.2130
16	-0.2029	0.2694	0.2028	-0.0176
17	0.0224	0.0045	-0.0190	-0.0208
18	0.1398	-0.0359	-0.1304	-0.1643
19	1.0786	-0.4457	-1.0827	-0.0922
20	0.1865	-0.2837	-0.2018	0.4980
21	0.0572	0.0052	-0.0521	-0.0154
22	0.0143	0.0023	-0.0125	-0.0091
23	-0.0093	-0.0007	0.0082	0.0053
24	0.0607	0.1284	-0.0738	-0.0551
25	0.2978	-0.2854	-0.3042	0.4254
26	0.0026	0.0003	-0.0024	-0.0013
27	-0.1728	-0.0771	0.1654	0.0122
28	0.0081	-0.3006	-0.0178	0.3800
29	-1.6882	-0.3111	1.8454	-0.9213
30	0.0693	0.0799	-0.0739	-0.0476
31

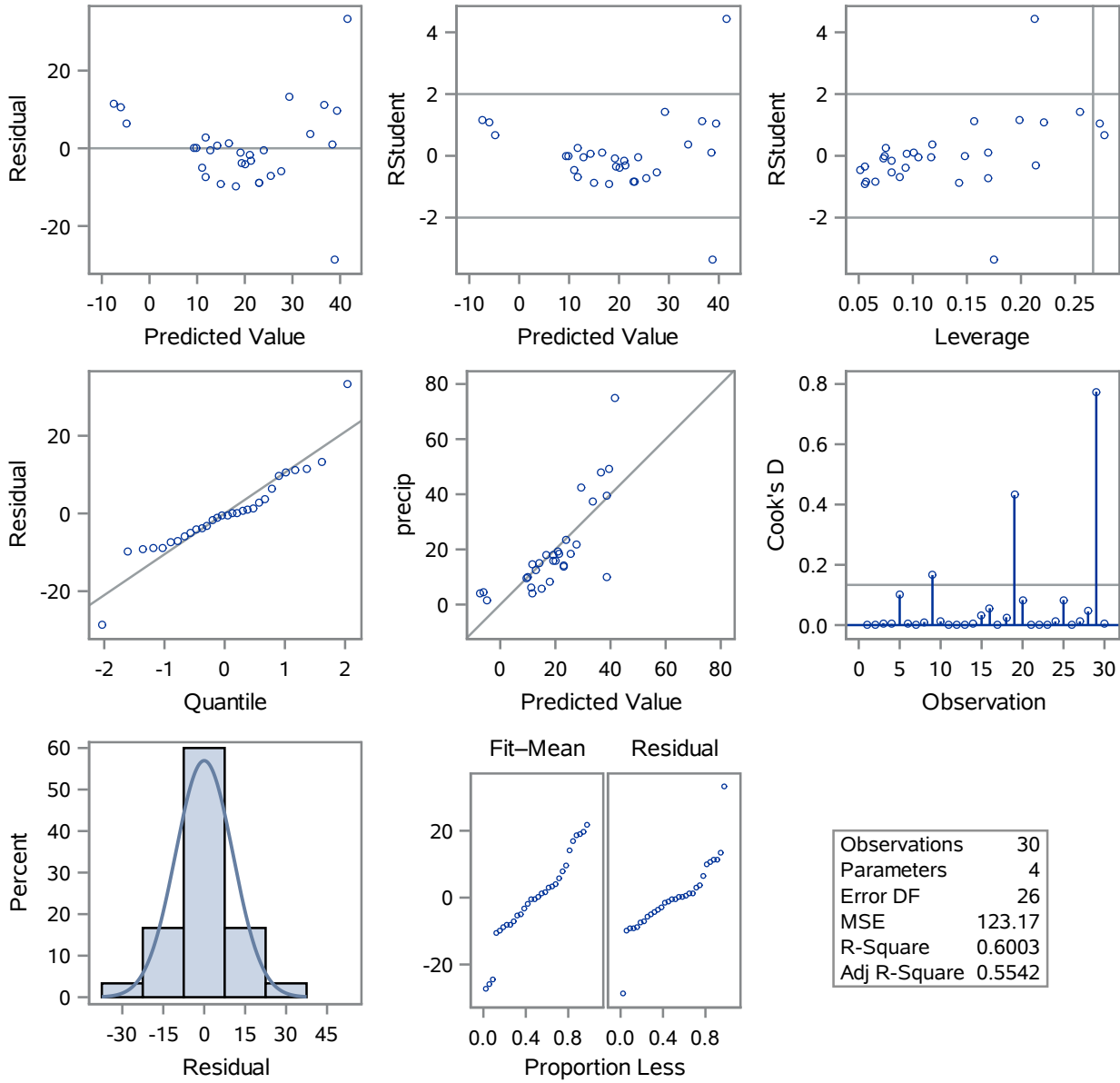
The REG Procedure
 Model: MODEL1
 Dependent Variable: precip



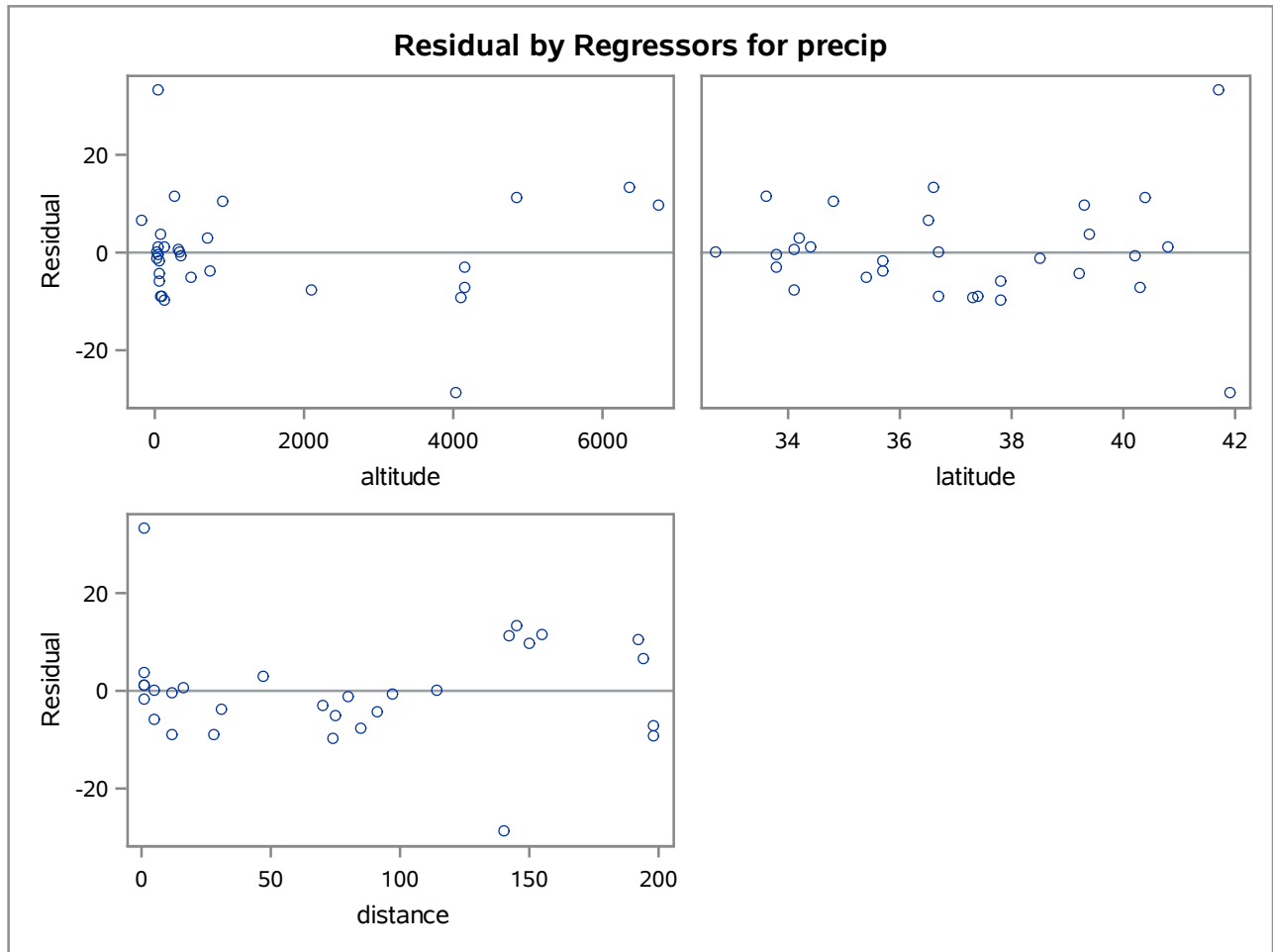
Sum of Residuals	0
Sum of Squared Residuals	3202.29762
Predicted Residual SS (PRESS)	4862.75577

The REG Procedure
Model: MODEL1

Fit Diagnostics for precip



The REG Procedure
Model: MODEL1



The REG Procedure
Model: MODEL1
Dependent Variable: precip

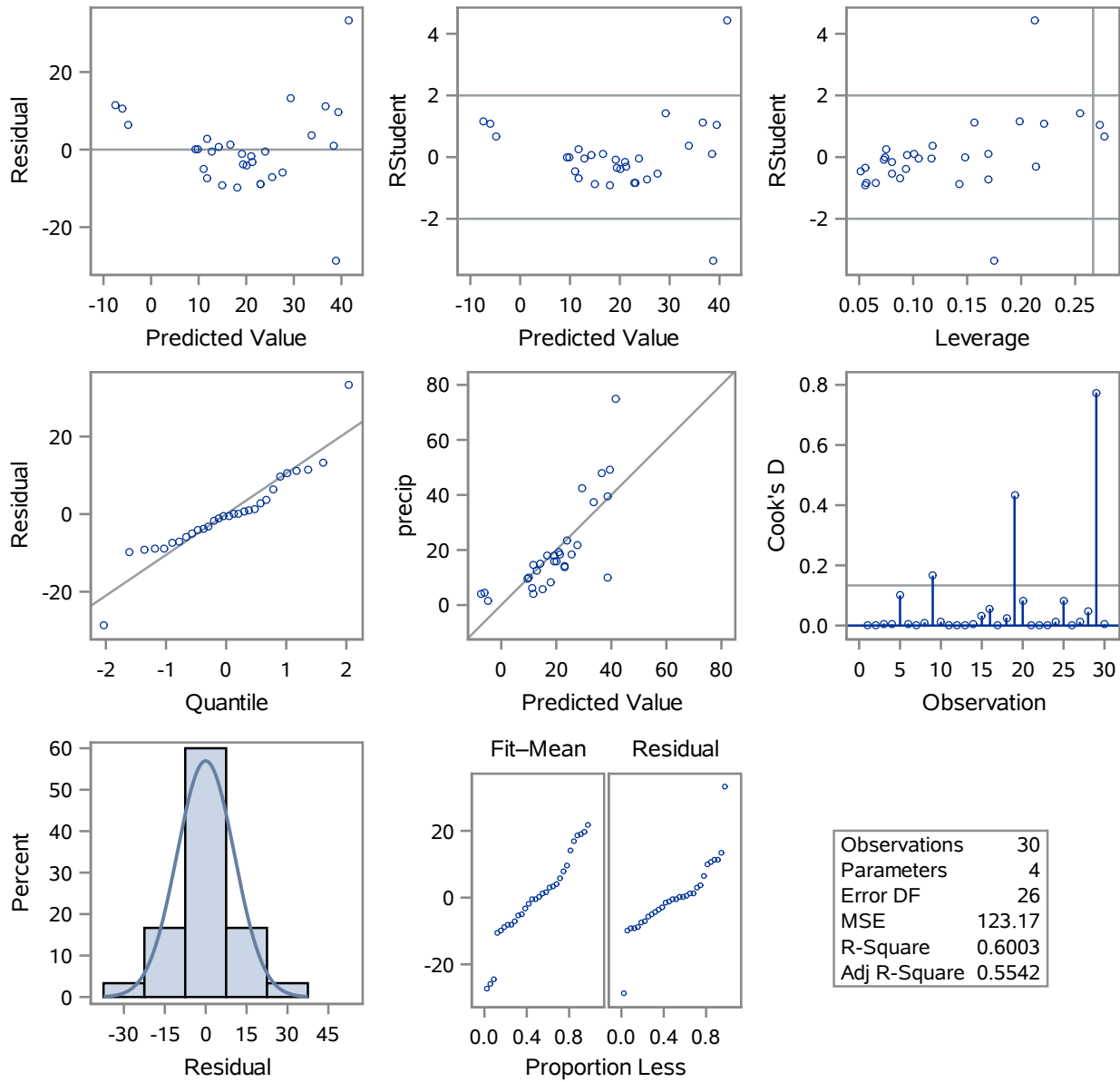
R-Square Selection Method

Number of Observations Read	31
Number of Observations Used	30
Number of Observations with Missing Values	1

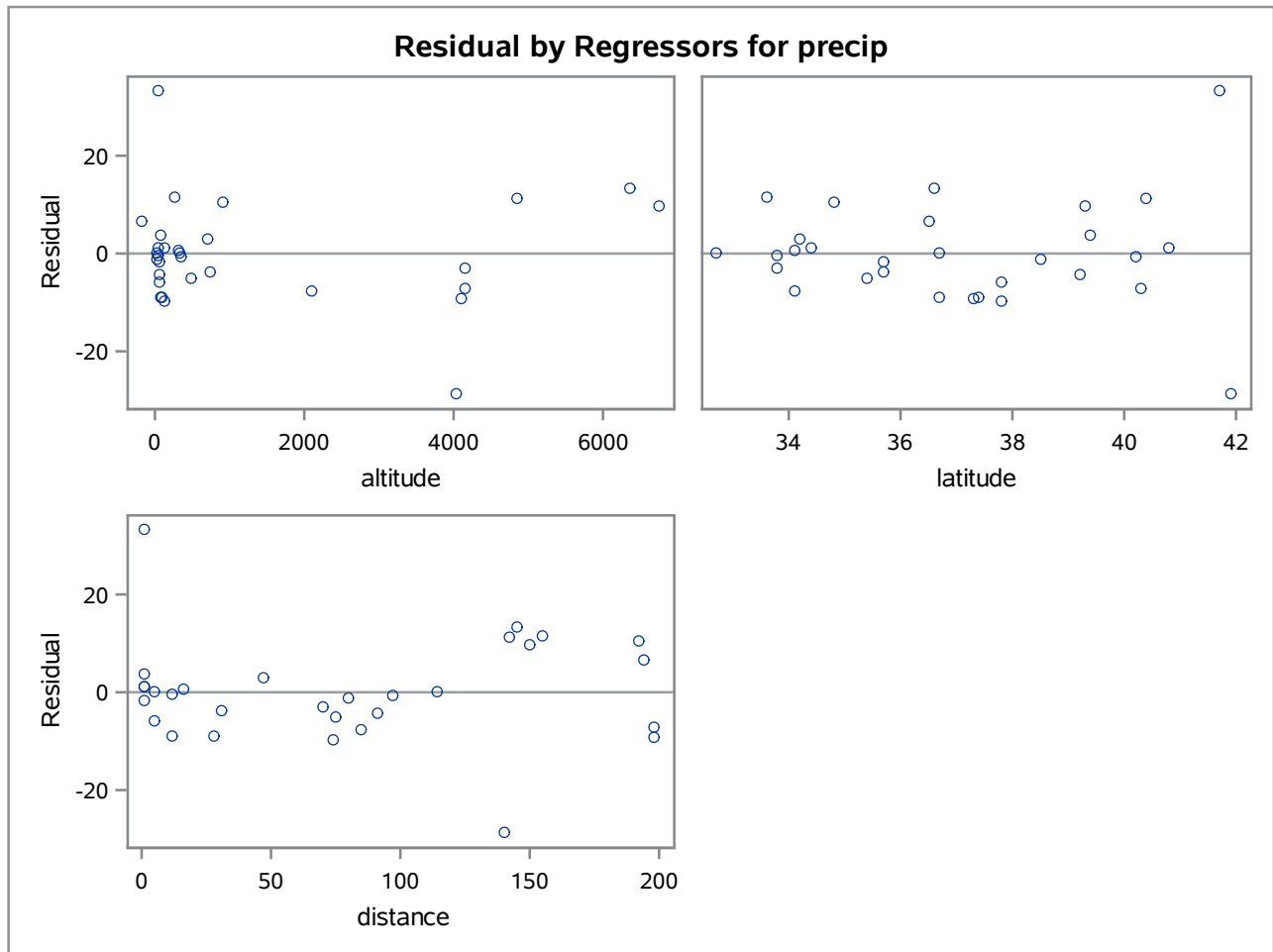
Number in Model	R-Square	Adjusted R-Square	C(p)	Variables in Model
1	0.3326	0.3088	17.4113	latitude
1	0.0912	0.0588	33.1151	altitude
1	0.0441	0.0100	36.1766	distance
2	0.4270	0.3845	13.2730	latitude distance
2	0.3627	0.3155	17.4538	altitude latitude
2	0.3105	0.2594	20.8506	altitude distance
3	0.6003	0.5542	4.0000	altitude latitude distance

The REG Procedure
 Model: MODEL1
 Dependent Variable: precip

Fit Diagnostics for precip



The REG Procedure
Model: MODEL1
Dependent Variable: precip



The STEPWISE Procedure
Model: MODEL1
Dependent Variable: precip

Number of Observations Read	31
Number of Observations Used	30
Number of Observations with Missing Values	1

Forward Selection: Step 1

Variable latitude Entered: R-Square = 0.3326 and C(p) = 17.4113

Analysis of Variance					
Source	DF	Sum of Squares	Mean Square	F Value	Pr > F
Model	1	2664.88744	2664.88744	13.96	0.0008
Error	28	5346.76615	190.95593		
Corrected Total	29	8011.65359			

Variable	Parameter Estimate	Standard Error	Type II SS	F Value	Pr > F
Intercept	-113.30280	35.72105	1921.17113	10.06	0.0037
latitude	3.59498	0.96233	2664.88744	13.96	0.0008

Bounds on condition number: 1, 1

Forward Selection: Step 2

Variable distance Entered: R-Square = 0.4270 and C(p) = 13.2730

Analysis of Variance					
Source	DF	Sum of Squares	Mean Square	F Value	Pr > F
Model	2	3420.91094	1710.45547	10.06	0.0005
Error	27	4590.74265	170.02751		
Corrected Total	29	8011.65359			

Variable	Parameter Estimate	Standard Error	Type II SS	F Value	Pr > F
Intercept	-119.01984	33.81564	2106.31205	12.39	0.0016
latitude	3.90806	0.92012	3067.26106	18.04	0.0002
distance	-0.07465	0.03540	756.02350	4.45	0.0444

Bounds on condition number: 1.0267, 4.1069

The STEPWISE Procedure
Model: MODEL1
Dependent Variable: precip

Forward Selection: Step 3

Variable altitude Entered: R-Square = 0.6003 and C(p) = 4.0000

Analysis of Variance					
Source	DF	Sum of Squares	Mean Square	F Value	Pr > F
Model	3	4809.35596	1603.11865	13.02	<.0001
Error	26	3202.29762	123.16529		
Corrected Total	29	8011.65359			

Variable	Parameter Estimate	Standard Error	Type II SS	F Value	Pr > F
Intercept	-102.35743	29.20548	1512.85859	12.28	0.0017
altitude	0.00409	0.00122	1388.44503	11.27	0.0024
latitude	3.45108	0.79486	2321.74030	18.85	0.0002
distance	-0.14286	0.03634	1903.37755	15.45	0.0006

Bounds on condition number: 1.5364, 12.263

All variables have been entered into the model.

Summary of Forward Selection							
Step	Variable Entered	Number Vars In	Partial R-Square	Model R-Square	C(p)	F Value	Pr > F
1	latitude	1	0.3326	0.3326	17.4113	13.96	0.0008
2	distance	2	0.0944	0.4270	13.2730	4.45	0.0444
3	altitude	3	0.1733	0.6003	4.0000	11.27	0.0024

The STEPWISE Procedure
Model: MODEL1
Dependent Variable: precip

Number of Observations Read	31
Number of Observations Used	30
Number of Observations with Missing Values	1

Backward Elimination: Step 0

All Variables Entered: R-Square = 0.6003 and C(p) = 4.0000

Analysis of Variance					
Source	DF	Sum of Squares	Mean Square	F Value	Pr > F
Model	3	4809.35596	1603.11865	13.02	<.0001
Error	26	3202.29762	123.16529		
Corrected Total	29	8011.65359			

Variable	Parameter Estimate	Standard Error	Type II SS	F Value	Pr > F
Intercept	-102.35743	29.20548	1512.85859	12.28	0.0017
altitude	0.00409	0.00122	1388.44503	11.27	0.0024
latitude	3.45108	0.79486	2321.74030	18.85	0.0002
distance	-0.14286	0.03634	1903.37755	15.45	0.0006

Bounds on condition number: 1.5364, 12.263

All variables left in the model are significant at the 0.1000 level.

The STEPWISE Procedure
Model: MODEL1
Dependent Variable: precip

Number of Observations Read	31
Number of Observations Used	30
Number of Observations with Missing Values	1

Stepwise Selection: Step 1

Variable latitude Entered: R-Square = 0.3326 and C(p) = 17.4113

Analysis of Variance					
Source	DF	Sum of Squares	Mean Square	F Value	Pr > F
Model	1	2664.88744	2664.88744	13.96	0.0008
Error	28	5346.76615	190.95593		
Corrected Total	29	8011.65359			

Variable	Parameter Estimate	Standard Error	Type II SS	F Value	Pr > F
Intercept	-113.30280	35.72105	1921.17113	10.06	0.0037
latitude	3.59498	0.96233	2664.88744	13.96	0.0008

Bounds on condition number: 1, 1

Stepwise Selection: Step 2

Variable distance Entered: R-Square = 0.4270 and C(p) = 13.2730

Analysis of Variance					
Source	DF	Sum of Squares	Mean Square	F Value	Pr > F
Model	2	3420.91094	1710.45547	10.06	0.0005
Error	27	4590.74265	170.02751		
Corrected Total	29	8011.65359			

Variable	Parameter Estimate	Standard Error	Type II SS	F Value	Pr > F
Intercept	-119.01984	33.81564	2106.31205	12.39	0.0016
latitude	3.90806	0.92012	3067.26106	18.04	0.0002
distance	-0.07465	0.03540	756.02350	4.45	0.0444

Bounds on condition number: 1.0267, 4.1069

The STEPWISE Procedure
Model: MODEL1
Dependent Variable: precip

Stepwise Selection: Step 3

Variable altitude Entered: R-Square = 0.6003 and C(p) = 4.0000

Analysis of Variance					
Source	DF	Sum of Squares	Mean Square	F Value	Pr > F
Model	3	4809.35596	1603.11865	13.02	<.0001
Error	26	3202.29762	123.16529		
Corrected Total	29	8011.65359			

Variable	Parameter Estimate	Standard Error	Type II SS	F Value	Pr > F
Intercept	-102.35743	29.20548	1512.85859	12.28	0.0017
altitude	0.00409	0.00122	1388.44503	11.27	0.0024
latitude	3.45108	0.79486	2321.74030	18.85	0.0002
distance	-0.14286	0.03634	1903.37755	15.45	0.0006

Bounds on condition number: 1.5364, 12.263

All variables left in the model are significant at the 0.1500 level.

All variables have been entered into the model.

Summary of Stepwise Selection								
Step	Variable Entered	Variable Removed	Number Vars In	Partial R-Square	Model R-Square	C(p)	F Value	Pr > F
1	latitude		1	0.3326	0.3326	17.4113	13.96	0.0008
2	distance		2	0.0944	0.4270	13.2730	4.45	0.0444
3	altitude		3	0.1733	0.6003	4.0000	11.27	0.0024