

The GLM Procedure

Class Level Information		
Class	Levels	Values
VARIETY	4	1 2 3 4

Number of Observations Read	16
Number of Observations Used	16

The GLM Procedure

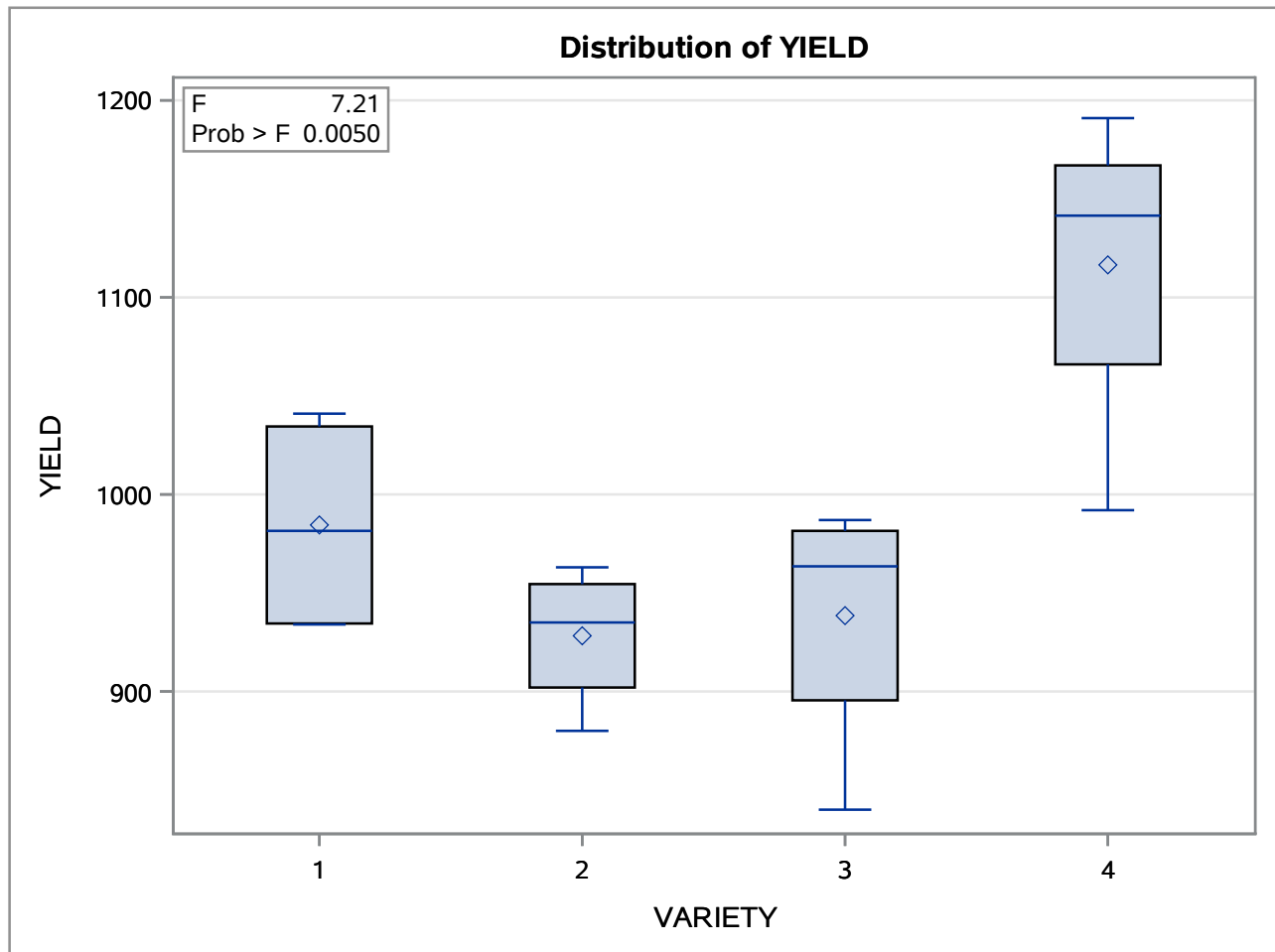
Dependent Variable: YIELD

Source	DF	Sum of Squares	Mean Square	F Value	Pr > F
Model	3	89931.1875	29977.0625	7.21	0.0050
Error	12	49875.7500	4156.3125		
Corrected Total	15	139806.9375			

R-Square	Coeff Var	Root MSE	YIELD Mean
0.643253	6.499348	64.46947	991.9375

Source	DF	Type I SS	Mean Square	F Value	Pr > F
VARIETY	3	89931.18750	29977.06250	7.21	0.0050

Source	DF	Type III SS	Mean Square	F Value	Pr > F
VARIETY	3	89931.18750	29977.06250	7.21	0.0050



The GLM Procedure

Class Level Information		
Class	Levels	Values
VARIETY	4	1 2 3 4

Number of Observations Read	16
Number of Observations Used	16

The GLM Procedure

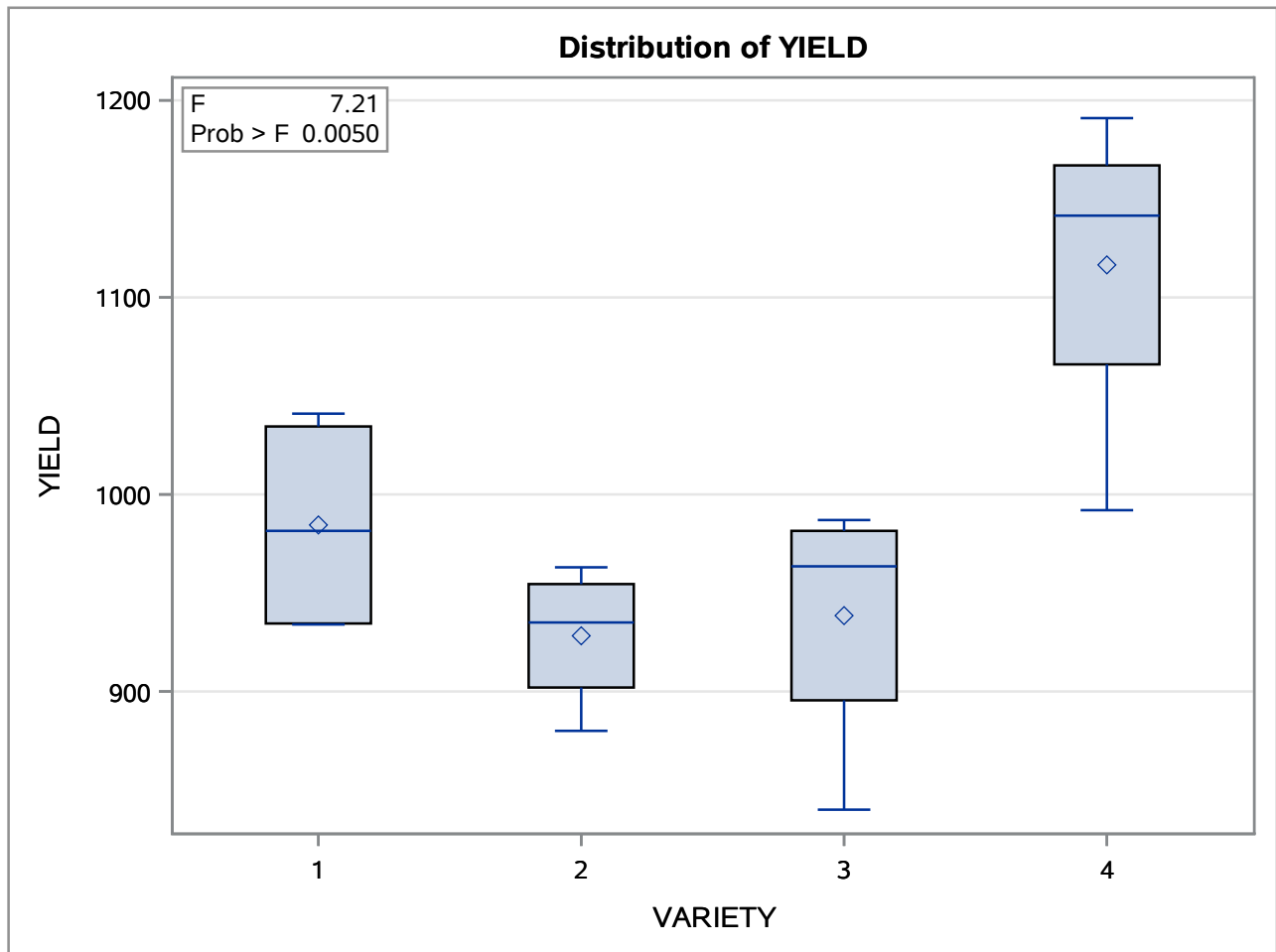
Dependent Variable: YIELD

Source	DF	Sum of Squares	Mean Square	F Value	Pr > F
Model	3	89931.1875	29977.0625	7.21	0.0050
Error	12	49875.7500	4156.3125		
Corrected Total	15	139806.9375			

R-Square	Coeff Var	Root MSE	YIELD Mean
0.643253	6.499348	64.46947	991.9375

Source	DF	Type I SS	Mean Square	F Value	Pr > F
VARIETY	3	89931.18750	29977.06250	7.21	0.0050

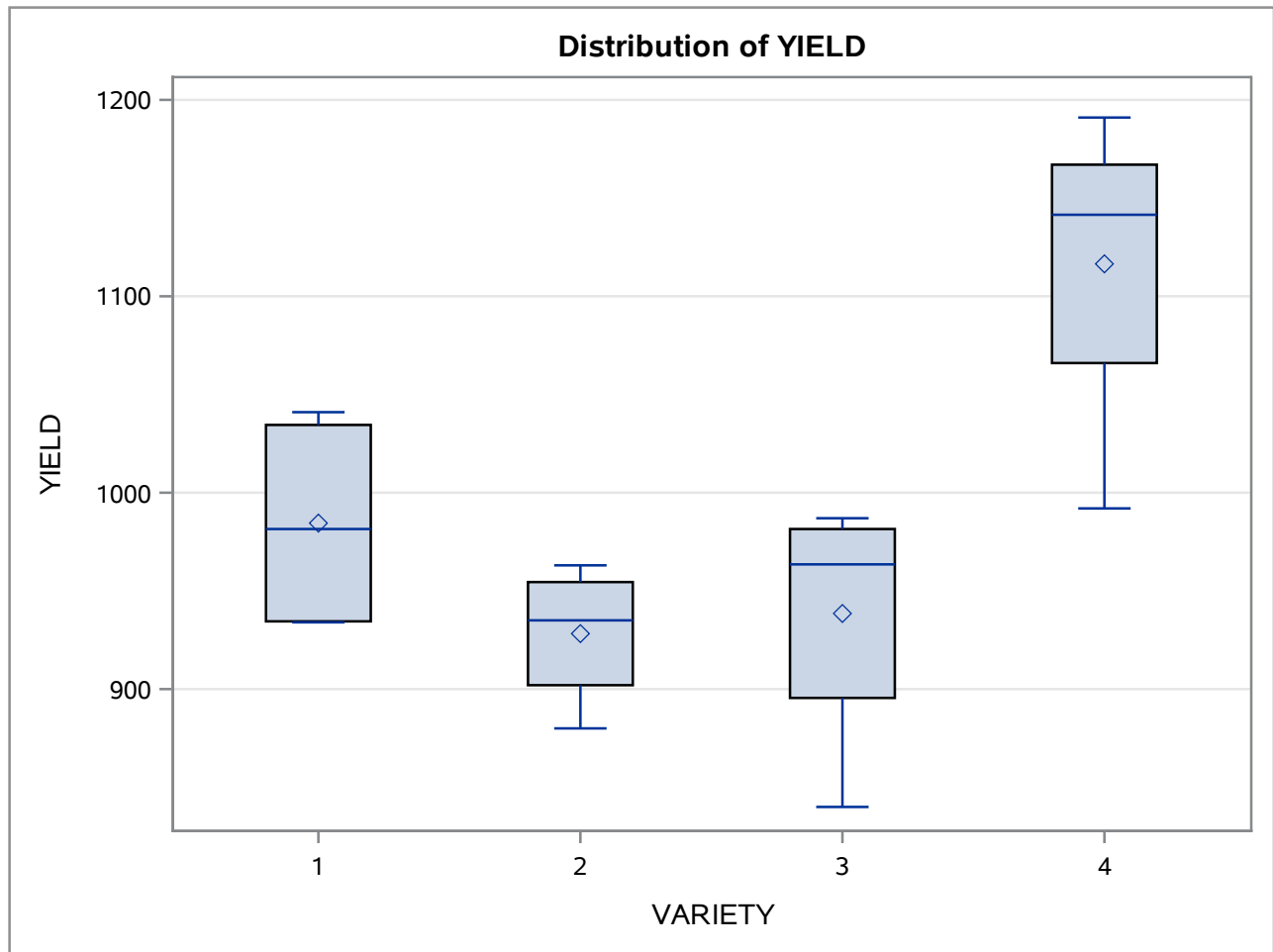
Source	DF	Type III SS	Mean Square	F Value	Pr > F
VARIETY	3	89931.18750	29977.06250	7.21	0.0050



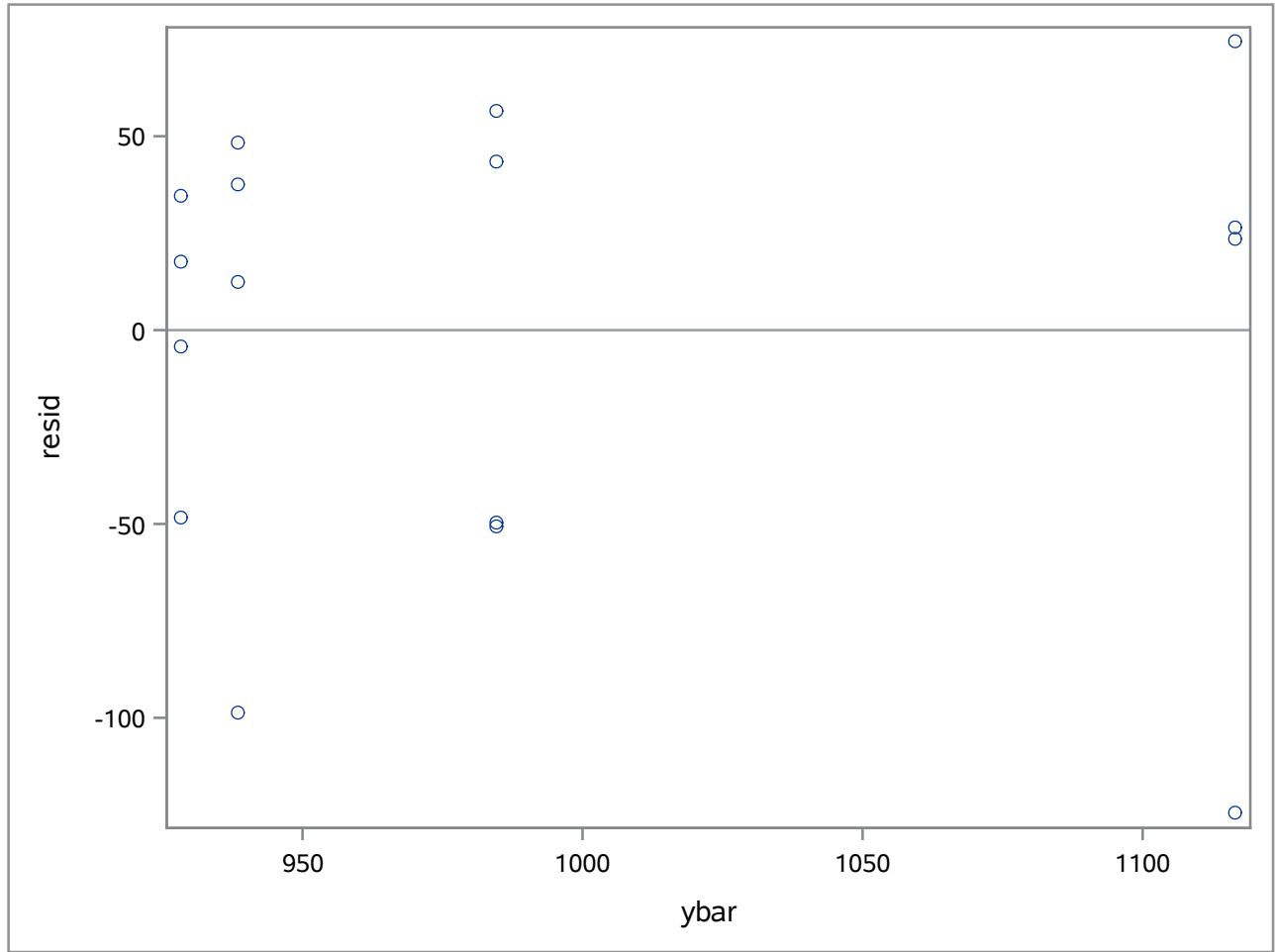
The GLM Procedure

Levene's Test for Homogeneity of YIELD Variance ANOVA of Absolute Deviations from Group Means					
Source	DF	Sum of Squares	Mean Square	F Value	Pr > F
VARIETY	3	2708.7	902.9	0.91	0.4654
Error	12	11917.0	993.1		

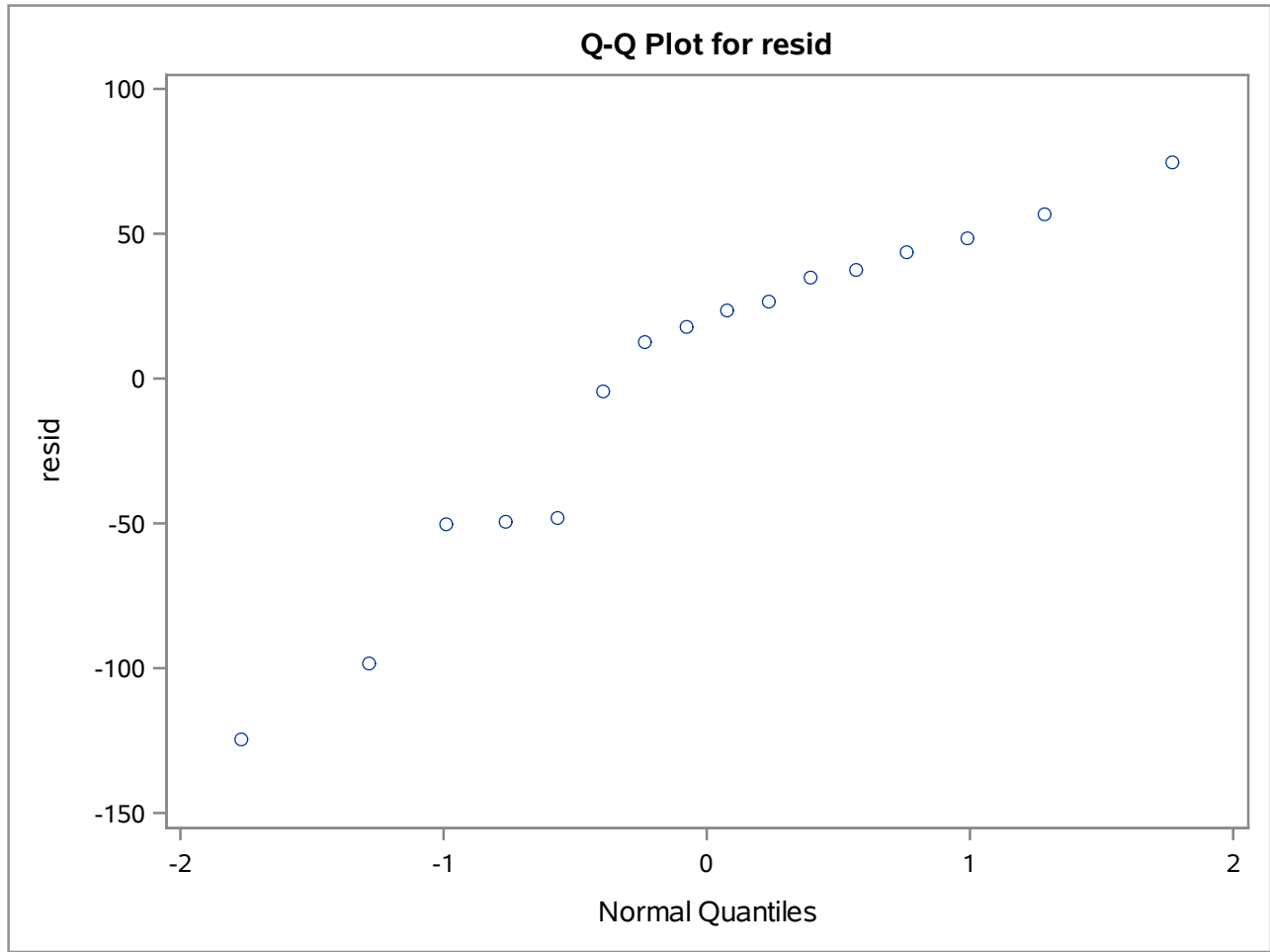
The GLM Procedure



Level of VARIETY	N	YIELD	
		Mean	Std Dev
1	4	984.50000	57.9798816
2	4	928.25000	35.9107690
3	4	938.50000	67.3721011
4	4	1116.50000	86.2264461



The UNIVARIATE Procedure



The GLM Procedure

Class Level Information		
Class	Levels	Values
VARIETY	4	1 2 3 4

Number of Observations Read	16
Number of Observations Used	16

The GLM Procedure

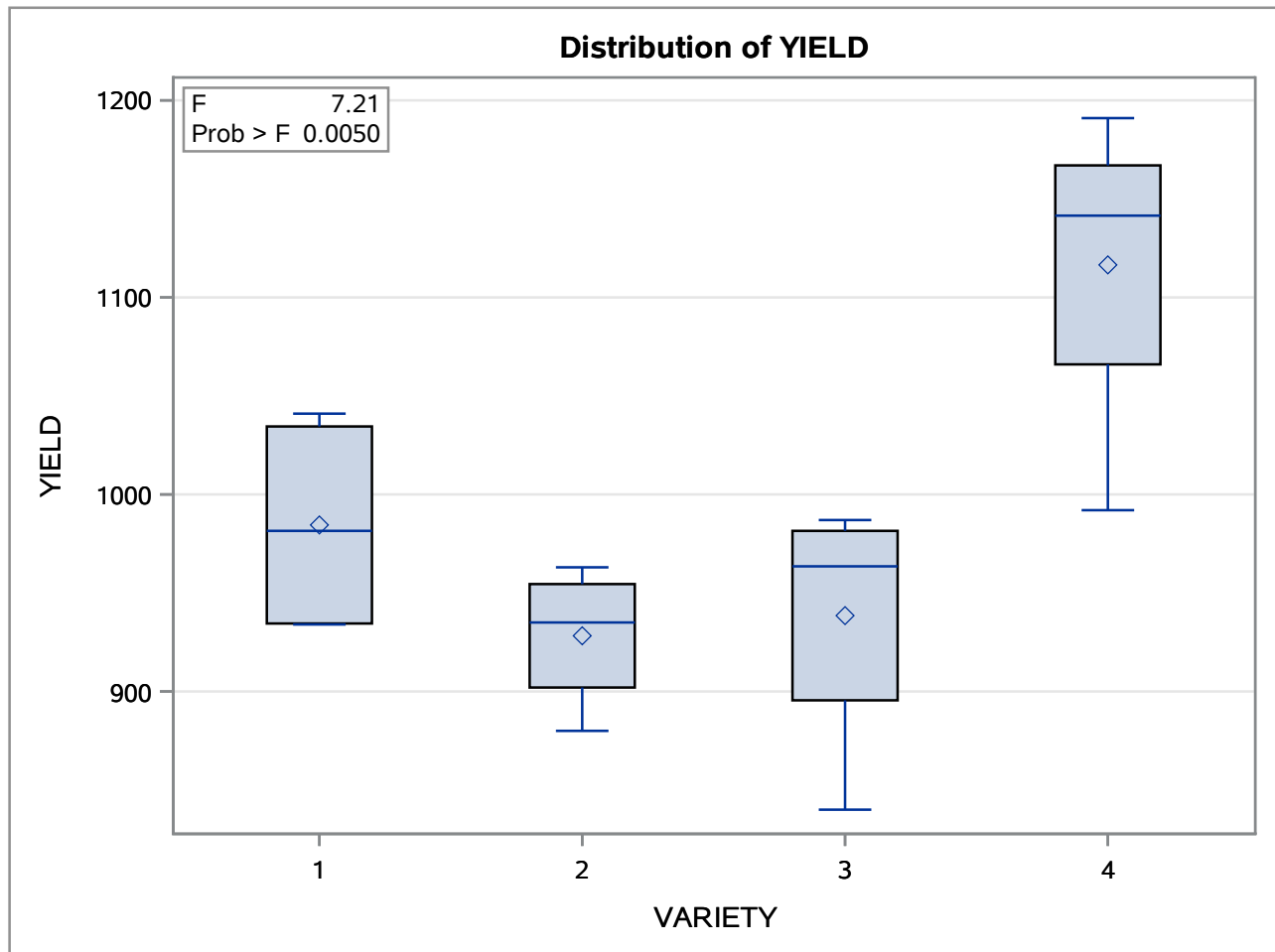
Dependent Variable: YIELD

Source	DF	Sum of Squares	Mean Square	F Value	Pr > F
Model	3	89931.1875	29977.0625	7.21	0.0050
Error	12	49875.7500	4156.3125		
Corrected Total	15	139806.9375			

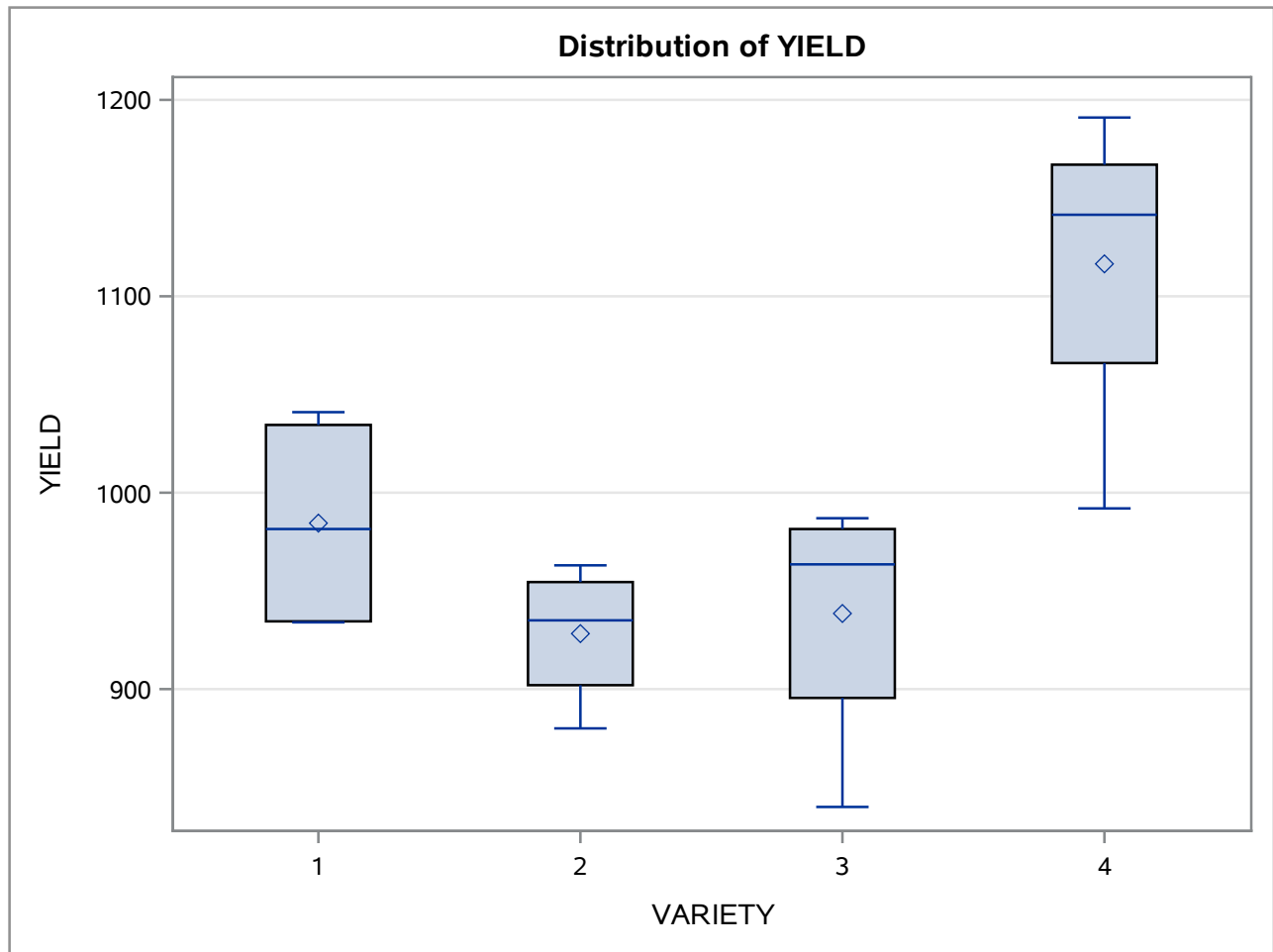
R-Square	Coeff Var	Root MSE	YIELD Mean
0.643253	6.499348	64.46947	991.9375

Source	DF	Type I SS	Mean Square	F Value	Pr > F
VARIETY	3	89931.18750	29977.06250	7.21	0.0050

Source	DF	Type III SS	Mean Square	F Value	Pr > F
VARIETY	3	89931.18750	29977.06250	7.21	0.0050



The GLM Procedure



Level of VARIETY	N	YIELD	
		Mean	Std Dev
1	4	984.50000	57.9798816
2	4	928.25000	35.9107690
3	4	938.50000	67.3721011
4	4	1116.50000	86.2264461

The GLM Procedure**Dependent Variable: YIELD**

Parameter	Estimate	Standard Error	t Value	Pr > t
Var4vsOthers	-166.083333	37.2214656	-4.46	0.0008
1vs2	56.250000	45.5867991	1.23	0.2409

The GLM Procedure

Class Level Information		
Class	Levels	Values
VARIETY	4	1 2 3 4

Number of Observations Read	16
Number of Observations Used	16

The GLM Procedure

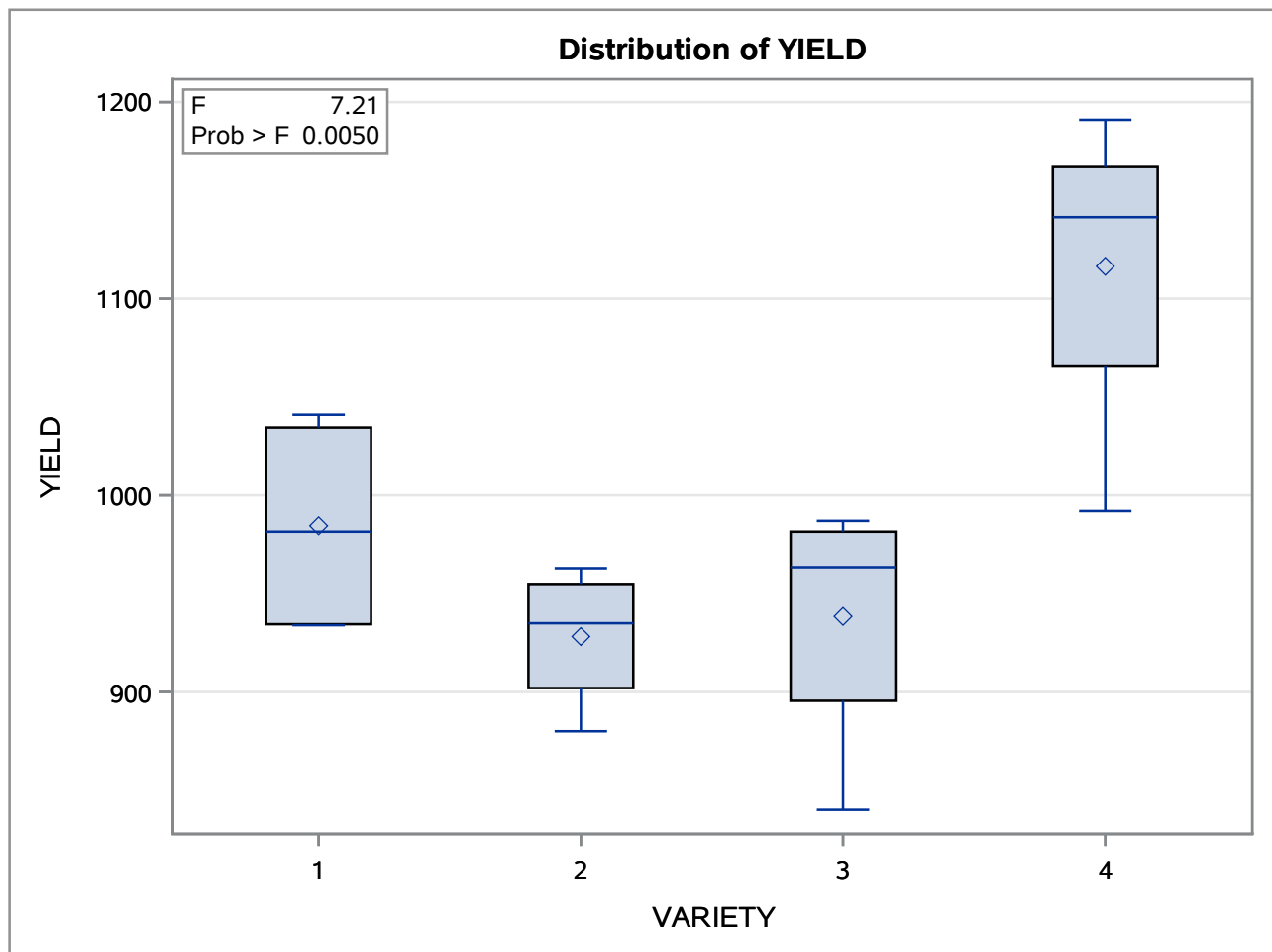
Dependent Variable: YIELD

Source	DF	Sum of Squares	Mean Square	F Value	Pr > F
Model	3	89931.1875	29977.0625	7.21	0.0050
Error	12	49875.7500	4156.3125		
Corrected Total	15	139806.9375			

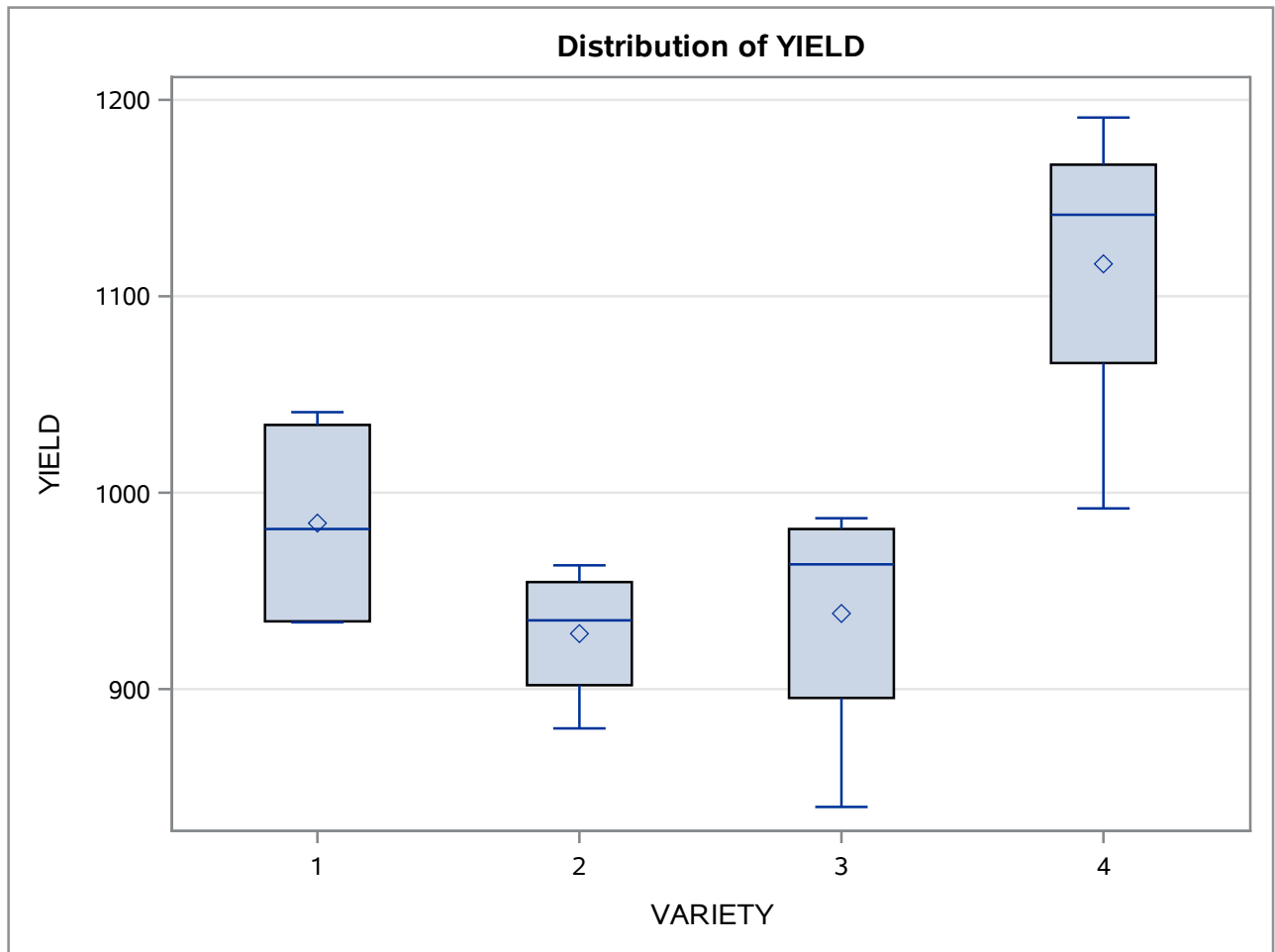
R-Square	Coeff Var	Root MSE	YIELD Mean
0.643253	6.499348	64.46947	991.9375

Source	DF	Type I SS	Mean Square	F Value	Pr > F
VARIETY	3	89931.18750	29977.06250	7.21	0.0050

Source	DF	Type III SS	Mean Square	F Value	Pr > F
VARIETY	3	89931.18750	29977.06250	7.21	0.0050



The GLM Procedure



The GLM Procedure

t Tests (LSD) for YIELD

Note: This test controls the Type I comparisonwise error rate, not the experimentwise error rate.

Alpha	0.05
Error Degrees of Freedom	12
Error Mean Square	4156.313
Critical Value of t	2.17881
Least Significant Difference	99.325

Means with the same letter are not significantly different.			
t Grouping	Mean	N	VARIETY
A	1116.50	4	4
B	984.50	4	1
B			
B	938.50	4	3
B			
B	928.25	4	2

The GLM Procedure

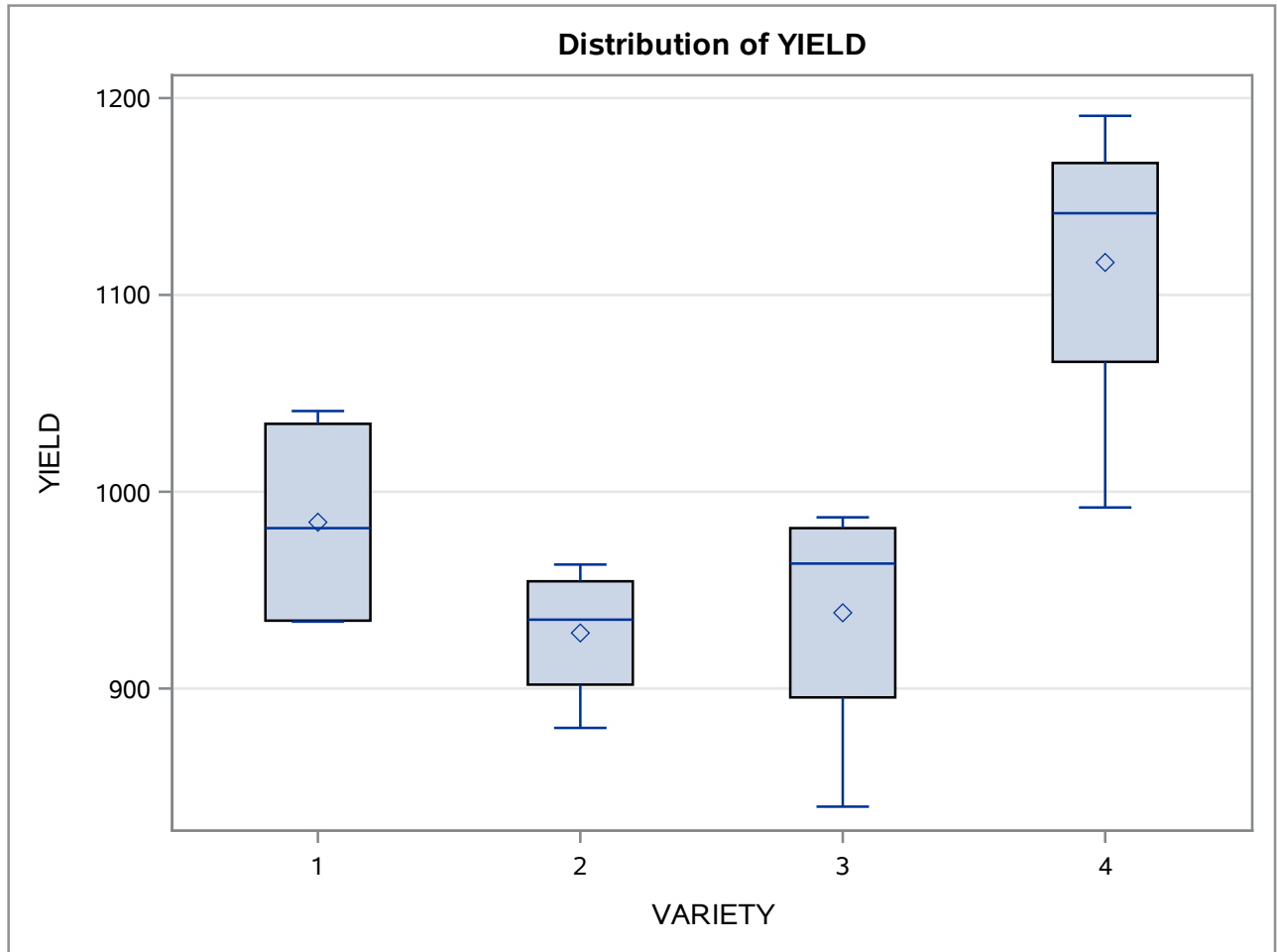
Tukey's Studentized Range (HSD) Test for YIELD

Note: This test controls the Type I experimentwise error rate, but it generally has a higher Type II error rate than REGWQ.

Alpha	0.05
Error Degrees of Freedom	12
Error Mean Square	4156.313
Critical Value of Studentized Range	4.19851
Minimum Significant Difference	135.34

Means with the same letter are not significantly different.				
Tukey Grouping		Mean	N	VARIETY
	A	1116.50	4	4
	A			
B	A	984.50	4	1
B				
B		938.50	4	3
B				
B		928.25	4	2

The GLM Procedure



The GLM Procedure

t Tests (LSD) for YIELD

Note: This test controls the Type I comparisonwise error rate, not the experimentwise error rate.

Alpha	0.05
Error Degrees of Freedom	12
Error Mean Square	4156.313
Critical Value of t	2.17881
Least Significant Difference	99.325

Comparisons significant at the 0.05 level are indicated by ***.				
VARIETY Comparison	Difference Between Means	95% Confidence Limits		
4 - 1	132.00	32.67	231.33	***
4 - 3	178.00	78.67	277.33	***
4 - 2	188.25	88.92	287.58	***
1 - 4	-132.00	-231.33	-32.67	***
1 - 3	46.00	-53.33	145.33	
1 - 2	56.25	-43.08	155.58	
3 - 4	-178.00	-277.33	-78.67	***
3 - 1	-46.00	-145.33	53.33	
3 - 2	10.25	-89.08	109.58	
2 - 4	-188.25	-287.58	-88.92	***
2 - 1	-56.25	-155.58	43.08	
2 - 3	-10.25	-109.58	89.08	

The GLM Procedure

Tukey's Studentized Range (HSD) Test for YIELD

Note: This test controls the Type I experimentwise error rate.

Alpha	0.05
Error Degrees of Freedom	12
Error Mean Square	4156.313
Critical Value of Studentized Range	4.19851
Minimum Significant Difference	135.34

Comparisons significant at the 0.05 level are indicated by ***.				
VARIETY Comparison	Difference Between Means	Simultaneous 95% Confidence Limits		
4 - 1	132.00	-3.34	267.34	
4 - 3	178.00	42.66	313.34	***
4 - 2	188.25	52.91	323.59	***
1 - 4	-132.00	-267.34	3.34	
1 - 3	46.00	-89.34	181.34	
1 - 2	56.25	-79.09	191.59	
3 - 4	-178.00	-313.34	-42.66	***
3 - 1	-46.00	-181.34	89.34	
3 - 2	10.25	-125.09	145.59	
2 - 4	-188.25	-323.59	-52.91	***
2 - 1	-56.25	-191.59	79.09	
2 - 3	-10.25	-145.59	125.09	

The GLM Procedure

Class Level Information		
Class	Levels	Values
VARIETY	4	1 2 3 4

Number of Observations Read	16
Number of Observations Used	16

The GLM Procedure

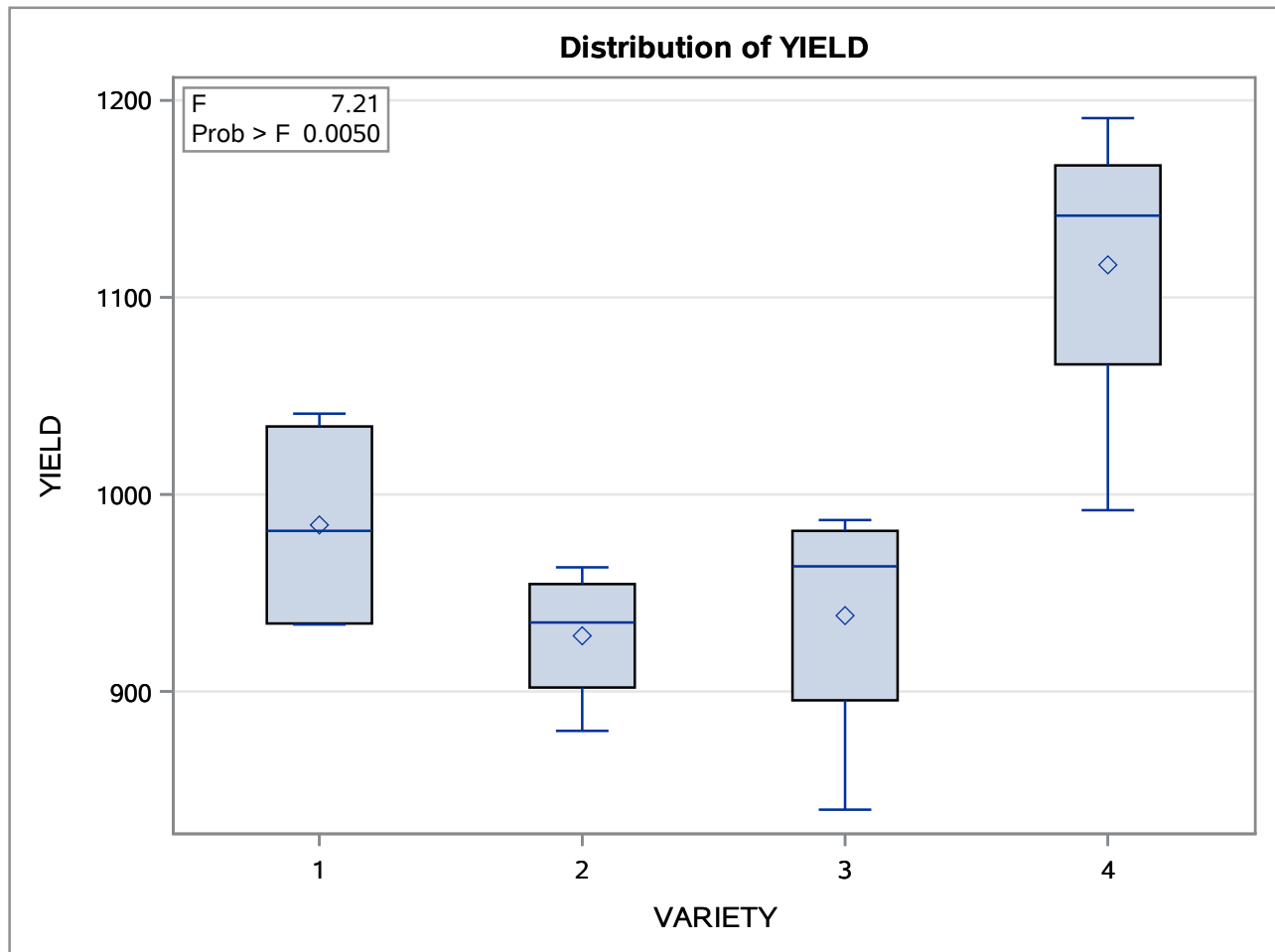
Dependent Variable: YIELD

Source	DF	Sum of Squares	Mean Square	F Value	Pr > F
Model	3	89931.1875	29977.0625	7.21	0.0050
Error	12	49875.7500	4156.3125		
Corrected Total	15	139806.9375			

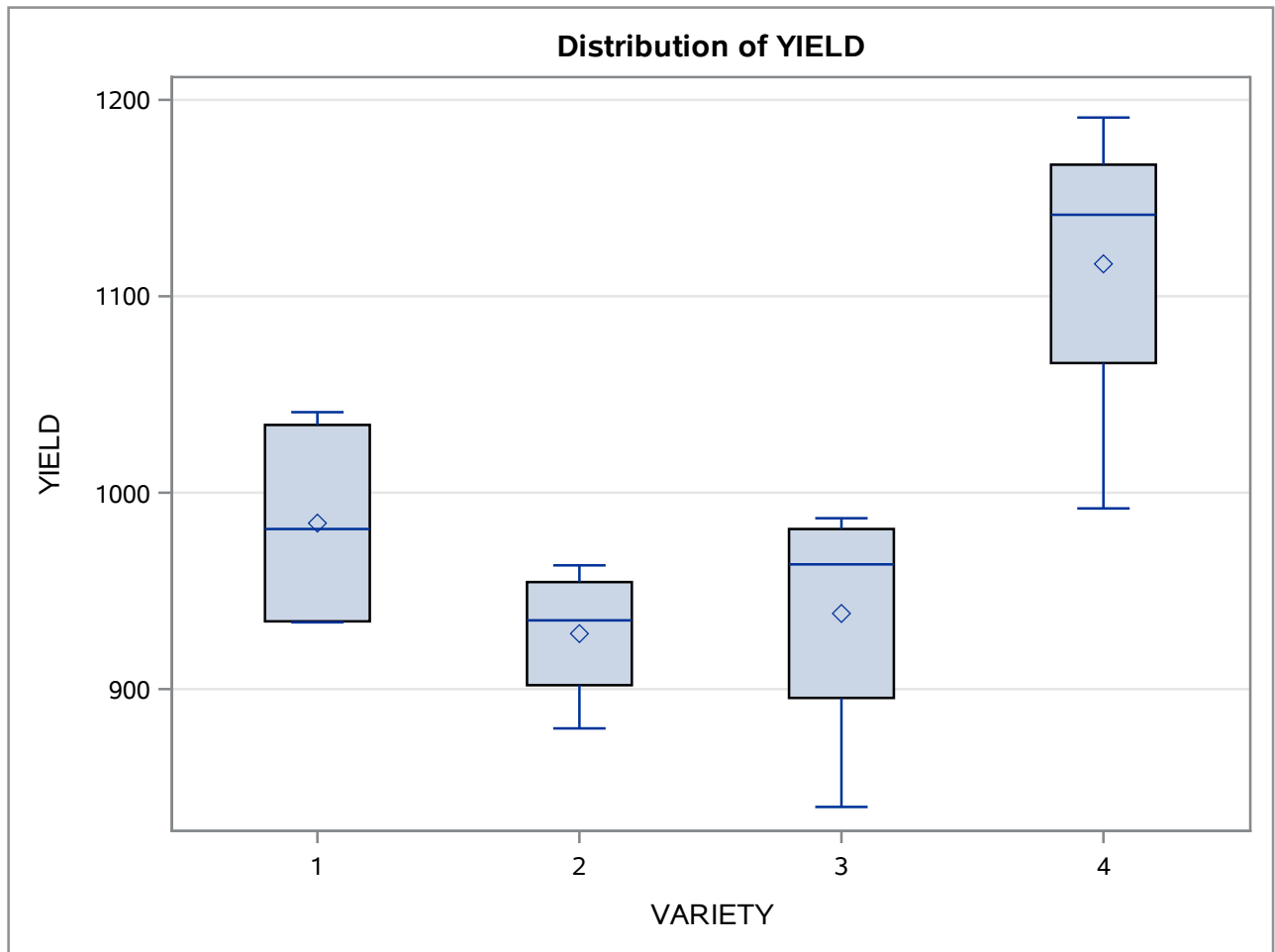
R-Square	Coeff Var	Root MSE	YIELD Mean
0.643253	6.499348	64.46947	991.9375

Source	DF	Type I SS	Mean Square	F Value	Pr > F
VARIETY	3	89931.18750	29977.06250	7.21	0.0050

Source	DF	Type III SS	Mean Square	F Value	Pr > F
VARIETY	3	89931.18750	29977.06250	7.21	0.0050



The GLM Procedure



The GLM Procedure

Tukey's Studentized Range (HSD) Test for YIELD

Note: This test controls the Type I experimentwise error rate.

Alpha	0.05
Error Degrees of Freedom	12
Error Mean Square	4156.313
Critical Value of Studentized Range	4.19851
Minimum Significant Difference	135.34

Comparisons significant at the 0.05 level are indicated by ***.				
VARIETY Comparison	Difference Between Means	Simultaneous 95% Confidence Limits		
4 - 1	132.00	-3.34	267.34	
4 - 3	178.00	42.66	313.34	***
4 - 2	188.25	52.91	323.59	***
1 - 4	-132.00	-267.34	3.34	
1 - 3	46.00	-89.34	181.34	
1 - 2	56.25	-79.09	191.59	
3 - 4	-178.00	-313.34	-42.66	***
3 - 1	-46.00	-181.34	89.34	
3 - 2	10.25	-125.09	145.59	
2 - 4	-188.25	-323.59	-52.91	***
2 - 1	-56.25	-191.59	79.09	
2 - 3	-10.25	-145.59	125.09	

The GLM Procedure

Class Level Information		
Class	Levels	Values
VARIETY	4	1 2 3 4

Number of Observations Read	16
Number of Observations Used	16

The GLM Procedure

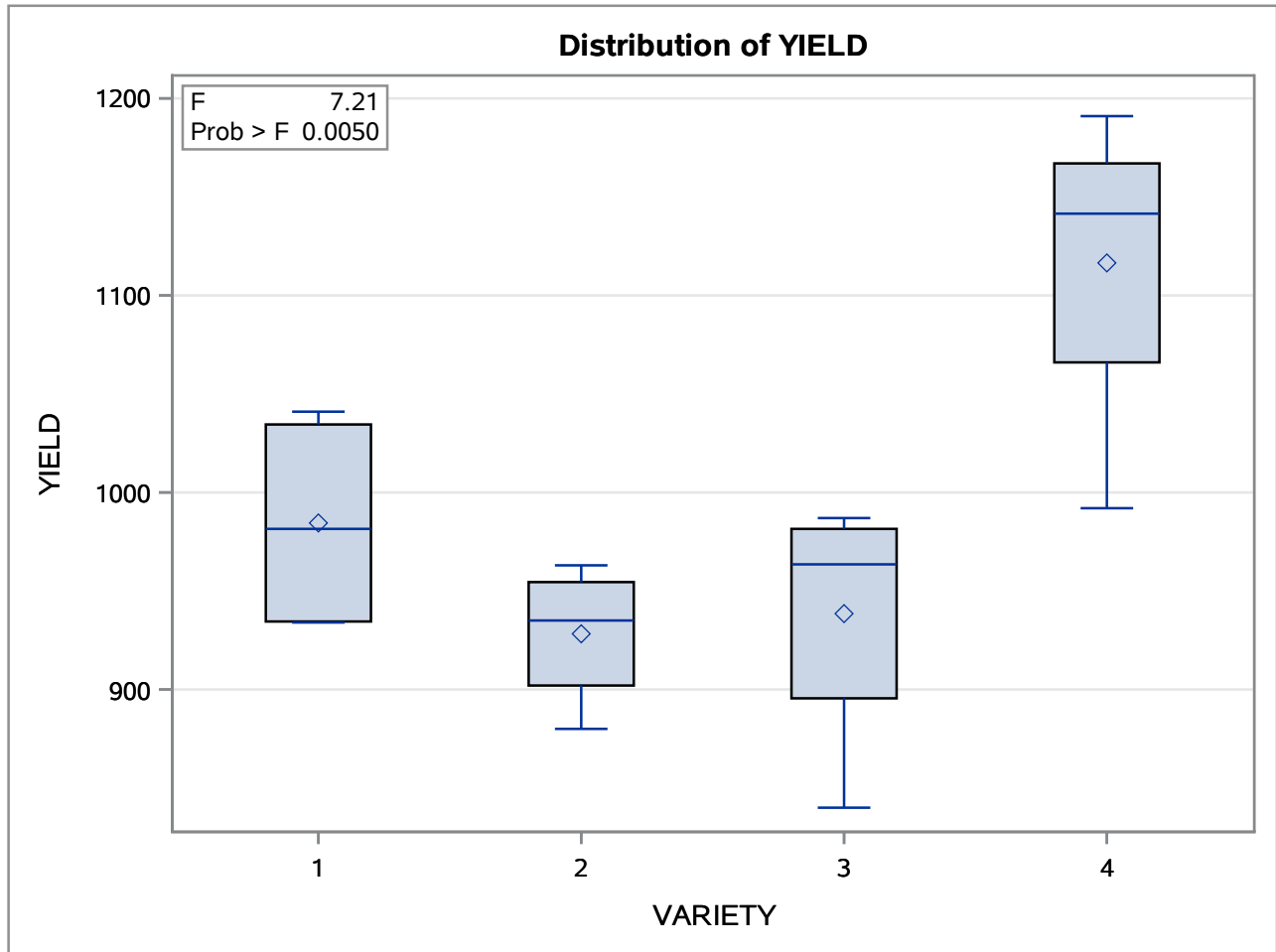
Dependent Variable: YIELD

Source	DF	Sum of Squares	Mean Square	F Value	Pr > F
Model	3	89931.1875	29977.0625	7.21	0.0050
Error	12	49875.7500	4156.3125		
Corrected Total	15	139806.9375			

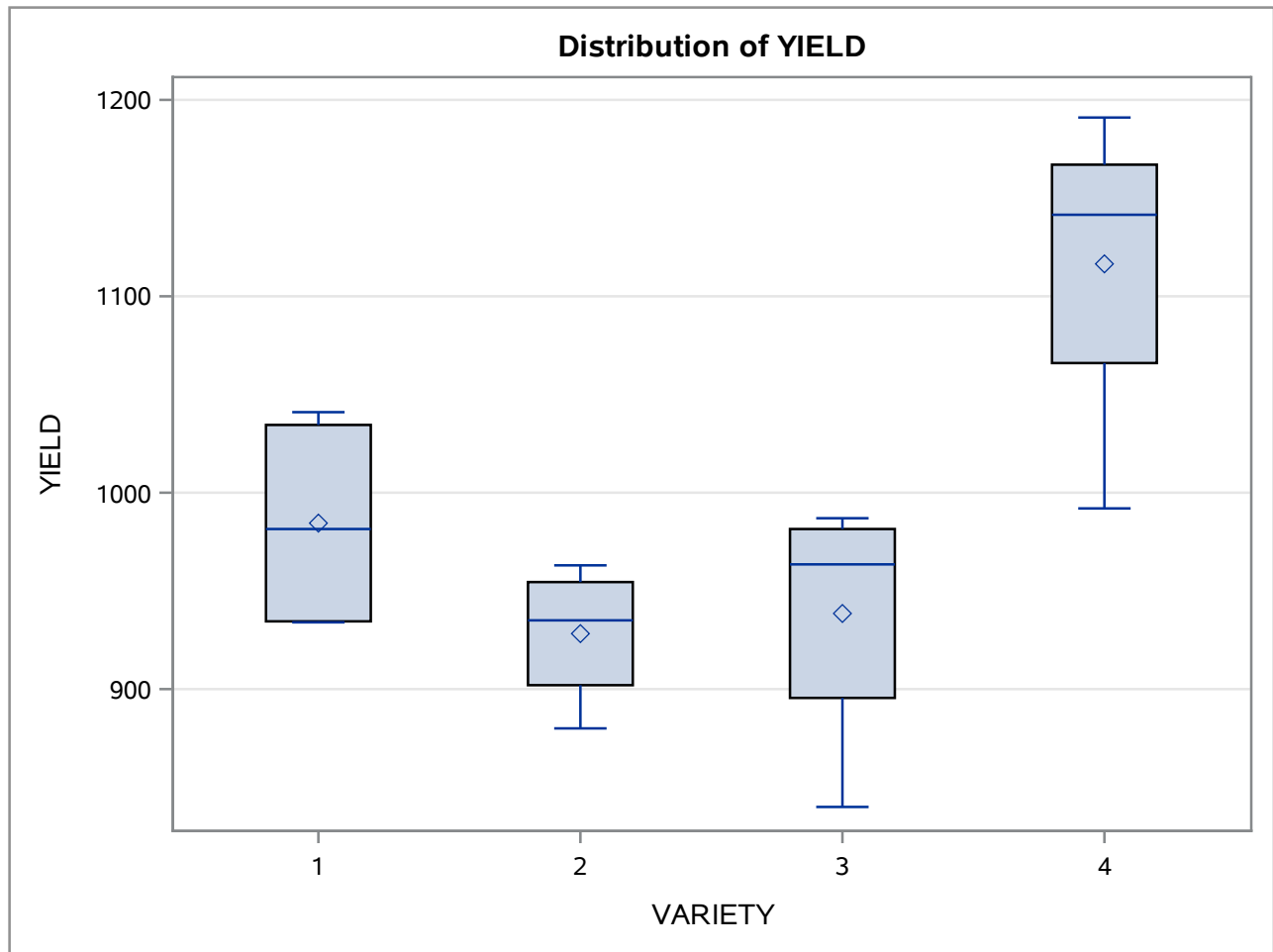
R-Square	Coeff Var	Root MSE	YIELD Mean
0.643253	6.499348	64.46947	991.9375

Source	DF	Type I SS	Mean Square	F Value	Pr > F
VARIETY	3	89931.18750	29977.06250	7.21	0.0050

Source	DF	Type III SS	Mean Square	F Value	Pr > F
VARIETY	3	89931.18750	29977.06250	7.21	0.0050



The GLM Procedure



Level of VARIETY	N	YIELD	
		Mean	Std Dev
1	4	984.50000	57.9798816
2	4	928.25000	35.9107690
3	4	938.50000	67.3721011
4	4	1116.50000	86.2264461

The GLM Procedure**Dependent Variable: YIELD**

Parameter	Estimate	Standard Error	t Value	Pr > t
Var4 vs Others	-166.083333	37.2214656	-4.46	0.0008
1 vs 2	56.250000	45.5867991	1.23	0.2409