

### The LOGISTIC Procedure

Model Information	
Data Set	WORK.CITYDATA
Response Variable	TIF
Number of Response Levels	2
Model	binary logit
Optimization Technique	Fisher's scoring

Number of Observations Read	50
Number of Observations Used	50

Response Profile		
Ordered Value	TIF	Total Frequency
1	1	24
2	0	26

Probability modeled is TIF='1'.

Model Convergence Status
Convergence criterion (GCONV=1E-8) satisfied.

Model Fit Statistics		
Criterion	Intercept Only	Intercept and Covariates
AIC	71.235	57.666
SC	73.147	61.490
-2 Log L	69.235	53.666

Testing Global Null Hypothesis: BETA=0			
Test	Chi-Square	DF	Pr > ChiSq
Likelihood Ratio	15.5687	1	<.0001
Score	14.1810	1	0.0002
Wald	11.5013	1	0.0007

Analysis of Maximum Likelihood Estimates					
Parameter	DF	Estimate	Standard Error	Wald Chi-Square	Pr > ChiSq
Intercept	1	-11.3472	3.3511	11.4660	0.0007
income	1	1.0018	0.2954	11.5013	0.0007

### The LOGISTIC Procedure

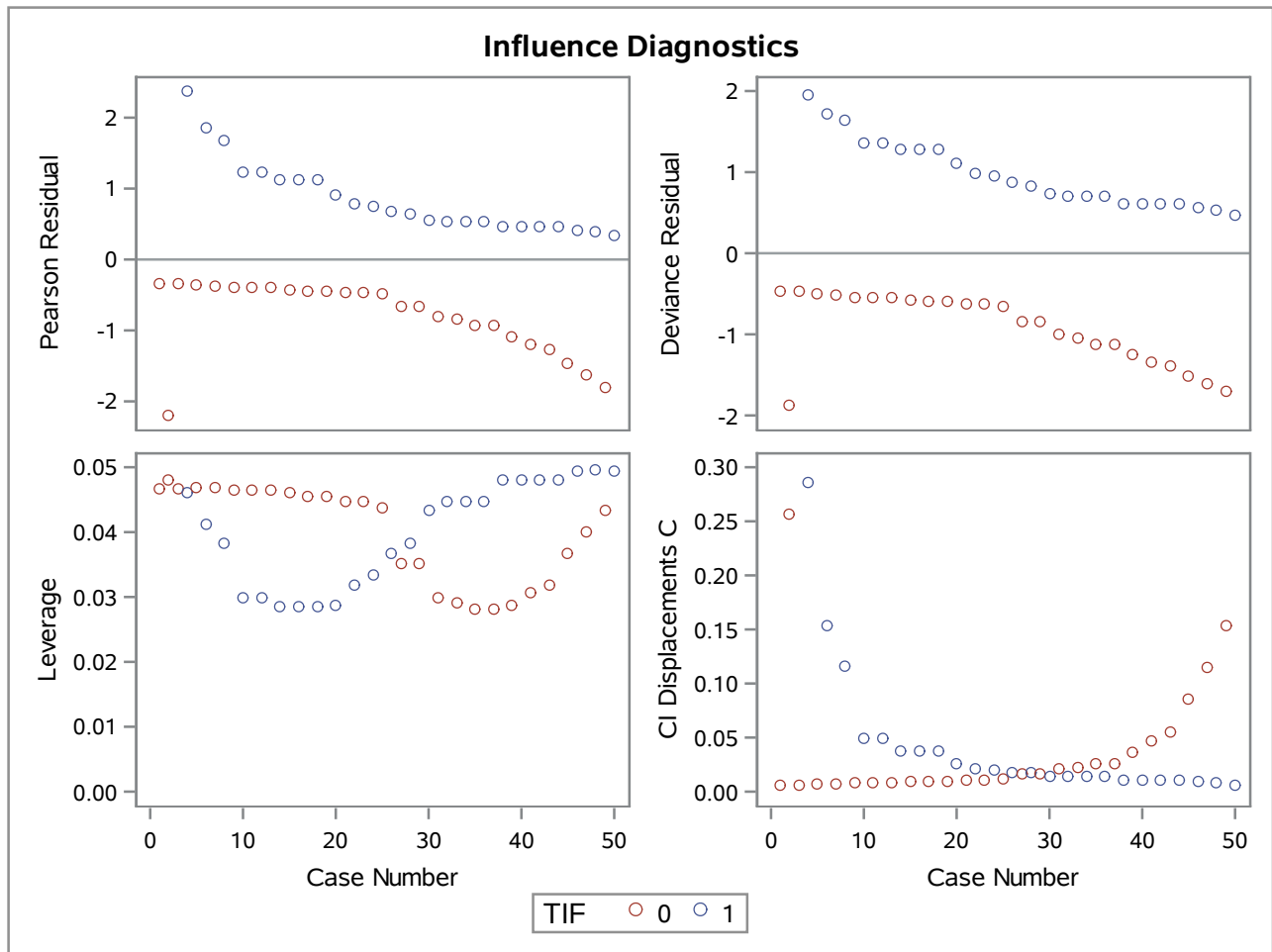
Odds Ratio Estimates			
Effect	Point Estimate	95% Wald Confidence Limits	
income	2.723	1.526	4.858

Association of Predicted Probabilities and Observed Responses			
Percent Concordant	79.8	Somers' D	0.614
Percent Discordant	18.4	Gamma	0.625
Percent Tied	1.8	Tau-a	0.313
Pairs	624	c	0.807

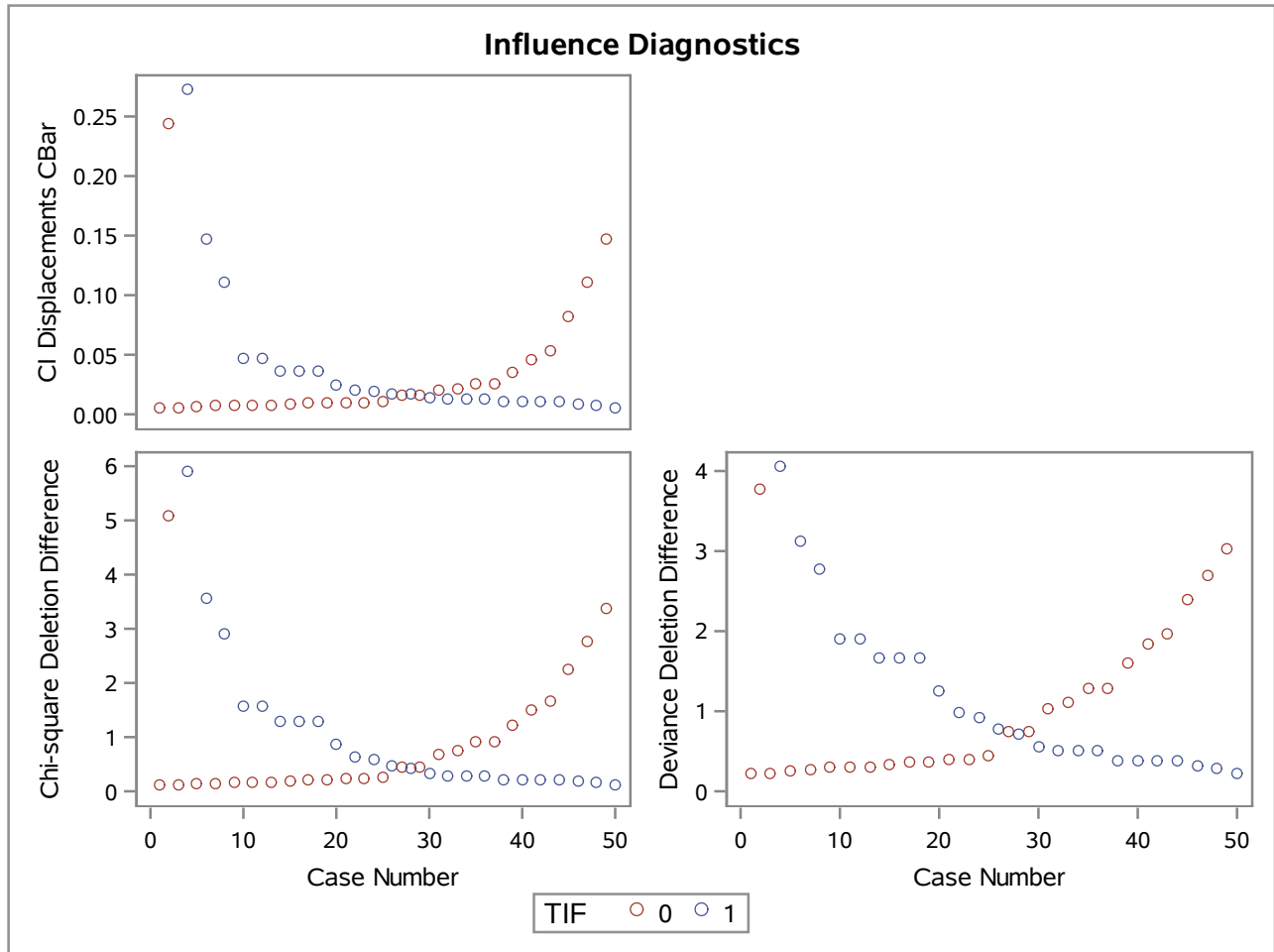
Partition for the Hosmer and Lemeshow Test					
Group	Total	TIF = 1		TIF = 0	
		Observed	Expected	Observed	Expected
1	7	0	0.87	7	6.13
2	6	1	0.98	5	5.02
3	5	2	1.29	3	3.71
4	7	5	2.93	2	4.07
5	5	1	2.61	4	2.39
6	5	3	3.24	2	1.76
7	7	5	5.30	2	1.70
8	5	4	4.14	1	0.86
9	3	3	2.62	0	0.38

Hosmer and Lemeshow Goodness-of-Fit Test		
Chi-Square	DF	Pr > ChiSq
6.7043	7	0.4603

### The LOGISTIC Procedure



The LOGISTIC Procedure



### The LOGISTIC Procedure

